

1993 ANNUAL REPORT

CENTRE FOR SOCIAL AND DEVELOPMENT STUDIES



**The University of Natal rejects apartheid.
It is an equal opportunities,
affirmative action University.**

1993 ANNUAL REPORT

CENTRE FOR SOCIAL AND DEVELOPMENT STUDIES

**The University of Natal rejects apartheid.
It is an equal opportunities,
affirmative action University.**

ADDRESS

The postal address of the Centre is:

CENTRE FOR SOCIAL AND DEVELOPMENT STUDIES,
UNIVERSITY OF NATAL
KING GEORGE V AVENUE
DURBAN 4001
SOUTH AFRICA

TELEGRAPHIC ADDRESS: 'UNIVERSITY, DURBAN'

TELEX: 6-20177 SA

FAX: (031) 260 2359

TELEPHONE: (031) 260 2361

HOW TO ORDER PUBLICATIONS

Orders, addressed to the Librarian, should cite author, year, and short title. Please send cheque (made out to the University of Natal and including VAT) with order.

INDICATOR SA PUBLICATIONS

All orders for Indicator SA publications should be made directly to the Indicator Project SA at the above address (Tel: 031 - 2602526). Reprints of single articles are not available but single back issues may be purchased. Subscription information, a catalogue and an index are available on request.

CONTENTS

		PAGE
1	INTRODUCTION	1
2	STAFF	2
3	ACTIVITIES OF THE CENTRE	4
4	STRUCTURE OF THE CENTRE	7
5	OVERVIEW OF STAFF ACTIVITIES IN 1993	8
6	URBAN FORUM SEMINARS	15
7	JILL NATTRASS VISITING FELLOW SEMINARS	16
8	VISITORS TO THE CENTRE	16
9	STAFF PUBLICATIONS 1993	19

INTRODUCTION

CSDS continued with its highly relevant development research during 1993. The outstanding feature of this work is that staff were increasingly drawn into a number of new development forums and programmes during the year. These new networking and communication roles were largely committed to the empowerment of disadvantaged groups and to capacity building.

As is common in a Centre like ours, we bade farewell to a number of colleagues and welcomed a number of new faces. Graham Howe, Charlene Nel, Maureen Nene, Bonge Nxumalo and Aki Stavrou left us during the year. Special mention of Aki and Graham should be made: they were two of CSDS's oldest members and will be sorely missed. We welcomed Karen MacGregor and Roseline Ntshingila-Khosa, and, for a short period during the year, Roy Ainslee and Geoff Schreiner.

I was in France on study leave during the first six months of the year and would like to thank Valerie Møller for acting on my behalf during this period.

Our productivity may be assessed by perusing this report. We have also decided to produce a glossy CSDS Profile early in 1994 to communicate more effectively with interested members of the public. We look forward to 1994 as a year which will bring about important changes not only to our country and region, but also to our University and Centre.

SIMON BEKKER
DIRECTOR

Administrative Staff

Administrative Officer

L Anderson

Administrative Officer

M C N Wells

Computer Technician

R M Devey MSc (Natal)

Senior Admin Assistant

M Smith BA (Natal)

Admin Assistant

J Ngcobo

Admin Assistant - RUSU

S Klipp

Trainee Admin Assistant Maurice Webb

M Nene

Clerical Assistant

M Mtshali

Indicator SA Project

Manager and Editor

G W Howe BA (Hons) (Cape Town)

Production Designer

R J Evans BSocSc (Hons) (Cape Town)

MSocSc (Natal)

Executive Secretary

P E Fisser

Marketing Assistant

C Nel

Trainee Journalist **B Nxumalo BSocSc (Hons) (Durban-Westville)**

Jill Natrass Visiting Fellows

Period: 25.01.93 **J Manyoni BA (Unisa) D Phil (Oxford)**

15.03.93 **L Manicom BSocSci (Hons) (Natal) MA**
(Toronto)

15.08.93 **G Williams BA (Stellenbosch) D Phil (Oxford)**

3 **ACTIVITIES OF THE CENTRE**

The Centre for Social and Development Studies, as an integral part of the University of Natal and committed to its mission statement, sees its role:

- 1 to be a catalyst in the process of socio-economic and political transition through the delivery of academically sound basic and comparative research (together with graduate supervision and teaching on an individual basis) for policy makers, actors and the intellectual community involved in reconstruction in South Africa and the Natal region;

- 2 to promote affirmative action in terms of race and gender through the training and qualification of researchers.

The Centre for Social and Development Studies is engaged in multi-disciplinary research at the University of Natal. The activities of the Centre encompass the following:

3.1 A Research Centre

In 1988 the University of Natal's Centre for Applied Social Sciences and Development Studies Unit were formally integrated into the **Centre for Social and Development Studies**. The Centre for Applied Social Sciences (the Institute for Social Research until the end of 1975) had been operating since 1954, and the Development Studies Unit was established as a research unit within the Centre for Applied Social Sciences in 1982. Until 1988 both sections operated autonomously in the Social Science Faculty.

The Centre for Social and Development Studies (CSDS) combines the expertise and resources of both sections in its operations. The Centre's main activity is in the field of basic and applied research

with a strong emphasis on social development of a society in transition. The Centre provides training for social researchers. Studies are undertaken by individual members of staff and by research teams under the supervision of the Director and other senior members of staff.

3.2 A Communication and Publication Service for the General Public

The work previously produced by the two sections, which make up the Centre for Social and Development Studies, is widely known. Over the past decade more than 350 titles covering numerous topical issues in South African society have been made available to the public for purchase. Publications series include research reports, working papers, fact papers, monographs and occasional papers, conference proceedings, and journal articles.

3.3 A Resource Centre

The Centre also operates as a Resource Centre through its extensive library to provide socio-economic and other data, particularly on the Natal/KwaZulu region for interested sectors outside the University.

3.4 Currently the Centre for Social and Development Studies encompasses three specialist units:

The **Indicator Project South Africa**, established in 1982, publishes the quarterly journal INDICATOR SA, a monitor of social change and development in Southern Africa, and Indicator SA Issue Focuses on major socio-political issues.

The **Maurice Webb Race Relations Unit**, which was formed in 1984, carries out socio-political research and educational programmes.

The **Rural-Urban Studies Unit**, a unit initiated in 1983, concentrates on development studies in the Natal/KwaZulu region.

Staff in the Centre for Social and Development Studies comprise a Director and 5 establishment academic posts, a variable number of contract research fellows and assistants who are employed to work on specific projects, and administrative staff.

In addition the Centre offers a visiting Fellowship in honour of the late Professor Jill Nattrass. The post is awarded to local and foreign academics to enable them to pursue research at the Centre for periods of up to six months.

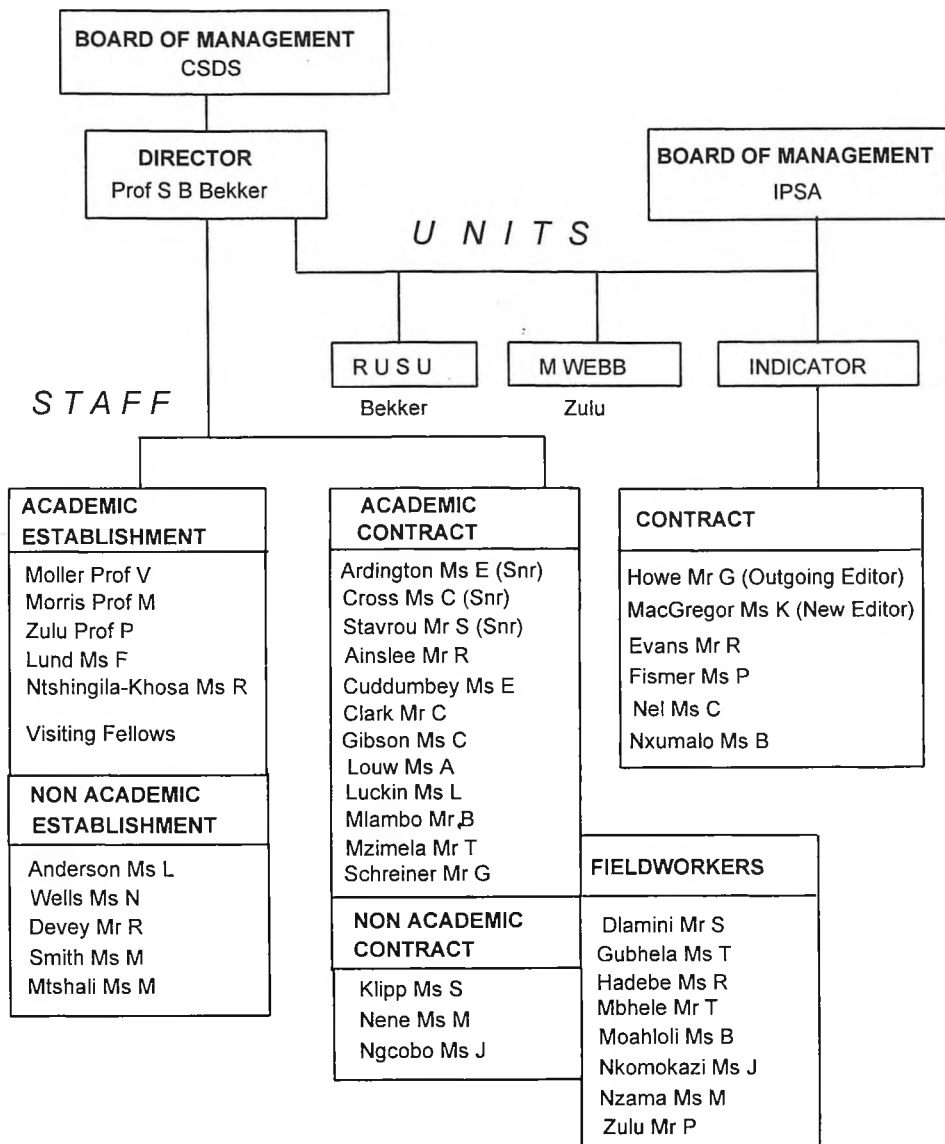
A Board of Management was established for the Centre during 1989, after the Centre left the Faculty of Social Science. The Board of Management which is chaired by the Vice-Chancellor or his nominee includes the heads of all departments in the Faculty of Social Science, some departmental heads from other Faculties, directors of other research units, and three non-university members elected by CSDS. The Board's first chairperson is Professor Cresswell.

3.5 Finance

The Centre is an integral part of the University of Natal and is financed in the same manner as other University departments.

Funds for undertaking research, for the purchase of research equipment and the employment of contract research staff are raised by individual staff members.

4 STRUCTURE OF CSDS: STAFF AND UNITS 1993



Visiting Research Fellows 1993:

Professor J Manyoni, Linzi Manicom,
Gavin Williams

5 OVERVIEW OF STAFF ACTIVITIES IN 1993

As a multidisciplinary research organisation, CSDS undertakes research on a wide range of issues.

Education

CSDS staff members have been involved in a wide range of research investigations into education and educational reform. Libby Ardington was a key contributor in the field of rural education at the Rural Education Forum Consultative Conference on rural/farm schools. The outcome of Valerie Møller's intensive three generational household study was a report outlining the influence of the home environment on educational motivation and achievement among township youth. Roseline Ntshingila-Khosa is engaged in an investigation into the patterns and norms of classroom interaction based on a case study of 22 classrooms in Soweto. Paulus Zulu has been involved in both preschool educational research in the DFR as well as in co-ordinating an education report for the Education Task Group of the HSRC Co-operative Youth Programme. His Education Support Programme, a Saturday school for Scholars in Standards 8,9 and 10 was attended by 1215 scholars from Durban schools every Saturday for the year.

Environmental Studies

Several research and development efforts concentrated on environmental issues. Simon Bekker contributed to the Environmental Impact Analysis into St Lucia land use proposals. Paulus Zulu, Themba Mzimela and Bonga Mlambo developed and carried out a unique rural communication programme of the Environmental Impact Analysis products for the CSIR. Catherine Cross and Leanne Luckin were contributors at the 50th

Anniversary Veldtrust conference with a presentation on institutions and environmental relations in South African rural communities. In 1994, the Rural Urban Studies Unit together with the Maurice Webb Race Relations Unit will begin a zonal study into policy options for more equitable access to natural resources and methods of sustainable resource management. This will form part of a national research programme which will focus on rural reconstruction.

*Environmenta
Studies*

Ethnicity emerged as a focal issue for CSDS in 1993. Simon Bekker conducted graduate seminars on the subject at l'Ecole des Hauts Etudes des Sciences Sociales, Paris, and presented a paper in Germany on Ethnicity and Change in South Africa. A special issue of Indicator SA which reported on the international conference in Grahamstown on Ethnicity and Identity, was published this year. In December 1993, Simon published a book entitled: *Ethnicity in focus: The South African case*, which reviews comparative and South works on the subject and is intended as an academic textbook. Bonga Mlambo, Themba Mzimela and Paulus Zulu have undertaken specific research into aspects of regional ethnic identity, particularly the dynamics within "Zulu" and "Xhosa" communities in the Natal and Transkei Regions.

*Ethnic
Studies*

Mike Morris and Aki Stavrou continued their work on infrastructural redistribution with particular emphasis on distribution of telephones and electrification of black urban and rural areas. Mike wrote on new developments and strategies in cellular telephony and published a paper on telecommunication needs and provision to underdeveloped black areas in South

*Infrastructure
& Service
Delivery*

*Infrastructure
& Service
Delivery*

Africa. Aki gave a conference paper on policy options for regulating the frequency spectrum and geo-stationary satellite orbit, and another on post-electrification research in four communities in KwaZulu. Both researchers participate in the national telecommunications forum set up to coordinate and formulate a national telecommunications strategy

*Land &
Land Reform*

In 1992, the World Bank prepared a Rural Restructuring Program (RRP) for South Africa. A number of South Africans were recruited through the Land and Agriculture Policy Centre to produce a series of background papers. Catherine Cross completed two background papers in 1993 and Visiting Research Fellow, Gavin Williams presented a critique of the RRP to the Land and Agriculture Policy Centre conference in October. Gavin also lectured extensively on the subject at universities throughout South Africa. Catherine was involved in the evaluation of the Development Bank's strategic perspective for the Durban Functional Region and submitted two papers, one on developing bylaws for land redistribution, and one on systems of transfer and succession under informal tenure in South Africa.

*Health &
Welfare*

Libby Ardington and Francie Lund are jointly undertaking secondary data analysis of Data Research Africa's 5 500 household income-expenditure survey in KwaZulu with a view to examining the role of welfare transfers in relieving poverty. Francie's book on caring for the elderly, a guide now in its second edition, was published this year, with supplements in Sotho, Tswana, Xhosa and Zulu. Libby conducted longitudinal surveys of the economy of a rural community in 1982, 1985 and 1993, which, among other issues, examines the role of pensions over time.

Antoinette Louw, together with her assistant, Eyvonne Cuddumbey, continued working on the Conflict Trends in Natal Project which was initiated in 1991. This project, which has monitored long-term trends in political conflict in Natal from 1986 to the present and created a unique computerised database, was reported on in a book published in January 1993 entitled: *Capturing the Event*. The spatial dimensions of the Natal conflict and the changing racial and class character of the Durban Functional Region were explored collaboratively by Mike Morris and members of the Institute for Social and Economic Research at the University of Durban-Westville, and published in a CSDS Working Paper as well as in a prestigious international journal. Paulus Zulu and Themba Mzimela are engaged in a project which monitors and analyses case studies of the Natal conflict at the community level, submitting reports on the crisis to policy actors such as the Goldstone Commission, National Peace Accord, United Nations and Commonwealth Peace Missions. Research investigations have been commissioned into the role of hostel residents and covert "third force" operations in the ongoing violence in black residential areas in the Natal/KwaZulu region culminating in a report by Paulus which was published as a book in early 1993 by the HSRC.

*Conflict
Studies*

During the past year CSDS made substantial contributions to collaborative research and development efforts related to marginalised groups in society. The longitudinal study of a rural community in the Nkandla District, (a socio-economic survey of 70 households which were previously surveyed in 1982

*Marginal
Groups*

*Marginal
Groups*

and 1985), was initiated by Libby Ardington. The intention is to analyse changes that have occurred especially in relation to the drought, recession, the repeal of influx legislation, the role of pensions and local government and access to the state.

Youth

Valerie Møller's three-generation household study in which she investigated the home environment and educational motivation and achievement, appeared in the first of a series of Reports prepared for the Co-operative Research Programme: South African Youth. She also published a book on the quality of life in unemployment, a survey evaluation of black township dwellers. In addition, Craig Clark and Catherine Cross undertook research in the role and social influence of the growing youth membership of the African Independent Churches (AICs) as part of its large study of this social movement in the DFR. And finally, Paulus Zulu coordinated the report for the education task group of HSRC Cooperative Youth Programme.

Ageing

Valerie Møller pursued her interests in research on ageing. Her investigation into intergenerational family relations and wellbeing in three-generation urban black households was published as an HSRC Discussion Paper within the framework of the Co-operative Research Programme on Ageing. She was also invited to edit a paper for publication in the influential international newsletter, *Ageing International*, a major achievement in terms of international networking efforts.

Evaluation

Centre staff are increasingly called upon to lead or participate in institutional as well as project evaluations. Francie Lund lead an evaluation of both The community Development Resource Association a

leading SA training NGO, as well as the Institute of Natural Resources. Roseline Ntshingila-Khosa participated in The Primary Science Project (NATAL) evaluation. Catherine Cross and Craig Clark are jointly evaluating the DBSA's Farmer Support Programme and Chris Gibson was an active member of the government's National Nutrition and Social Development Programme evaluation team. *Evaluation*

Academic citations of articles in *Indicator SA*, many of them written by CSDS staff, illustrated once again last year that the journal is an important source for scholarly reference and debate. Overseas subscriptions increased steadily, spreading the work of the Centre further afield.

Simon Bekker's book, *Ethnicity in focus: The South African case*, was published by *Indicator SA* in December and initial sales were brisk. For the first time last year, an Issue Focus, *Transforming the Economy*, was sold through a major distributor: the CNA ordered 150 copies. *Indicator SA's* special edition, *The Ethnic Taboo*, also sold well.

In June, the special 50th edition of *Indicator SA* was published by the Centre d'Etude d'Afrique Noire, based at the Institute of Political Studies in Bordeaux. Disappointing publishing errors occurred, but were later rectified. *Indicator SA*

Funds were raised for the publishing with *Indicator SA* of a Conflict Supplement, beginning in 1994. The Supplement will carry data compiled by the Conflict Trends in Natal Project, case studies, and analysis of the ongoing political violence in Natal and South Africa. Towards the end of the year, a readership survey was conducted. Responses were positive, and

revealed a loyal base of *Indicator SA* readers, a third of them in managerial positions, and a steady circulation and use of its articles as a resource.

Networking

One of the features of South Africa's transition is the number of new development forums and programmes committed to empowerment of disadvantaged groups and to capacity-building. Senior staff at CSDS are active participants, commissioned researchers or consultants in the following initiatives: Consultative Forum on Drought and Rural Development; Natal/KwaZulu Regional Economic Forum; National Housing Forum; Rural Education Forum; Rural Restructuring Programme for Land Reform; National Nutrition and Social Development Programme, Cooperative Youth Programme, National Telecommunications Forum, Economic Trends Research Group. Furthermore, research staff attempt to deliver their research products to as broad a range of recipients as possible through *Indicator SA* which achieves some fifty annual citations for new research findings from CSDS and Natal University in the national press, radio and television.

Training

Centre staff are involved in several outreach initiatives: A University Preparation Programme is offered as a bridging course for about 200 new black university students; staff participate in the community Service Training Programme (CSTP), teaching modules to trainees; The Maurice Webb Race Relations Unit undertakes an ongoing affirmative action programme to train researchers enrolled in postgraduate studies, and, with the assistance of the CSDS secretariat, to train admin interns (sponsored by CSTP); *Indicator* offers two affirmative action internships to new undergraduate aspirant journalists.

Teaching and supervision at our university and other South African universities forms an important supplementary role of the Centre. We offer workshops, teach modules, contribute to courses on research methodology, social policy and theory in sociology, social work, industrial and labour studies, town and regional planning and economic history.

Teaching

6 URBAN FORUM SEMINARS IN 1993

At an urbanisation symposium early in 1991, CSDS was requested to organise a series of open seminars on urbanisation. A small Steering Committee was established which selected speakers and topics during 1991. In 1993 and 1992, these seminars continued successfully. Prominent speakers made the following presentations:

- 1 **Professor Paulus Zulu**, CSDS: *Hostels and Violence in Natal*
- 2 **Professor Peter Robinson**, Department of Town and Regional Planning, University of Natal: *An update on the Cato Manor development process*
- 3 **Mr Ray Lombard**, Environment protection and waste management consultant: *Appropriate waste management technology in developing countries with particular reference to some experiences in Malawi*
- 4 **Mr Brian Walford**, Director of Corporate Services, Umgeni Water: *Addressing the water and sanitation needs of the hitherto underprivileged sectors of the population*

- 5 **Mr Jon van Coller**, Group Strategic Planning Manager, Romatex, and representative of the Regional Economic Forum: *The Natal/KwaZulu Regional Economic Forum*
- 6 **Mr Mike Mabuya Khulu**, Regional Secretary of NUMSA, co-ordinator of the COSATU Short Term Working Group in Natal and representative of the Regional Economic Forum: *Job Creation*.

7 **JILL NATTRASS VISITING FELLOW SEMINARS**

- 1 **Professor Joe Manyoni**, Jill Nattrass Visiting Fellow from Carleton University in Ottawa, Canada presented a paper in May on: *Myth of a new South Africa? The politics of despair, Black hopes, white fears*.
- 2 **Ms Linzi Manicom**, Jill Nattrass Visiting Fellow and specialist in international feminist popular education from University of Toronto, Canada presented a paper in June on: *In/stating women in the politics of transition*
- 3 **Mr Gavin Williams**, Jill Nattrass Visiting Fellow and Fellow in Politics and Sociology at St Peter's College, Oxford, presented a paper in November on: *The World Bank's Rural Restructuring Program: a Critique*.

8 **VISITORS TO THE CENTRE**

SHORT-TERM VISITORS

In February, **Dr Nkosazana Zuma** from the Centre for Health Studies at the Medical Research Council presented a seminar on her

work at the centre which includes research into AIDS in rural communities.

Peter Woodbodley, past student of the Centre for Applied Social Sciences and now working for the Constitutional Development Services paid a visit also in February.

From 7-10 March, **Roland Waast** and **Jean-Baptiste Meyer** from the Institut Français de Recherche Scientifique pour le Développement en Coopération (ORSTROM) visited CSDS and established links between the two centres.

In early July, **Professor Martin J Murray**, Rural Sociologist from State University, New York, reported on his visit to Cuba at a CSDS seminar.

Members of the **Klaserie Rural Facility at Wits** also presented a seminar in July describing this project.

Dr Christian Coulon, Director of CEAN (Le Centre d'Etude d'Afrique Noire), Bordeaux, France, and evaluator of RUSU, visited from 5-9 July together with **Odile Coulon**, a psychologist from Bordeaux. **Veronique Faure**, a student at the same Centre visited CSDS in April.

In August, **Pat Horn**, Co-ordinator of the Association of the Establishment of the Self-Employed Women's Union, (AFEFEWU) presented a talk and video in a two part series on SEWA, a Self-Employed Women's Association in India.

Mary Galvin, Co-ordinator of the Regional Consultative Forum on Drought and Rural Development for Natal/KwaZulu, addressed a CSDS seminar on the Forum in October.

Dr Jana Gasparikova from the Institute for Forecasting and **Dr Erika Kvapilova** from the Institute for Prognoses, visited the Centre. Both Institutes are part of the Slovak Academy of Sciences, Bratislava.

LONG-TERM VISITORS

Ms Jo Thorpe is using CSDS as her base while writing on development of African art and craft in Natal/KwaZulu as seen in the African Art Centre in the period 1960-1990. She initiated the African Art Centre when she was Regional Secretary for the South African Institute of Race Relations and was the Art Centre's co-ordinator 1991.

Geoff Schreiner spent 6 months at the Centre researching corporatism, the state and civil society in South Africa.

Roy Ainslee was violence monitor for the Natal Monitor Project, Maurice Webb Race Relations Unit from February to November.

Vaughan Williams and **Shirley Robinson**, both UCT MA students undertook fieldwork on a socio-economic project at Nkandla.

Marc Antoine Perouse de Montclos, PhD student from Paris was at CSDS from April to June. He was involved in a comparative study (Nigeria and South Africa) of the role of private security firms in urban areas.

Patrice Galand, PhD in African Studies, Bordeaux spent from July to September researching small business development in South Africa.

Michael Shervington, studying towards a BA Social Studies at Newcastle-on-Tyne visited from 9 August to 3 September researching on the future of youth with special emphasis on secondary education.

ARTICLES IN REFEREED JOURNALS

- Bekker S, Manona C, Pondoland looking north to Natal: common economic interests of different regional loyalties? **Journal of Contemporary African Studies**, 11(2), 1993
- Lund F J, State social benefits in South Africa, **International Social Security Review**, 46 (1), 1993
- Møller V, Research as a tool for empowerment in South Africa, **Ageing International**, 20 (1), 1993
- Morris M, Stavrou S, Telecommunication needs and provision to underdeveloped black areas in South Africa, **Telecommunications Policy**, 17 (7), 1993
- Williams G, The land question (in Kenya and South Africa), **Canadian Journal of African Studies**, 27 (3), 1993
- Zulu P, Durban hostels and political violence: case studies in KwaMashu and Umlazi, **Transformation**, 21, 1993

WHOLE BOOKS, CONTRIBUTIONS TO BOOKS

- Bekker S (ed) **Capturing the Event**, University of Natal, 1993
- Bekker S, Bromberger N, Cross C, Retrospective: les damnes de la terre, **La Republique Sud-Africaine Etat des Lieux**, Darbon D (ed), Karthala, Paris, 1993
- Bekker S, **Ethnicity in focus: The South African Case**, University of Natal, 1993
- Møller V, **Quality of life in unemployment**, HSRC, Pretoria, 1993
- Møller V, Une place au soleil: la qualite de la vie en Afrique du Sud, **La Republique Sud-Africaine Etat des Lieux**, Darbon D (ed), Karthala, Paris, 1993
- Zulu P, Does the "third force" exist?, **The Codesa File**, Meer F (ed), Madiba Publishers, Durban, 1993

Zulu P, *Les illusions perdues de la reforme politique, La Republique Sud-Africaine Etat des Lieux*, Darbon D (ed), Karthala, Paris, 1993

OTHER JOURNALS AND PUBLICATIONS

Ardington E, *Issues in rural education in Natal/KwaZulu, Education Monitor*, 4 (2), 1993

Ardington E, *Language policy in rural areas, Mathasedi*, 11 (2), 1993

Bekker S, *Capturing the violence, Financial Mail*, 127 (3), 1993

Cross C, Clark C, Bekker S, **Fresh starts: migration streams in the Southern Informal Settlements of the DFR**, 40, 1993

Cross C, Preston-Whyte E, Bromberger N, Evans J, **Structural approaches to the comparative study of the household economy: a pilot study in Natal/KwaZulu**, Unpublished HSRC Report submitted to the Programme on Marriage and Family Life, 1993

Cross C, Christiansen P, Bekker S, Bromberger N, Clark C, **The informal population of the DFR: an overview**, Unpublished report for the Town and Regional Planning Commission, 1993

Cross C, **Informal tenure in South Africa: Systems of transfer and succession**, Background report for the World Bank Rural Restructuring Programme, 1993

Cross C, **Developing bylaws for land redistribution communities: South African options for constituting beneficiary groups under rural reconstruction programmes**, Background report for the World Bank Rural Restructuring Programme, 1993

Cross C, Friedman M, **Women and the lefthand power: gender and land relations in contemporary South Africa**, Unpublished confidential report submitted to Tenure Research Programme, NLC, 1993

Cross C, Clark C, **Out of the wind: the African Independent churches and youth urbanisation in metropolitan Natal**,

- Report prepared for the Co-operative Programme on the youth, HSRC, CSD, 1993
- Fincham R, Krige D, Jinabhai C, Gibson C, **The evaluation and monitoring of the National Nutrition and social Development Programme (NNSDP), Natal Region**, Final report submitted to the Dept of National Health and Population Development (DNHPD), Natal Region, 1993
- Fincham R, Gibson C, Nutritional survey of Izingolweni and Nkandla, **Institute of Natural Resources Working Paper**, 105, 1993, 1-33
- Hindson D, Morris M, Byerley M, From violence to reconstruction: the making, disintegration and remaking of an apartheid city, **CSDS Working Paper**, 10, 1993
- Lund F, Called to account, **Sash**, 6 (1), 1993
- Lund F J, Paradox and policy: some lessons from CHW projects, **Critical Health**, 42, 1993
- Møller V, **The home environment and educational motivation and achievement: three generation household study**, Report prepared for the Co-operative Research Programme: South African Youth, 1993
- Møller V, Intergenerational family relations in urban black households, **Thambodala**, 4 (2), 1993
- Møller V, **Intergenerational family relations and wellbeing in three-generation urban black households**, Report for the HSRC - UCT Centre for Gerontology, 1993
- Møller V, Living with adult children: a benefit assessment of co-resident living arrangements among black and white older South Africans, **Southern African Journal of Gerontology**, 2 (1), 1993
- Møller V, **The study of perceived leisure needs in Natal/KwaZulu: a design proposal**, Memorandum prepared for the South African Association for Recreation and Tourism, 1993

- Møller V and Ferreira M, A place and time for a gerontology journal - editorial, **Southern African Journal of Gerontology**, 2 (1), 1993
- Morris M, Who's in? Who's out?, **Work in Progress**, 87, 1993
- Mzimela T, A directory of rural and peri-urban community based organisations in Natal, **Maurice Webb Race Relations Unit directory**, 1993
- Nina D, Remaking justice in South Africa: popular justice in transition, **CSDS Working Paper 8**, 1993
- Stavrou S, Nina D, Research on perceptions of justice: interaction between state justice and popular justice, **CSDS Working Paper**, 9, 1993
- Zulu P, **Pre-school education in African areas: the Greater Durban Functional Area**, Research report for the Community Services Training Programme, 1993

CONTRIBUTIONS TO INDICATOR QUARTERLY PUBLICATIONS

- Bekker S, Conclusion: the politics of ethnicity, **Indicator SA**, 10 (2), 1993
- Bekker S, Humphries R, Regional Forums: new frontiers, new creatures, **Indicator SA**, 10 (4), 1993
- Bernstein H, The maize industry: business as usual?, **Indicator SA**, 10 (4), 1993
- Howe G, The Trojan Horse: Natal's civil war, 1987-1993, **Indicator SA**, 10 (2), 1993
- Louw A, Bekker S, War of weapons, war of words, **Indicator SA**, 11 (1), 1993
- Manyoni J, The uses and abuses of ethnicity, **Indicator SA**, 10 (2), 1993
- Manyoni J, Black hopes, white fears, racial myths..., **Indicator SA**, 10 (4), 1993
- Nxumalo B, The culture of learning: a survey of KwaMashu schools, **Indicator SA** 10 (2), 1993

Williams G, Rural restructuring: the World Bank's "options",
Indicator SA, 11 (1), 1993

Zulu P, de Haas M, Ethnic mobilisation: KwaZulu's politics of
secession, **Indicator SA**, 10 (2), 1993

PAPERS GIVEN AT CONFERENCES

Ardington E, What is rural education and is it necessary, possible
or advisable to consider it as a separate sector in education?,
Farm/Rural Schools Workshop, Centre for Education Policy
Development, Broederstroom, South Africa, 1993

Bekker S, What is a South African? Ethnicity change in South
Africa, Identity in Africa, Bayreuth, Germany, 1993

Bekker S, Current thinking on appropriate regional development
strategies, CSIR conference on social benefits associated with
development, Pretoria, South Africa, 1993

Bekker S, Critical comments on options for development during
transition in South Africa, Workshop convened by UN
Commission for Africa and South African counterparts
entitled "Towards a development strategy for South Africa".,
Johannesburg, South Africa, 1993

Bekker S, Reshaping the prosecution service for a new South
Africa - general overview, Violence, corruption and the
South African prosecution service - the road ahead,
Pietermaritzburg, South Africa, 1993

Bekker S, What is a South African?, Change, ethnicity and
ideology in South Africa, Comparative research on welfare
states in transition, Oxford, England, 1993

Cross C, Luckin L, Where does sustainability come from?
Institutions and environmental relations in South Africa rural
communities, Veldtrust conference on sustainability
development, Pretoria, South Africa, 1993

Cross C, A brief overview: some institutional issues facing rural
development in South Africa, HSRC conference on global

- change and social transformation, Pretoria, South Africa, 1993
- Cross C, An overview of rural poverty in South Africa based on secondary sources, Conference organised by the South African Labour and Development Research Unit, Cape Town, South Africa, 1993
- Cross C, Rural institutions as they relate to land redistribution initiatives, Association for Rural Advancement Workshop on institutions and land reform, Pietermaritzburg, South Africa, 1993
- Cross C, Unpaid labour and subsistence agriculture, Emancipation Commission and Research Department with the Macro-Economic Research Group (MERG) joint workshop on unpaid labour, Johannesburg, South Africa, 1993
- Cross C, Some recent trends in urbanisation in metropolitan Natal, Urban Foundation conference on contemporary trends in South Africa in honour of Peter Becker, Johannesburg, South Africa, 1993
- Cross C, Evans J, Luckin L, An anthropological evaluation of the Farmer Support Programme in Khanyile Ward, Nkandla, and in KwaMachi Ward, Izingolweni, Development Bank of Southern Africa conference on the Farmer's Support Programme, Midrand, South Africa, 1993
- Lund F, The costs and effects of privatisation of various social and other services on unpaid labour, Emancipation Commission and Research Department with the Macro-Economic Research Group (MERG) joint workshop on unpaid labour, Johannesburg, South Africa, 1993
- Lund F J, Inserting social security between relief and development, Conference on Food Security in South Africa, National Consultative Forum on Drought, Johannesburg, South Africa, 1993
- Møller V, Intergenerational relations in a society in transition: a South African case study, XVth International Congress of Gerontology, Budapest, Hungary, 1993

- Møller V, Roles for older people in the "new" South Africa: continuity and change , South African Council for the Aged Biennial conference, Durban, South Africa, 1993
- Morris M, Historically inherited legacies: a comparative perspective on the transition from ideologically exclusive authoritarian regimes to democratic inclusive societies, Conferences on the Legacy of the past as a factor of the transformation process in post communist countries of central Europe, Prague, 1993
- Morris M, Telecommunications as a national resource: how can mobiles effectively contribute to significant progress in Southern African telecommunications? Mobile communications: new developments and strategies in cellular telephony, Midrand, South Africa, 1993
- Morris M, Methodological problems in tackling the micro and macro socio-economic issues in the transition to democracy in South Africa, Conference on methodological challenges in/for the Human Rights, Bratislava, Slovakia, 1993
- Morris M, Political violence in South Africa, Workshop hosted by Walter McLean, Member of Parliament for the Canadian Federal Assembly, Ottawa, Canada, 1993
- Stavrou S, Policy options for regulating the frequency spectrum and geo-stationary satellite orbit, National Telecommunications symposium, Johannesburg, South Africa, 1993
- Stavrou S, a review of macro demographic and economic trends in Natal/KwaZulu, Conference of Natal Broadcasting services, SABC, Durban, South Africa, 1993
- Stavrou S, Post-electrification research in four communities in KwaZulu, ESCOM Natal workshop, Durban, South Africa, 1993
- Williams G, Promoting rural livelihoods, Workshop on creating rural livelihood in South Africa, Montague, South Africa, 1993

- Williams G, Setting the agenda: a preliminary critique of the World Bank's Rural Restructuring Program, Conference organised by the Land and Policy Centre, Johannesburg, South Africa, 1993
- Zulu P, The Structure of violence in South Africa: an overview, Conference on Peace and Human Rights, by the National Association of Democratic Lawyers, Durban, South Africa, 1993
- Zulu P, The structure of violence in South Africa: and overview, National Association of Democratic Lawyers conference on peace and human rights, Durban, South Africa, 1993
- Zulu P, Black consumer culture: a "cultural" or an economic reality, Urban Foundation conference on South Africa's future realities, Johannesburg, South Africa, 1993
- Zulu P, Third force theories and political violence in South Africa, Joint conference of the Institute for a Democratic South and the HSRC, Pretoria, South Africa, 1993

REFEREED CONFERENCE PROCEEDINGS

- Bekker S, Towards draft policy for Informal Settlement Development in Natal Region, **Socio-economic development of informal settlements in urban areas on Natal/KwaZulu**, HSRC, 1993.



This work is licensed under a
Creative Commons
Attribution – NonCommercial - NoDerivs 3.0 License.

To view a copy of the license please see:
<http://creativecommons.org/licenses/by-nc-nd/3.0/>

This is a download from the BLDS Digital Library on OpenDocs
<http://opendocs.ids.ac.uk/opendocs/>