

**Working Paper  
334**

**ECONOMIC REFORMS AND  
INDUSTRIAL PERFORMANCE  
An Analysis of Capacity Utilisation  
in Indian Manufacturing**

**E. Abdul Azeez**

June 2002

Working Papers published since August 1997 (WP 279 onwards)  
can be downloaded from the Centre's website ([www.cds.edu](http://www.cds.edu))

**ECONOMIC REFORMS AND INDUSTRIAL PERFORMANCE**  
**An Analysis of Capacity Utilisation in Indian Manufacturing**

**E. Abdul Azeez**

June 2002

---

This paper is derived from my M.Phil thesis submitted to the Jawaharlal Nehru University, New Delhi. I thank my supervisors Dr. K Pushpangadan and Dr. Achin Chakraborty for their insightful comments and enduring inspirations while pursuing this work. The suggestions and encouragement by Professor KK Subrahmanian and Dr. M Suresh Babu are warmly acknowledged. An earlier version of the paper was presented at the conference on *Models and Methods in Economics*, at the Indian Statistical Institute, Calcutta, on 30<sup>th</sup> January 2002. I thank Professor Dipankor Coondoo, who offered critical comments on the paper, and other participants in the seminar for their suggestions. And the comments and help extended by Jojo Jacob, Parameswaran and Lakshmi Nair are also acknowledged. The usual disclaimer applies.

## ABSTRACT

This paper examines the performance of Indian manufacturing sector in terms of economic capacity utilization (CU), over 1974-1998. An attempt is also made to understand the impact of policy changes, *inter alia*, on the observed movements of CU. The economic CU, defined as the realization of output at which the short run average total cost is minimized, is estimated using a translog cost function. We observe cyclical movements in CU over the period. Three distinct phases have been identified with regard to the movements in CU. While phase one (1974-1984) is characterized by relatively wide fluctuations, phase two (1985-1990) witnessed a roughly stable level of utilization. In the third phase (1991-1998), a variant of the fluctuations witnessed in the first phase is seen to have resurfaced. Interestingly, there has not been any significant correspondence between the observed phases of CU with the corresponding policy environment. While supply and demand side factors are significant in determining CU in Indian manufacturing, the impact of economic reforms *per se* is not remarkable.

**Key words:** India, Manufacturing, Capacity Utilization, Economic reforms

**JEL Classifications:** D24, L5, L60, O47

## I. INTRODUCTION

The industrial sector in India has been undergoing significant changes both in its structure and pattern owing to the policy changes since the first industrial policy resolution of 1948 onwards. In pursuit of building an industrial base for the country, the policy makers advocated a series of guidelines characterized by pervasive licensing, reservation of key areas for public sector, inward oriented trade policy, control over large domestic firms, foreign direct investment, technology transfer and interventions in factor market. However, there emerged a view that the restrictive industrial policy regime, which roughly prevailed till 1985, created a high-cost industrial structure characterized by technological obsolescence, low rates of productivity, capacity utilization (CU) and growth. As the rough nature of this complex control system became more and more obvious, there emerged consensus over the need for a re-orientation in planning. The increasing skepticism over the success of the import-substituting regime in the country (see Bhagwati and Desai, 1970, Little et al, 1970) resulted in a shift in the policy thinking towards a more liberal policy regime, based on the grounds of achieving efficiency and competitiveness. This resulted in a shift in the policy sphere since the late seventies<sup>1</sup>, nevertheless, it witnessed further

---

1 In the second half of the 1970s the government started relaxing the foreign trade regime and a number of imported items were placed on the open general license list.

significant changes in its direction during the 1980s.<sup>2</sup> However, the key role played by the state in allocating resources remained decisive. The shift in the policy paradigm got further stimulus in 1991 with the introduction of new economic and industrial policies, where the market is allowed to play a decisive role.

These major changes in the policy regimes created debates among economists regarding the impact of the liberal policy environment on industrial performance in India. We, in this paper examine the performance of Indian manufacturing sector in terms of Capacity Utilization (CU), over 1974-98, a reasonable number of years that cover the highly restricted, the partially liberalized and the fully liberalized regimes. The study differs from earlier studies on two grounds. Firstly, we estimate economic capacity utilization for the Indian manufacturing sector using a theoretically pertinent methodology. Secondly we make an attempt to understand the impact of policy changes, *inter alia*, on the movements of CU.

The rest of the paper is organized as follows. A brief discussion on the relationship between economic reforms and capacity utilization is provided in the next section. The third section briefly reviews some of the recent studies on capacity utilization in Indian industry. Section four discusses the concept of economic capacity utilization and the methodology employed for estimating it. The fifth section explains the data and variables and the sixth section discusses the empirical results. Section seven examines the relationship between selected factors and CU. And the final section concludes the paper.

---

2 For a discussion of the reforms in 1985 see Khullar (1991), and World Bank (1989). Following the major changes in the policy environment, the turn around in output growth during the eighties is often attributed to the changes in policy regime (Ahluwalia, 1985 and 1987).

## II. ECONOMIC REFORMS AND CU: THE ANALYTICAL UNDERPINNINGS

The shift towards a liberal industrial policy paradigm during the late eighties and early nineties is justified by a number of arguments, both theoretical and empirical.<sup>3</sup> The micro economic arguments for a more liberal policy atmosphere stem from the potential gains accruing from increased competition and exploitation of scale economies. Then there are the macro economic arguments that link appropriate exchange rate policies with the exploitation of scale economies through increased exports, and with better capacity utilization (Srivastava, 1996). Industrial efficiency may be achieved through import liberalization by exposing domestic producers to greater competition, internal and external, and by improving access to imported intermediate inputs and capital goods. It is argued that the regulation regime, giving protection to any domestic producer of an import substitute, regardless of cost, efficiency and comparative advantage, clearly created a climate for the existence of excess capacity<sup>4</sup> in the sense that costs could be well above the technological minimum. By reducing the rate of export growth, the policy also affected CU with a low growth of export demand.<sup>5</sup> Further the policy of issuing import license based on the installed capacity

---

3 See Bhagwati and Srinivasan (1975), Bhagwati and Desai (1970), Ahluwalia (1991) and Srivastava (1996).

4 It is argued that the restrictive import policy, if maintained for a number of years the artificially created high levels of profitability could lead to over investment in the industry resulting in a general fall in productivity and capacity utilization. See Winston (1974)

5 The central idea of the argument that more exports would increase aggregate output rests on the idea that domestic resources are under utilized. If all resources were fully utilized, any increase in one component of demand would necessarily lead to a fall in another.

induced firms to expand their capacity in order to get more licenses.<sup>6</sup> The controlled regime also allowed firms to maintain their monopoly power by shielding them from competition, both domestic and external, and thus making them to operate at high levels of profit even with excess capacity. As regards capacity utilization, apart from operating in a protected domestic market, highly subsidized inputs and controlled output prices further enable firms to make profits even at lower levels of utilization. Thus, it is viewed, that the limited threat of domestic entry and virtual absence of foreign competition allowed the existence of excess capacity in the Industrial sector in India.

These arguments, *prima facie*, bring the notion that a more liberal policy atmosphere will lead to better capacity utilization. With regard to the external oriented policy measures, however, one may have views to the contrary which undermine any strong relationship between the policy environment and the CU. This is because the direction of change in CU, as a result of a policy change in the direction of more external orientation, is ambiguous, from the theoretical point of view. Variations in CU are the systematic outcome of the rational optimization procedure of firms depending on input availability and market situations. Persistent under-utilization of optimal capacity, therefore, appears to be puzzling in view of the fact that firms are expected to optimize through their decisions on capacity creation and utilization. In a liberalized regime, as the domestic market is more integrated with the international market and the demand fluctuations are likely to be more pronounced, there is

---

6 Bhagwati and Desai (1970) argues that since Actual User licenses (import licenses) were allotted equitably on the basis of existing capacity there were incentives for expanding capacity so as to have access to more imports. Bhagwati and Srinivasan (1975) further argues that the system of import licensing might have led to the excessive holding of inventories of intermediates and raw materials by Indian firms.



likely to be more fluctuating movements in utilization. In such a context, the relationship between liberal economic reforms and the CU depends on the effectiveness of policy changes in relaxing both supply and demand bottlenecks. However, firms may still keep idle capacity even in a more competitive market condition, for different set of reasons. The recent theoretical works in industrial organization allude to the possibility that excess capacity may be used as a strategy for deterring entry, as firms have to assure their survival in the market. Spence (1977) observes that 'competitive profit maximizing' firms can carry excess capacity to deter a vigorous threat of entry.<sup>7</sup> Bulow et al (1985) further confirm this argument. The basic entry deterrence argument is that excess capacity enables incumbents to threaten to expand output and cut prices following entry thereby making entry unprofitable. However, in India the existence of excess capacity did not deter entry in the earlier regime, as the protected environment offered adequate profit opportunities for those who could obtain a license to enter (Bhagwati and Srinivasan, 1975); the entry was rather barred by the licensing policy. But in the changed policy environment one may not reject the possibility of firms investing in excess capacity for both strategic and non-strategic reasons.<sup>8</sup>

---

7 ...Under incomplete markets, fixed cost must be covered if firms are to survive. Hence prices must exceed marginal cost, as different from the perfect situations, by a mark-up sufficient to cover fixed charges. This leads to average cost pricing hence downward price rigidities in the face of excess capacities. When a price is down ward rigid, quantity constraints comes into ration excess supply-capacities are unutilized (Dreze, 1999).

8 Profit maximizing firms hold non-strategic excess capacity in markets where demand is cyclical or stochastic, or where plants are inherently lumpy or subject to economies of scale. Strategic excess capacity may be built either to deter new entry or to pre-empt existing rivals (Lieberman, 1987).

### III. CU IN INDIA: A BRIEF REVIEW OF LITERATURE

While most recent studies examining the industrial performance in India after policy reforms focused on the analysis of total factor productivity growth, diminutive attention was given to capacity utilization. It may be noted that even the analysis of total factor productivity would be more meaningful if adjustment is made for fluctuations in capacity utilization<sup>9</sup>. In view of the overriding importance of capacity utilization in the overall resource-use efficiency of the economy, however, a few researchers have tried to examine the trends and determinants of capacity utilization in Indian industry. In line with the earlier attempts<sup>10</sup>, recent studies (Ajit, 1993, Burange, 1992) also show the existence of excess capacity in the industrial sector. Studies that examined the determinants of CU found that most of the industries are demand constrained (Goldar and Renganathan, 1991, Srinivasan, 1992). Also there are a few studies that correlate utilization with public investment in infrastructure, capital and intermediary imports and the adoption of liberal policy (Seth, 1998). An examination of the literature reveals, however, that most studies have used conventional measures in measuring CU, and have paid insufficient attention to the possible theoretical problems. Since most of them followed the conventional engineering (installed capacity) and Wharton approaches, the principal problem underlying the interpretation of most of the existing studies is the weak link between the underlying economic theory and the used measures of CU; a theoretical investigation into the problem is hard to find.

---

9 Hulten (1986), Morrison (1986) and Berndt and Fuss (1986) discuss the importance of adjusting total factor productivity measures by properly measured capacity utilization ratios.

10. Azeez (1999) provides a review of these studies.

It has long been recognized in the literature that the engineering approach is deficient, in the sense that it is not based on any explicit theoretical foundation.<sup>11</sup> The economic capacity of a given stock of capital will vary with the relative price changes, resulting in a change in the optimum combination of capital and other variable inputs. Therefore, the role of non-capital input in deciding potential is crucial. In India engineering CU figures are mainly based on the installed capacity data collected from firms and published by different agencies like DGTD. The data that many studies used for this purpose are quite unsatisfactory in that they compound inevitable conceptual difficulties with several statistical drawbacks (Bhagwati and Srinivasan, 1975).<sup>12</sup> Additionally, these figures give highly exaggerated picture of actual capacity, mainly due to policy reasons and reporting errors.<sup>13</sup> The definition of installed capacity differs from firm to firm, there is no uniform way to define it and it is not clear how firms respond to the question of their capacity. Many of the firms report capacity based on a single shift operation, which is not the case in practice. This creates ambiguity in explaining the results also. Moreover, as the economy moved from a system of licensing and strict control on production to a system of capacity increase endorsements and then further to broad-banding and then finally to de-licensing, the importance of the installed capacity figure to the government agencies (such as DGTD) has declined substantially.

---

11 The pioneering contribution by Berndt and Morrison (1981) has clearly pointed out the importance of applying economic theory in estimating CU.

12 For details on the inadequacies of these data, see Bhagwati and Srinivasan (1975) and Slocum (1970).

13 Firms used to report an exaggerated picture of their actual capacity in order to obtain more import licenses.

The Wharton indices are also questioned on many theoretical grounds.<sup>14</sup> In this method, one first identifies the major peaks in a seasonally adjusted output series, assuming that the major peaks represent output where resources are utilized at full capacity. Joining these major peaks by linear interpolation, potential output is estimated for non-peak years. It is unrealistic to assume that each major peak represents the same intensity of resource utilization. Assuming a constant arithmetic growth rate of potential output between peaks is also not justifiable.

It is, thus, observed that the earlier studies on capacity utilization has left unaddressed several theoretical and data problems in measuring CU. This motivates us to have an inquiry into the economic capacity utilization in Indian manufacturing using a more reliable database and also to examine how CU is affected *inter alia* by policy changes.

#### **IV ECONOMIC CAPACITY UTILIZATION: CONCEPT AND MEASUREMENT**

Capacity utilization has been extensively used in the literature as an indicator of industrial performance as it pictures both the use of scarce resources as well as the state of demand. It has been defined as the ratio of actual output to capacity or potential output; it captures the output gap between actual output and capacity output. While potential output can broadly be defined as the maximum possible output given the level of inputs and technology, there is little consensus on its measurement. Economists recognize that such a level of output "is conditioned in most cases by economic circumstances and must be

---

14 A detailed review of different measures of capacity utilization and associated problems is seen in Christiano (1981).

interpreted as being the 'optimum output' from the economic point of view". Cassel (1937) and Hickman (1964) define it as the output ( $Y^*$ ) at which the short run average total cost curve reaches its minimum; a measure of potential output given a firm's short-run stock of capital and perhaps other fixed inputs in the short run (Nelson, 1989).<sup>15</sup> We follow this definition of economic capacity.

Consider a firm with a well-behaved production function

$$Y = f(L, F, M, K, T) \quad (1)$$

where  $Y$  is the level of output,  $L$ ,  $F$ ,  $M$  and  $K$  are the inputs of labor, fuel, material and capital respectively.  $T$  is the time trend to represent the disembodied technical change. Let the capital stock be a quasi-fixed input.<sup>16</sup> Then the optimization problem is to maximize variable profits, i.e revenue minus variable costs, conditional on output price  $P$ , prices of variable input prices  $P_i$ , and fixed input  $K$  (Lau, 1976). Following the theory of duality the optimization problem may be reformulated as that of minimizing variable cost (Berndt and Morrison, 1981) conditional on  $Y$ ,  $P_i$ ,  $K$  and  $T$ . Then we have a dual variable cost function.

$$VC = f(Y, P_i, K, T) \quad (2)$$

Where  $VC$  is the total variable cost and  $P_i$  represents the vector of variable input prices. Estimation of optimal or potential output from the above-specified cost function requires a suitable functional form.

15 Changes in such economic variables as input prices, and the short-run fixity of certain factors (such as capital) may influence capacity output defined by the economic approach (Morrison, 1985). In other words, the potential may be defined as the maximum output that can be produced with existing plant and equipment, provided that the availability of variable factors of production is not restricted.

16 Since capacity output is inherently a short run notion, it is necessary that the modeling framework incorporates the short run constraints facing the firms (Berndt and Hesse, 1986)

Exploiting the recent developments in the theory of short run equilibrium we employ a translog short run cost function or variable cost function, following Berndt and Morrison (1981), Berndt and Hesse (1986) and Nelson (1989).

$$\begin{aligned} \ln VC = & \alpha_0 + \sum_{i=1}^n \alpha_i \ln P_i + 0.5 \sum_{i=1}^n \sum_{j=1}^n \alpha_{ij} \ln P_i \ln P_j + \beta_Y \ln Y + 0.5 \beta_{YY} (\ln Y)^2 \\ & + \sum_{i=1}^n \beta_{Yi} \ln Y \ln P_i + \gamma_K \ln K + 0.5 \gamma_{KK} (\ln K)^2 + \sum_{i=1}^n \gamma_{Ki} \ln K \ln P_i \\ & + \gamma_{KY} \ln K \ln Y + \delta_T T + 0.5 \delta_{TT} T^2 + \sum_{i=1}^n \delta_{Ti} T \ln P_i + \delta_{TK} T \ln K + \delta_{TY} T \ln Y \end{aligned} \quad (3)$$

Imposing the parameter restrictions:

$$a) \Sigma \alpha_i = 1, \quad b) \Sigma \alpha_{ij} = \Sigma \alpha_{ji} = 0, \quad c) \Sigma \beta_{Yi} = 0, \quad d) \Sigma \gamma_{Ki} = 0 \quad (A)$$

for homogeneity, and differentiating equation (3) with respect to the exogenous variables, input prices  $P_i$ , given  $K$  and  $Y$ , we have,

$$\frac{\partial \ln VC}{\partial \ln P_i} = \alpha_i + \sum_{j=1}^n \alpha_{ij} \ln P_j + \beta_{Yi} \ln Y + \gamma_{Ki} \ln K + \delta_{Ti} T = \mu_i; i=1, \dots, n \quad (4)$$

Where  $\mu_i$ , following Shephard's lemma, is the cost share of  $i^{\text{th}}$  input.

The share equations are included in the model in order to incorporate the economic optimization behavior of firms. The economic measure of capacity output ( $Y^*$ ) and utilization ( $Y/Y^*$ ) are defined in terms of short run average total cost (SATC) which includes both average total variable cost and average total fixed cost. The total fixed costs are defined as the expenditures on the fixed input, capital. Then the short run total cost,  $SRTC = VC + P_K K$ , where  $P_K$  is the price of capital. Subsequently the short run average total cost,  $SATC$  is

$$SATC = (VC/Y) + (P_K K/Y) \quad (5)$$

Now if the potential output  $Y = Y^*$  is defined at the point where SATC is minimized, then  $(\partial SATC / \partial Y^*) = 0$ , which in terms of (5) implies that

$$(1/Y^*)(\partial VC / \partial Y^*) - (VC/Y^{*2}) - (P_K K/Y^{*2}) = 0 \quad (6)$$

Since  $\partial \ln VC / \partial \ln Y^* = (\partial VC / \partial Y^*)(Y^* / VC)$ , the required estimate of  $\partial VC / \partial Y^*$  is  $(\partial \ln VC / \partial \ln Y^*)(VC/Y^*)$ , where

$$\frac{\partial \ln VC}{\partial \ln Y^*} = \beta_Y + \beta_{YY} \ln Y^* + \sum_{i=1}^n \beta_{Yi} \ln P_i + \gamma_{Ki} \ln K + \delta_{Ti} T = \mu_Y \quad (7)$$

Substituting (7) in (6), we have

$$\frac{\partial SATC}{\partial Y^*} = VC (\mu_Y - 1) - P_K K = 0 \quad (8)$$

Where  $\mu_Y$  and  $VC$  are functions of both  $\ln Y^*$  and  $Y^*$  and therefore, it is not possible to obtain an analytical or closed model solution for  $Y^*$  in (8). Instead, numerical or iterative computational procedure must be employed. Then the estimate of CU will be the ratio of  $Y$  to  $Y^*$ .

## V. DATA AND VARIABLES

The study covers the organized segment of the manufacturing sector in India at the aggregate level, which includes 18 two-digit industries, for the period 1974-98. The selection of time period is largely guided by the availability of data as well as the policy changes occurred during this period. The data on output, capital, labor, fuel and materials required for the analysis are taken from various issues of the Annual Survey of Industries (ASI) published by the Central Statistical Organization. The variables are constructed as follows.

*Output* is defined as gross value of output deflated by the wholesale price index (WPI) of manufactured products (1981-2=100). For the construction of a series on *capital stock* the perpetual inventory method is followed. Using the gross net ratio provided in Hashim and Dadi (1973), we construct a benchmark year capital stock for 1960. Then a perpetual inventory component is added to this benchmark year estimate in order to obtain the consistent series of *capital stock* for the subsequent years.<sup>17</sup> *Total cost* is defined as the sum of compensation to labor, fuel, material and capital inputs. *Capital cost* is defined as the gross operating surplus after adjusting for emoluments.<sup>18</sup> The value of total emoluments is considered as the *labor cost* and the total emoluments divided by number of employees as the *wage rate*. For the *price of fuel*, we construct a composite price index by combining price indices of different components of total fuel consumed by the manufacturing sector. The input components are classified according to the availability of WPI and are then clubbed to a single price using appropriate weights. The weights are calculated from the Input Output Transaction Matrix, 1989-90. The value of total fuel consumed, as per ASI definition, is taken as the *fuel cost*. The value of total purchase of materials is used as the *cost of materials*. For constructing the *price of material* we follow the same procedure as in the case of fuel.

---

17 Azeez (1999) discusses the capital stock estimation procedure in detail.

18 It may be noted here that sum of labor and capital cost is identically equal to gross value added at factor cost (Berndt and Hesse, 1986). However, a high gross operating surplus does not make it less profitable to employ more capital. There exists some skepticism on whether the capital cost is sufficiently exogenous or not, however, the absence of any other better data makes us to rely on this. I am grateful to Prof. J.S Cubbin for making me aware of this problem, while reading through the discussion on data and variables in Azeez (2001).



## VI. EMPIRICAL RESULTS

We estimate the equations (3) and (4) simultaneously, subject to the parameter restrictions (A). Since  $\sum \mu_i = 1$ ,<sup>19</sup> we estimate the model after dropping the labor share equation (by normalizing all the prices and variable cost). For estimation we follow an iterative version of the Zellner's Seemingly Unrelated Regression Estimation (SURE) technique<sup>20</sup>, which are equivalent to maximum likelihood estimates, in order to ensure invariance with respect to the choice of which share

**Table 1: SURE Estimates of Translog Cost Function**

Parameters	Estimates		Parameters	Estimates	
$\alpha_0$	0.009	(0.023)	$\gamma_{KF}$	0.153	(0.031)
$\alpha_F$	0.056	(0.004)	$\gamma_{KM}$	-0.348	(0.047)
$\alpha_M$	0.801	(0.007)	$\gamma_{KY}$	-2.636	(0.459)
$\alpha_{FF}$	0.060	(0.006)	$\delta_T$	0.020	(0.019)
$\alpha_{MM}$	0.109	(0.006)	$\delta_{TT}$	-0.009	(0.008)
$\alpha_{FM}$	-0.076	(0.005)	$\delta_{TF}$	-0.010	(0.003)
$\beta_Y$	0.417	(0.105)	$\delta_{TM}$	0.024	(0.004)
$\beta_{YY}$	8.757	(0.441)	$\delta_{TK}$	0.565	(0.096)
$\beta_{YF}$	-0.026	(0.022)	$\delta_{TY}$	-0.431	(0.041)
$\beta_{YM}$	0.069	(0.038)	DW (VC)	1.73	
$\gamma_K$	0.425	(0.251)	DW ( $\mu_F$ )	1.60	
$\gamma_{KK}$	-5.796	(1.317)	DW ( $\mu_M$ )	1.37	
Log likelihood	318.4				

Note: standard errors are given in parentheses.

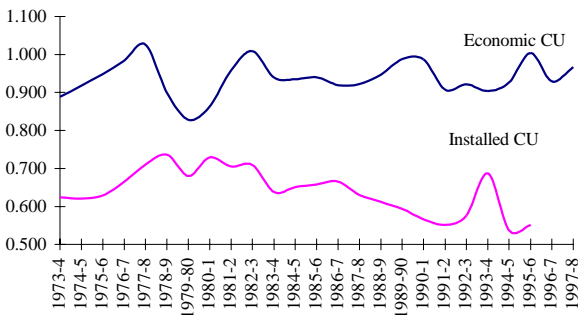
DW = Durbin Watson statistic

- 19 The input shares in variable cost must sum to unity, by definition. This will give a singular disturbance covariance matrix
- 20 Kmenta et al. (1968) has shown that iteration of the Zellner estimation procedure until convergence results in maximum-likelihood estimates and is a computationally efficient method.

equation we drop. The estimated SURE coefficients together with their test statistics and the maximized value of log likelihood are recorded in table 1. The fit is generally good for the variable cost equation and fuel share equation, though not quite good for the material share equation (the R-square values are 0.97, 0.72 and 0.09 respectively for the variable cost function, share equations of fuel and of materials). The Chi-square value (1606.7) produced by the Wald test (for testing the validity of imposed restrictions) and insignificant auto correlation exhibits the robustness of the model. However, the estimated cost function is well behaved only if it is concave in input prices and its input share functions are positive. It is found that the estimated variable cost shares are positive at all observations and the Hessian matrix based on the parameter estimates are negative semi-definite, thereby satisfying the first and second order conditions.

The estimated parameters and the time series data are employed with (8) to calculate the potential output ( $Y^*$ ), the output where the short run average total cost is minimized, which is used to estimate economic CU. As a closed form solution is not possible for (8) a numerical iterative technique is followed. The ensuing estimates of CU ratios,

Figure 1  
Economic and Installed Capacity Utilization in Indian Manufacturing



$CU \equiv Y/Y^*$ , together with the ratios based on the installed capacity<sup>21</sup> are plotted in figure 1.

A comparison of two measures shows that in all the years capacity utilization estimates using the cost function exceed the traditional engineering approach (or installed capacity). This does not come as a surprise because the level of capacity depends on the relative proportion in which the fixed and variable inputs are combined. The volume, intensity and cost of variable inputs, therefore, may restrict the economic capacity. Thus, the engineering measures of capacity utilization significantly underestimate the more relevant economic capacity utilization. Apart from the differences in the level, there are differences in the movements also. We have calculated the simple correlation between CU measures based on dominant methods in the literature, the engineering approach, the Wharton index and the minimum capital output ratio ( $K/Y$ ) approach (see table 2). The economic capacity utilization is found to have high correlation with Wharton indices throughout the period. The highest average utilization in all the measures has been observed during 1985-91 period, except in installed CU, where it is during 1980-85. In the case of lowest average utilization, while minimum capital output ratio and installed CU figures show it during 1992-98, economic CU and Wharton indices show it during 1974-80 (table 3). While the economic CU reached its peak in 1976-7 it registered a sharp decline in 1979-80.<sup>22</sup> In most years the estimated economic CU are below unity.<sup>23</sup>

---

21 The data on installed CU are taken directly from Burange (1992), till 1986-7 and thereafter we calculated the simple averages for the companies reported in PROWESS, the database provided by Centre for Monitoring Indian Economy.

22 Incidentally, this sharp decline in the CU in the 1980s is observed in many other countries as well. See for example Berndt and Hesse (1986).

23 CU greater (less) than one is informative for it insinuates that production is to the right (left) of the minimum cost point, thereby inducing cost reducing net investment (disinvestment).

**Table 2: Correlation between different measures of CU**

1974-85	Installed CU	Wharton CU	K/Y CU	Economic CU
Installed CU	1.000			
Wharton CU	0.122	1.000		
K/Y CU	0.179	0.990	1.000	
Economic CU	0.067	0.979	0.987	1.000
1986-91				
Installed CU	1.000			
Wharton CU	-0.900	1.000		
K/Y CU	-0.638	0.826	1.000	
Economic CU	-0.867	0.993	0.884	1.000
1992-98				
Installed CU	1.000			
Wharton CU	-0.472	1.000		
K/Y CU	-0.574	0.684	1.000	
Economic CU	-0.409	0.971	0.545	1.000

**Table 3: Average CU in Indian Manufacturing, Different methods**

Period	Installed	Wharton	+ K/Y ratio	Economic
1974-98	0.640*	0.928	0.895	0.938
1974-80	0.674	0.897	0.890	0.919
1974-85	0.675	0.917	0.907	0.933
1980-85	0.685	0.916	0.904	0.922
1985-91	0.625	0.948	0.924	0.948
1992-98	0.580*	0.929	0.846	0.937

Notes : \*This figure is only up to 1995-6

$$+ CU = Y/[K/(\min(k/y))]$$

Over the period as a whole, both potential and actual output grew at a similar rate say around 7.3 percent. However, the expansion of potential shows a significant acceleration. It is also observed, while looking at the growth rates of inputs that the non-accelerating output growth has been mainly due to the intensive use of capital input. Whereas the growth rate of capital input is significant and accelerating, the growth of employment is very negligible (see table 4). The significant growth of capacity output, therefore, may be attributed to the accelerating growth of additional investment in the sector.

**Table 4: Growth of inputs and output, Aggregate Manufacturing, 1974-98**

Output	7.39
NVA*	6.79
Fixed Capital*	8.75
Capital Stock*	7.65
Investment*	7.67
Employment	1.55
Fuel	6.43
Material	6.49
Potential Output*	7.28

Notes: Growth rates are estimated from ASI data using an exponential fit. All are significant at 1 % level.

Variables with \* mark show a significant acceleration in their growth rates.

### ***CU in Indian Manufacturing: Analyzing the trends***

From the Figure 1, we also observe three distinct phases in the movements of economic CU. Phase one, from 1973-4 to 1983-4, is characterized by relatively wide fluctuations. In phase two, covering the period 1983-4 to 1989-90, CU is roughly stable with very little

fluctuations. In the final phase, 1990-1 to 1997-8, CU shows a fluctuating tendency.

To examine phase one, CU shows an increasing trend from 1973-4 to 1977-8, following an increase in the domestic demand due to an increase in the national income. The gross domestic expenditure during this period registered an average growth rate of 4.8 per cent per annum. After the peak growth of CU in 1977-8, it shows a declining trend in 1978-9 and 1979-80 following a slump in the demand for which already different explanations have been provided in the literature.<sup>24</sup> This together with the impact of second and third oil shocks might have resulted in a drop in utilization. The period 1980-83 clearly marked a significant recovery in utilization. This was also the period in which the highly debated turn around in Indian industry occurred.<sup>25</sup> In addition to the revival in agricultural production, the policy reforms during this period that regularized the excess plant capacity might also have helped improve the CU.

The beginning of second phase coincides with the partial liberalization of the mid eighties. The period witnessed the gradual replacement of the protected regime with ambitious schemes for modernization and capacity rejuvenation. The industrial licensing was further liberalized in 1987-8. To encourage production and to provide flexibility to manufacturers to adjust their product mix to market demand, the concept of broad banding was introduced. However, CU remained almost stable, except for a slight improvement after 1988.

---

24 It is identified that this was a period of stagnant demand for manufactured products (Krishnaji, 1984), and decline in agricultural real wages (Anandraj, 1996) resulting a reduction in the demand for industrial products from the agricultural sector.

25 See Ahluwalia (1985)

During the third phase beginning the early nineties, CU figures show a slightly declining trend in the first half and thereafter an increase, though it came down again in the end-years. One of the arguments for liberalizing the industrial sector was that a more open economy provides the impetus for stimulating capacity utilization. It is worth mentioning here that the process of liberalization and macro economic stabilization is observed to involve a large decline in output in the early stages of transition. Further a considerable under-utilization of capacity may also be expected in the early stages of transition.<sup>26</sup> Our results indicate that the adoption of liberal economic policies have caused fluctuations in capacity utilization. This may be attributed to the increased role of market forces in an open economy, which triggers the demand fluctuations and the corresponding expectations which may force firms to keep part of capacity idle in order to meet future demand exigencies. It, however, requires a more rigorous analysis incorporating the anticipatory expectations (Morrison, 1985) and market imperfections, to arrive at firm conclusions, which is beyond the scope of present study.

## **VII. FACTORS AFFECTING CU**

It may be noted that the observed variations in CU over the years are in consonance with the ups and downs in the growth of the economy. It is seen that the variation in the level of gross domestic product (GDP) and the level of output in the manufacturing sector have also been relatively high during the first and third phases (Table 5) compared to that of second phase. For a rigorous understanding, we have carried out a simple regression analysis, where we regress capacity utilization on the growth of GDP and two dummy variables to capture the effect of

---

26 See Hernandez Cata (1997).

macro policy changes. The first dummy takes the value one for post 1985 period and zero otherwise, and the second one takes the value one for post 1991 period and zero otherwise. Interestingly these results are in concurrence with our observations.<sup>27</sup> While GDP, a proxy for the demand, has shown a positive and significant impact on CU, both dummy variables show no significant impact on CU. Thus the principal observation from the above analysis is that the sector witnessed a cyclical movement in the capacity utilization, which is in concurrence with the growth of the economy. This cyclical movement has been observed regardless of the changes in policy sphere, implying that CU does not show any significant response to the policy changes.

**Table 5: Variation in CU, Output and Gross Domestic Product**

Year	CU	Output	GDP
1974-84	6.53	24.91	13.42
1985-90	2.62	15.48	11.41
1991-98	4.00	20.38	14.93

Note: Figures are coefficient of variation

### *Input Prices and CU*

The framework we followed permits us to calculate the effects of input price changes on potential output and capacity utilization. The effect of variations in input prices on  $Y^*$  and CU depends on the substitutability/complementarity of variable inputs with capital (Berndt and Morrison, 1981). If the variable input and capital are Hicks-Allen

27 The regression result is  $\ln CU = -0.09338 + 0.6337(\ln GDP_t - \ln GDP_{t-1}) + 0.00522D1 - 0.0124D2$   
 (-3.57) (1.75) (0.235) (-0.720)

$R^2=0.18$ , and t ratios in parenthesis.



substitutes (complements), then the predominant effect of an increase in variable input price is to decrease (increase)  $Y^*$ ; if however, they are independent inputs, the variations in input prices do not affect  $Y^*$ . Therefore, an important way of evaluating the effect of input prices on  $Y^*$  and CU is to calculate the elasticity of optimal output with respect to input prices, i.e.  $e_{y_i} = \partial \ln Y^* / \partial \ln P_i$ . Following the approaches suggested by Brown and Christensen (1981) and Berndt and Hesse (1986), we calculate the elasticities in the following way.

We have at the minimum point of the SATC,

$$SATC = VC/Y^* + P_K \cdot K/Y^* = f(Y^*, P_p, K, T)$$

And equation (8)

$$\partial SATC / \partial Y^* = \partial f / \partial Y^* = VC(\mu_y - 1) - P_K K = 0 = f_y$$

Taking the total differential of  $f_y$

$$df_y = 0 = \frac{\partial f_y}{\partial Y^*} dY^* + \sum_i \frac{\partial f_y}{\partial P_i} dP_i + \frac{\partial f_y}{\partial K} dK + \frac{\partial f_y}{\partial T} dT \quad ; i = L, F \text{ and } M. \quad (9)$$

Setting  $dK = dT = dP_j (i \neq j) = 0$  and dividing both sides of the equation by  $dP_i$ , we get

$$\frac{\partial f_y}{\partial Y^*} \frac{dY^*}{dP_i} + \frac{\partial f_y}{\partial P_i} = 0$$

Then

$$\frac{\partial Y^*}{\partial P_i} = \frac{-\partial f_y / \partial P_i}{\partial f_y / \partial Y^*} \quad (10)$$

Now following equation (8),  $\partial f_y / \partial P_i$  and  $\partial f_y / \partial Y^*$  for the translog cost function may be derived as

$$\begin{aligned}\frac{\partial f_y}{\partial P_i} &= (\mu_y - 1)\mu_i(VC/P_i) + (VC/P_i)\beta_{yi} \\ &= (VC/P_i)[(\mu_y - 1)\mu_i + \beta_{yi}]\end{aligned}\quad (11)$$

$$\begin{aligned}\frac{\partial f_y}{\partial Y^*} &= VC[\beta_{yy}(1/Y^*)] + [(\mu_y - 1)\mu_y(VC/Y^*)] \\ &= (VC/Y^*)[\beta_{yy} + (\mu_y - 1)\mu_y]\end{aligned}$$

Substituting (11) in (10) we have,

$$\frac{dY^*}{dP_i} = -\left(\frac{Y^*}{P_i}\right) \left[ \frac{(\mu_y - 1)\mu_i + \beta_{yi}}{\beta_{yy} + (\mu_y - 1)\mu_y} \right] \quad (12)$$

Potential output elasticity with respect to  $i^{\text{th}}$  input is defined as  $e_{yi} = \partial \ln Y^* / \partial \ln P_i = (\partial Y^* / \partial P_i) (P_i / Y^*)$ ; for  $i = L, F$  and  $M$ , i.e.

$$e_{yi} = \frac{-[\beta_{yi} + (\mu_y - 1)\mu_i]}{\beta_{yy} + (\mu_y - 1)\mu_y}$$

The above result is important that it shows the substitutability/complementarity between the variable inputs and capital i.e.

$$e_{yi} = -\frac{\partial \ln K}{\partial \ln P_i}$$

For example, if the material inputs and capital are substitutes, then  $e_{ym}} < 0$ , i.e. increases in material prices, *ceteris paribus*, will reduce the capacity output level. In other words, increases in  $P_M$  would increase the firm's long run optimal  $K/Y$  ratio from, say,  $K_0/Y^*$  to  $K_1/Y^*$ , implying a smaller  $Y^*$  corresponding to the given level of capital  $K_0$ . In such a case, given current  $K$ , the larger long run  $(K/Y^*)$  ratio can be preserved by reducing current capacity output  $Y^*$  by operating on a new *SRAC* curve with minimum point to the left of the original minimum cost output level. Hence in this case, given  $K$  and  $Y$ , increases in  $P_M$  would reduce  $Y^*$  and therefore increase  $CU$  (Berndt and Hesse, 1986).

**Table 6: Estimated Potential output Elasticities with respect to inputs**

Year	$e_{yf}$	$e_{ym}$	$e_{yl}$
1973-4	0.00290	-0.00969	0.00464
1979-80	0.00201	-0.02085	0.00323
1984-5	0.00220	-0.01718	0.00387
1989-90	0.00215	-0.01781	0.00399
1994-5	0.00198	-0.01912	0.00387
1997-8	0.00143	-0.02097	0.00361

The estimated elasticities are reported in table 6. The table brings many issues of interest. It shows that the effect of increase in the price of material is to reduce the potential output. But in the case of labor and fuel the effect is positive. This may imply that the fuel and labor are long run complements to the capital. The quantitative magnitude of the

Figure 2  
Input shares in Variable cost

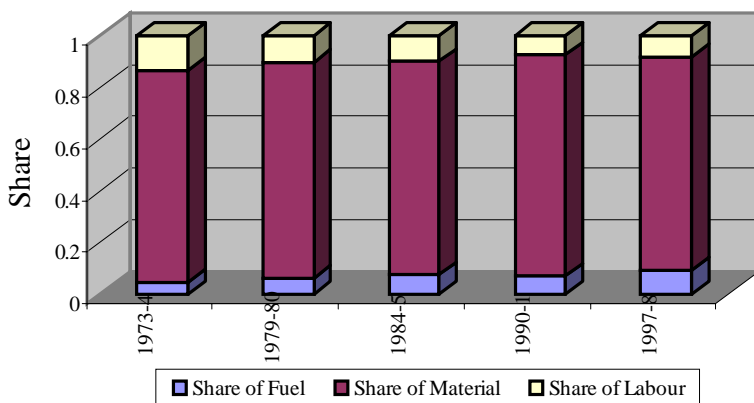
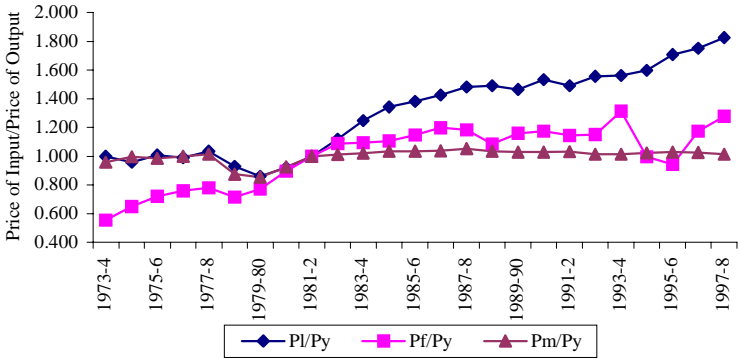


Figure 3  
Relative Input Prices, 1981-2=100



material elasticity is higher than that of the other two. This may be because of the fact that outlays on materials are much higher than that on labor and fuel. The average share of material in total variable cost is 84 percent while that of fuel and labor are only 8 per cent each (see figure 2 also). It implies that increases in the material prices have much larger impact on potential output and thereby CU than do proportional increase in wage rates and fuel prices. Thus it may be seen from the above observations that, given K and Y, the effect of changes in wage rate and fuel prices on CU is negative, while that of material is positive. It is, however, worth mentioning here that if the changes in variable input prices are easily transformed into output price, the production may not be affected by the input price changes, provided the market demand is not altered. It is seen that while the relative prices of material remained almost stable, it has been increasing in the case of fuel and labor prices with the wage rates registering a relatively high rate of increase (figure 3). That is, the input price shocks are almost transformed into output price in the case of material while it is not true with fuel prices and wage rate. Therefore, given the substitutability/

complementarity relationship between variable inputs and capital, the material price shocks are unlikely to have negative effect on CU, while fuel and labor prices are likely to have a modest negative impact. Also note that the quantitative magnitude of potential output elasticity with respect to labor price is always higher than that of fuel price implying a relatively larger effect of wage rates on CU.

The principal inference that may be drawn from the above exercise is that CU is an outcome of firms' optimization procedure depending upon simultaneous factors. We observe, on top of the findings of earlier studies, that along with demand side factors, supply side factors are also important in deciding the movements of capacity utilization.

## **VIII. IN LIEU OF CONCLUSION**

To summarize, we have examined the trends in and the factors affecting economic capacity utilization (CU) in Indian manufacturing sector over 1974-1998. The CU is estimated employing a translog variable cost function, which is estimated along with the share equations, using an iterative version of the Zellner's Seemingly Unrelated Regression Estimation (SURE) technique. The analysis reveals that the conventional installed capacity utilization measures underestimate the true economic utilization levels. Further, the Indian manufacturing sector experienced a cyclical pattern of economic capacity utilization over the period of study. It has also identified three distinct phases of economic CU movements. While phase one (1974-1984) has marked relatively wide fluctuations the phase two (1985-1990), shown more or less a stable level of utilization. A mild variant of the fluctuations of the sort witnessed in the first phase is seen to have resurfaced in the third phase (1991-1998). Interestingly, there has not been any significant correspondence between the observed phases of CU with the corresponding policy environment. While phase one is characterized

by a restrictive policy regime, phase two and three are characterized by partial and further liberalization policies. Thus, it can be said that the initiation of liberalization, which roughly coincides with the second and third phases, has shied to exert a favorable impact on CU though the stimulation of CU has been one of the major grounds for introducing liberal policy reforms in the nineties. Perhaps, this is not a surprising outcome of liberalization. For, the economic theory mentions of different possible reasons for keeping idle capacity in a competitive economy. Therefore, it can be said in lieu of conclusion that the tendency to attribute all economic outcomes in a period, which coincide with economic reforms may not match with the empirical facts. The major point emerging from the study is the significant role of supply side as well as demand side factors in affecting the level of economic capacity utilization. The impact of economic reforms *per se* is not significant though the policy changes may influence supply and demand side factors determining the level of economic capacity utilization.

**E. Abdul Azeez** *is a Doctoral Student at the Centre for Development Studies, Thiruvananthapuram. His main areas of research interests are: Industrial Organisation and Economic Reforms and its Impact.*

*Email contact: [abdul@cds.ac.in](mailto:abdul@cds.ac.in) & [eabdul75@hotmail.com](mailto:eabdul75@hotmail.com)*

## References

- Ahluwalia, I J (1985), *Industrial Growth in India – Stagnation since the Mid-Sixties*, New Delhi, Oxford University Press.
- Ahluwalia, I J (1987), “Role of Policy in Industrial Development”, in Brahmananda, PR and VR Panchamukhi (ed), *The Development Process of the Indian Economy*, Delhi, Himalaya Publishing Company
- Ahluwalia, I J (1991), *Productivity Growth in Indian Manufacturing*, New Delhi, Oxford University Press.
- Ajit, D (1993), “Capacity Utilisation in Indian Industries”, *Reserve Bank of India, Occasional Papers*, 14, (1), pp. 21-46.
- Anandraj, R (1996), Indian Industrial Growth, Anatomy of the Planning Regime, *Unpublished Ph.D. thesis submitted to the Jawaharlal Nehru University*, New Delhi, Centre for Development Studies, Trivandrum.
- Azeez, E A (1999) “Trends and Determinants of Capacity Utilisation: A Study of Indian Manufacturing under Liberalisation”, *Unpublished M.Phil Dissertation submitted to the Jawaharlal Nehru University*, New Delhi, Centre for Development Studies, Trivandrum
- Azeez, E A (2001), “Utilization of Optimal Capacity in Indian Manufacturing, 1974-96”, *Applied Economics Letters*, 9 (8), pp. 623-28.
- Berndt, E R and M A Fuss (1986), “Productivity Measurement with Adjustments for Variations in Capacity Utilization and other forms of Temporary Equilibrium”, *Journal of Econometrics*, 33 pp.7-29.
- Berndt, E R and D M Hesse (1986), “Measuring and Assessing Capacity Utilization in the Manufacturing Sectors of Nine OECD Countries”, *European Economic Review*, 30, pp. 961-89.

- Berndt, E R and C J Morrison (1981), "Capacity Utilization Measures: Underlying Economic Theory and an Alternative Approach", *American Economic Review*, Papers and Proceedings, 71, pp. 48-52.
- Bhagwati, J N and T N Srinivasan (1975), *Foreign Trade Regimes and Economic Development in India*, New York, Columbia University Press.
- Bhagwati, J N and P Desai (1970), *India: Planning for Industrialisation*, London, Oxford University Press.
- Brown R S and L R Christensen (1981), "Estimating Elasticities of Substitution in a Model of Partial Static Equilibrium: An Application to US Agriculture, 1947-1974", in Berndt and Field (ed) *Modeling and Measuring Natural Resource Substitution*, MIT press, Cambridge, MA,
- Bulow J, Geanakoplos J and P Klempner (1985), "Holding Idle Capacity to Deter Entry", *The Economic Journal*, 95, pp.178-82.
- Burange, L G (1992), "The Trends in Capacity Utilisation in Indian Manufacturing Sector", *Journal of Indian School of Political Economy*, July-Sept, pp. 445-55.
- Cassel, J M (1937), "Excess Capacity and Monopolistic Competition", *Quarterly Journal of Economics*, 51, pp. 426-43.
- Christiano, L J (1981), "A Survey of Measures of Capacity Utilization", *IMF Staff Papers*, 28, pp. 144-99.
- Dadi, M M, and S R Hashim (1973), *Capital Output Ratios in Indian Manufacturing, 1946-64*, M S University of Baroda.
- Dixit, A (1980), "The Role of Investment in Entry-deterrence", *The Economic Journal*, 90, pp. 95-106.
- Dreze, J H (1999), "On the Macroeconomics of Uncertainty and Incomplete Markets", *Presidential Address for the Twelfth World*



*Congress of the International Economic Association, Buenos-Aires, August 1999.*

- Goldar, B N, and V S Ranganathan (1991), "Capacity Utilisation in Indian industries", *The Indian Economic Journal*, 39 (2), pp. 82-90.
- Government of India, *Annual Survey of Industries*, Various Issues, New Delhi, Central Statistical Organisation, Ministry of Planning.
- Government of India, *Input Output Transaction Matrix*, New Delhi, Ministry of Planning.
- Hernandez-Cata, E (1997), "Liberalization and Behavior of Output during the Transition from Plan to Market", *IMF Staff papers*, 44 (4), pp. 405-29.
- Hickman, B G (1964), "On a new Method of Capacity Estimation", *Journal of American Statistical Association*, 59, pp. 529-49.
- Hulten C R (1986), "Productivity Change, Capacity Utilization, and the Sources of Efficiency Growth", *Journal of Econometrics*, 33, pp.31-50.
- Khullar (1991), *Economic Reforms in India, 1985-90: The Case of the Elephant and Seven Blind Men*, Boston University.
- Kmenta, J. and Gilbert, R F (1968), "Small Sample Properties of Alternative Estimators of Seemingly Unrelated Regressions", *Journal of American Statistical Association*, 63, 1180-200.
- Krishnaji, N (1984), "The Demand Constraint: A Note on the Role of Food Grain Prices and Income Inequality", *Economic and Political Weekly*, August, pp. 1261-66
- Lau, L J (1976), "A Characterization of the Normalized Restricted Profit Function", *Journal of Economic Theory*, 12, pp. 131-63.
- Liberman, M B (1987), "Excess Capacity as a Barrier to Entry: An Empirical Appraisal", *Journal of Industrial Economics*, 35, pp. 607-627.
- Little, I M D et al (1970), *Industry and Trade in Some Developing Countries: A Comparative Study*, Oxford University Press, Oxford.

- Morrison, C J (1986), "Productivity Measurement with Non-static Expectations and Varying Capacity Utilization: An Integrated Approach, *Journal of Econometrics*, 33, pp. 51-74
- Morrison, C J (1985), "On the Economic Interpretation and Measurement of Optimal Capacity Utilization with Anticipatory Expectation", *Review of Economic Studies*, 52 (169), pp.295-310.
- Nelson, R A (1989), "On the Measurement of Capacity Utilization", *The Journal of Industrial Economics*, 37, pp.273-86.
- Seth, V K (1998), "Economic Reforms and Capacity Utilisation in Indian Industry", *Productivity*, 39 (3), pp.391-98.
- Solocum, N (1970), *Underutilised Industrial Capacity in India*, New Delhi, USAID.
- Spence, A M (1977), "Entry, Capacity, Investment and Oligopolistic Pricing", *The Bell Journal of Economics*, 8, pp 534-44.
- Srinivasan, P V (1992), "Excess Capacities in Indian Industries, Supply or Demand Determined?" *Economic and Political Weekly*, November 7, pp. 2437-41.
- Srivastava, V (1996), *Liberalisation Productivity and Competition: A Panel Study of Indian Manufacturing*, New Delhi, Oxford University Press.
- Varshist, D C (1984), "Substitution Possibilities and Price Sensitivity of Energy Demand in Indian Manufacturing", *Indian Economic Journal*, 32, (1), 84-97.
- Winston, G C (1974), "The Theory of Capital Utilization and Idleness", *Journal of Economic Literature*, 12, pp. 1301-20.
- World Bank (1989), *India: An Industrializing Economy in Transition*, Washington, World Bank.
- Zellner, A (1962), "An Efficient Method of Estimating Seemingly Unrelated Regression and Tests for Aggregation Bias", *Journal of the American Statistical Association*, 57, No 298, pp.348-68.

## CENTRE FOR DEVELOPMENT STUDIES

### LIST OF WORKING PAPERS

#### *[New Series]*

The Working Paper Series was initiated in 1971. A new series was started in 1996 from WP. 270 onwards. Working papers beginning from 279 can now be downloaded from the Centre's website ([www.cds.edu](http://www.cds.edu))

- W.P. 270** **ACHIN CHAKRABORTY** *On the Possibility of a Weighting System for Functionings* December 1996
- W.P. 271** **SRIJIT MISHRA** *Production and Grain Drain in two inland Regions of Orissa* December 1996
- W.P. 272** **SUNIL MANI** *Divestment and Public Sector Enterprise Reforms, Indian Experience Since 1991* February 1997
- W.P. 273** **ROBERT E. EVENSON, K.J. JOSEPH** *Foreign Technology Licensing in Indian Industry : An econometric analysis of the choice of partners, terms of contract and the effect on licensees' performance* March 1997
- W.P. 274** **K. PUSHANGADAN, G. MURUGAN** *User Financing & Collective action: Relevance sustainable Rural water supply in India.* March 1997.
- W.P. 275** **G. OMKARNATH** *Capabilities and the process of Development* March 1997
- W. P. 276** **V. SANTHAKUMAR** *Institutional Lock-in in Natural Resource Management: The Case of Water Resources in Kerala,* April 1997.
- W. P. 277** **PRADEEP KUMAR PANDA** *Living Arrangements of the Elderly in Rural Orissa,* May 1997.
- W. P. 278** **PRADEEP KUMAR PANDA** *The Effects of Safe Drinking Water and Sanitation on Diarrhoeal Diseases Among Children in Rural Orissa,* May 1997.
- W.P. 279** **U.S. MISRA, MALA RAMANATHAN, S. IRUDAYA RAJAN** *Induced Abortion Potential Among Indian Women,* August 1997.

- W.P. 280 PRADEEP KUMAR PANDA** *Female Headship, Poverty and Child Welfare : A Study of Rural Orissa, India*, August 1997.
- W.P. 281 SUNIL MANI** *Government Intervention in Industrial R & D, Some Lessons from the International Experience for India*, August 1997.
- W.P. 282 S. IRUDAYA RAJAN, K. C. ZACHARIAH** *Long Term Implications of Low Fertility in Kerala*, October 1997.
- W.P. 283 INDRANI CHAKRABORTY** *Living Standard and Economic Growth: A fresh Look at the Relationship Through the Non- Parametric Approach*, October 1997.
- W.P. 284 K. P. KANNAN** *Political Economy of Labour and Development in Kerala*, January 1998.
- W.P. 285 V. SANTHAKUMAR** *Inefficiency and Institutional Issues in the Provision of Merit Goods*, February 1998.
- W.P. 286 ACHIN CHAKRABORTY** *The Irrelevance of Methodology and the Art of the Possible : Reading Sen and Hirschman*, February 1998.
- W.P. 287 K. PUSHANGADAN, G. MURUGAN** *Pricing with Changing Welfare Criterion: An Application of Ramsey- Wilson Model to Urban Water Supply*, March 1998.
- W.P. 288 S. SUDHA, S. IRUDAYA RAJAN** *Intensifying Masculinity of Sex Ratios in India : New Evidence 1981-1991*, May 1998.
- W.P. 289 JOHN KURIEN** *Small Scale Fisheries in the Context of Globalisation*, October 1998.
- W.P. 290 CHRISTOPHE Z. GUILMOTO, S. IRUDAYA RAJAN** *Regional Heterogeneity and Fertility Behaviour in India*, November 1998.
- W.P. 291 P. K. MICHAEL THARAKAN** *Coffee, Tea or Pepper? Factors Affecting Choice of Crops by Agro-Entrepreneurs in Nineteenth Century South-West India*, November 1998
- W.P. 292 PRADEEP KUMAR PANDA** *Poverty and young Women's Employment: Linkages in Kerala*, February, 1999.
- W.P. 293 MRIDUL EAPEN** *Economic Diversification In Kerala : A Spatial Analysis*, April, 1999.
- W.P. 294 K. P. KANNAN** *Poverty Alleviation as Advancing Basic Human Capabilities: Kerala's Achievements Compared*, May, 1999.
- W.P. 295 N. SHANTA AND J. DENNIS RAJA KUMAR** *Corporate Statistics: The Missing Numbers*, May, 1999.
- W.P. 296 P.K. MICHAEL THARAKAN AND K. NAVANEETHAM** *Population Projection and Policy Implications for Education:A Discussion with Reference to Kerala*, July, 1999.

- W.P. 297** **K.C. ZACHARIAH, E. T. MATHEW, S. IRUDAYA RAJAN** *Impact of Migration on Kerala's Economy and Society*, July, 1999.
- W.P. 298** **D. NARAYANA, K. K. HARI KURUP**, *Decentralisation of the Health Care Sector in Kerala : Some Issues*, January, 2000.
- W.P. 299** **JOHN KURIEN** *Factoring Social and Cultural Dimensions into Food and Livelihood Security Issues of Marine Fisheries; A Case Study of Kerala State, India*, February, 2000.
- W.P. 300** **D. NARAYANA** *Banking Sector Reforms and the Emerging Inequalities in Commercial Credit Deployment in India*, March, 2000.
- W.P. 301** **P. L. BEENA** *An Analysis of Mergers in the Private Corporate Sector in India*, March, 2000.
- W.P. 302** **K. PUSHPANGADAN, G. MURUGAN**, *Gender Bias in a Marginalised Community: A Study of Fisherfolk in Coastal Kerala*, May 2000.
- W.P. 303** **K. C. ZACHARIAH, E. T. MATHEW, S. IRUDAYA RAJAN**, *Socio-Economic and Demographic Consequences of Migration in Kerala*, May 2000.
- W.P. 304** **K. P. KANNAN**, *Food Security in a Regional Perspective; A View from 'Food Deficit' Kerala*, July 2000.
- W.P. 305** **K. N. HARILAL, K.J. JOSEPH**, *Stagnation and Revival of Kerala Economy: An Open Economy Perspective*, August 2000.
- W.P. 306** **S. IRUDAYA RAJAN**, *Home Away From Home: A Survey of Oldage Homes and inmates in Kerala*, August 2000.
- W.P. 307** **K. NAVANEETHAM, A. DHARMALINGAM**, *Utilization of Maternal Health Care Services in South India*, October 2000.
- W.P. 308** **K. P. KANNAN, N. VIJAYAMOHANAN PILLAI**, *Plight of the Power Sector in India : SEBs and their Saga of Inefficiency* November 2000.
- W.P. 309** **V. SANTHAKUMAR AND ACHIN CHAKRABORTY**, *Environmental Valuation and its Implications on the Costs and Benefits of a Hydroelectric Project in Kerala, India*, November 2000.
- W.P. 310** **K. K. SUBRAHMANYAN. E. ABDUL AZEEZ**, *Industrial Growth In Kerala: Trends And Explanations* November 2000
- W.P. 311** **INDRANI CHAKRABORTY** *Economic Reforms, Capital Inflows and Macro Economic Impact in India*, January 2001
- W.P. 312** **N. VIJAYAMOHANAN PILLAI** *Electricity Demand Analysis and Forecasting –The Tradition is Questioned*, February 2001

- W.P. 313 VEERAMANI. C** *India's Intra-Industry Trade Under Economic Liberalization: Trends and Country Specific Factors*, March 2001
- W.P. 314 U.S.MISHRA AND MALA RAMANATHAN** *Delivery Complications and Determinants of Caesarean Section Rates in India - An Analysis of National Family Health Surveys, 1992-93*, March 2001.
- W.P. 315 ACHIN CHAKRABORTY** *The Concept and Measurement of Group Inequality*, May 2001.
- W.P. 316 K. P. KANNAN AND N. VIJAYAMOHANAN PILLAI** *The Political Economy of Public Utilities: A Study of the Indian Power Sector*, June 2001.
- W.P. 317 K. J. JOSEPH AND K. N. HARILAL** *India's IT Export Boom: Challenges Ahead*. July 2001.
- W.P. 318 JOHN KURIEN AND ANTONY TO PAUL** *Social Security Nets for Marine Fisheries-The growth and Changing Composition of Social Security Programmes in the Fisheries Sector of Kerala State, India*. September 2001.
- W.P. 319 K. C. ZACHARIAH, P. R. GOPINATHAN NAIR AND S. IRUDAYA RAJAN** *Return Emigrants in Kerala: Rehabilitation Problems and Development Potential*. October 2001
- W.P. 320 N. VIJAYAMOHANAN PILLAI, K. P. KANNAN,** *Time and Cost Over-runs of the Power Projects in Kerala*, November 2001.
- W.P. 321 VEERAMANI C.** *Analysing Trade Flows and Industrial Structure of India: The Question of Data Harmonisation*, November 2001.
- W.P. 322 K. C. ZACHARIAH,** *The Syrian Christians of Kerala: Demographic and Socioeconomic Transition in the Twentieth Century*, November 2001.
- W.P. 323 V. K. RAMACHANDRAN, MADHURA SWAMINATHAN, VIKAS RAWAL,** *How have Hired Workers Fared? A Case Study of Women Workers from an Indian Village, 1977 to 1999*. December 2001.
- W.P. 324 K. P. KANNAN, N. VIJAYAMOHANAN PILLAI,** *The Aetiology of the Inefficiency Syndrome in the Indian Power Sector Main Issues and Conclusions of a Study*. March 2002.
- W.P. 325 N. VIJAYAMOHANAN PILLAI,** *Reliability and Rationing cost in a Power System*. March 2002.

- W.P. 326 K.C. ZACHARIAH, B.A. PRAKASH, S. IRUDAYA RAJAN,** *Gulf Migration Study : Employment, Wages and Working Conditions of Kerala Emigrants in the United Arab Emirates.* March 2002.
- W.P. 327 K. RAVI RAMAN,** *Bondage in Freedom, Colonial Plantations in Southern India c. 1797-1947.* March 2002.
- W.P. 328 K. P. KANNAN, K. S. HARI,** *Kerala's Gulf Connection Emigration, Remittances and their Macroeconomic Impact 1972-2000.* March 2002.
- W.P. 329 J. DEVIKA,** *Imagining Women's Social Space in Early Modern Keralam.* April 2002.
- W.P. 330 ACHIN CHAKRABORTY,** *The Rhetoric of Disagreement in Reform Debates* April 2002.
- W.P. 331 SURESH BABU,** *Economic Reforms and Entry Barriers in Indian Manufacturing.* April 2002.
- W.P. 332 K. P. KANNAN,** *The Welfare Fund Model of Social Security for Informal Sector Workers: The Kerala Experience.* April 2002.
- W.P. 333 K. PUSHANGADAN** *Social Returns from Drinking Water, Sanitation and Hygiene Education: A Case Study of Two Coastal Villages in Kerala,* May 2002.

## BOOKS PUBLISHED BY THE CDS

### **Health Status of Kerala**

P G K Panikar and C R Soman

CDS. 1984. pp 159, Hardcover , Rs.100/ \$ 11 & Paperback, Rs. 75/ \$ 10

### **Bovine Economy in India**

A Vaidyanathan

Oxford & IBH. 1988. pp 209, Hardcover, Rs. 96/ \$ 11

### **Essays in Federal Financial Relations**

I S Gulati and K K George

Oxford and IBH. 1988. pp 172, Hardcover, Rs. 82/ \$ 10

### **Land Transfers and Family Partitioning**

D Rajasekhar

Oxford and IBH. 1988. pp 90, Hardcover, Rs. 66/ \$ 10

### **Ecology or Economics in Cardamom Development (No Stock)**

K N Nair, D Narayana and P Sivanandan

Oxford & IBH. 1989. pp 99, Paperback, Rs. 75/ \$ 10

### **The Motor Vehicle Industry in India (Growth within a Regulatory Environment)**

D Narayana

Oxford & IBH. 1989. pp 99, Paperback, Rs. 75/ \$ 10

### **The Pepper Economy of India (No Stock)**

P S George, K N Nair and K Pushpangadan

Oxford & IBH. 1989. pp 88, Paperback, Rs. 65/ \$ 10

### **Livestock Economy of Kerala**

P S George and K N Nair

CDS. 1990. pp 189, Hardcover, Rs. 95/ \$ 10

### **Caste and The Agrarian Structure**

T K Sundari

Oxford & IBH. 1991. pp 175, Paperback, Rs.125/ \$ 14



**Coconut Development in Kerala: Ex-post Evaluation**

D Narayana, K N Nair, P Sivanandan, N Shanta and  
G N Rao

CDS. 1991. pp 139, Paperback, Rs.40/ \$ 10

**Trends in Private Corporate Savings**

N Shanta

CDS. 1991. pp 90, Paperback, Rs. 25/ \$ 10

**International Environment, Multinational Corporations and Drug Policy**

P G K Panikar, P Mohanan Pillai & T K Sundari

CDS. 1992. pp 77, Paperback, Rs.40/ \$ 10

**Rural Household Savings and Investment: A Study of Some Selected Villages**

P G K Panikar, P Mohanan Pillai & T K Sundari

CDS. 1992. pp 144, Paperback, Rs. 50/ \$ 10

**Indian Industrialization: Structure and Policy Issues. (No Stock)**

Arun Ghosh, K K Subrahmanian, Mridul Eapen & Haseeb A Drabu  
(EDs).

OUP. 1992. pp 364, Hardcover, Rs.350/ \$ 40

**Limits To Kerala Model of Development: An Analysis of Fiscal Crisis and Its Implications.**

K K George

CDS. 1999 (2<sup>nd</sup> edition) pp 128, Paperback, Rs. 160/ \$ 18

**Industrial Concentration and Economic Behaviour: Case Study of Indian Tyre Industry**

Sunil Mani

CDS. 1993. pp 311, Hardcover, Rs. 300/ \$ 34

**Peasant Economy and The Sugar Cooperative: A Study Of The Aska Region in Orissa**

Keshabananda Das

CDS. 1993. pp 146, Paperback, Rs.140/ \$ 16

**Urban Process in Kerala 1900-1981**

T T Sreekumar

CDS. 1993. pp 86, Paperback, Rs.100/ \$ 11

**Impact of External Transfers on the Regional Economy of Kerala**

P R Gopinathan Nair &amp; P Mohanan Pillai

CDS 1994. pp 36, Paperback, Rs.30/ \$ 10

**Demographic Transition in Kerala in the 1980s**

K C Zachariah, S Irudaya Rajan, P S Sarma, K Navaneetham,

P S Gopinathan Nair &amp; U S Mishra,

CDS. 1999 (2<sup>nd</sup> Edition) pp 305, Paperback, Rs.250/ \$ 28**Growth of Firms in Indian Manufacturing Industry**

N Shanta

CDS. 1994. pp 228, Hardcover, Rs. 250/ \$ 28

**Floods and Flood Control Policies: an Analysis With Reference to the Mahanadi Delta in Orissa**

Sadhana Satapathy

CDS. 1993 pp 98, Paperback, Rs. 110/\$ 12

**Growth of Market Towns in Andhra: A Study of the Rayalseema Region C 1900-C.1945**

Namerta

CDS. 1994. pp 186, Paperback, Rs.125/ \$ 14

**Growth of Education in Andhra - A Long Run View**

C Upendranath

CDS. 1994. pp 158, Paperback, Rs. 135/ \$ 15

**CDS M.Phil Theses (1975/76-1989/90): A Review Vol.1**

G N Rao

CDS. 1996. pp 162, Paperback, Rs. 155/ \$ 18

**Trends In Agricultural Wages in Kerala 1960-1990**

A A Baby

CDS. 1996. pp 83, Paperback, Rs. 105/ \$ 12

**CDS M.Phil Theses (1990/91-1993/94): A Review Vol.II**

T T Sreekumar

CDS. 1996. pp 99, Paperback, Rs. 120/\$ 14

**Industrialisation in Kerala: Status of Current Research and Future Issues**

P Mohanan Pillai &amp; N Shanta

CDS. 1997. pp 74, Paperback, Rs. 110/ \$ 12

**Health, Inequality and Welfare Economics**

Amartya Sen

CDS, 1996. pp 26, Paperback, Rs. 70/ \$ 10

**Property Rights, Resource Management & Governance: Crafting An Institutional Framework for Global Marine Fisheries**

John Kurien

CDS &amp; SIFFS, 1998. pp 56, Paperback, Rs. 50/ \$10

**Agrarian Transition Under Colonialism: Study of A Semi Arid Region of Andhra, C.1860-1900**

GN Rao

CDS, 1999. pp 133, Paperback, Rs. 170/ \$19

**Land Relations and Agrarian Development in India: A Comparative Historical Study of Regional Variations**

Sakti Padhi

CDS, 1999. pp 335, Hardcover, Rs. 425/\$48

**Poverty, Unemployment and Development Policy : A Case Study of Selected Issues With Reference to Kerala**

United Nations, 2000 (reprint), pp 235

(available for sale in India only), Rs. 275

**Performance of Industrial Clusters: A Comparative Study of Pump Manufacturing Cluster in Coimbatore (Tamil Nadu) & Rubber Footwear Cluster in Kottayam (Kerala)**

P. Mohanan Pillai

CDS, 2001, pp 158, Paperback, Rs. 175/\$18

**Kerala's Gulf Connection: CDS Studies on International Labour Migration from Kerala State in India**

K.C. Zachariah, K. P. Kannan, S. Irudaya Rajan (eds)

CDS, 2002, pp 232, Hardcover, Rs. 250/\$25

**Plight of the Power Sector in India: Inefficiency, Reform and Political Economy (forthcoming)**

K.P. Kannan and N. Vijayamohanan Pillai

CDS, 2002, Rs. 400/\$40





This work is licensed under a  
Creative Commons  
Attribution – NonCommercial - NoDerivs 3.0 Licence.

To view a copy of the licence please see:  
<http://creativecommons.org/licenses/by-nc-nd/3.0/>