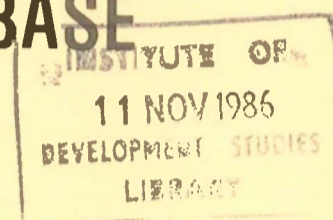


OPERATING MANUAL FOR THE UNIVERSITY OF NATAL ECONOMIC DATA BASE



by
MICHAEL McGRATH
and
RICHARD SIMSON

Occasional Paper No. 16

ERU



Economic Research Unit
University of Natal
DURBAN

1985

Price: R3,50

OPERATING MANUAL FOR THE
UNIVERSITY OF NATAL
ECONOMIC DATA BASE

by

MICHAEL McGRATH

and

RICHARD SIMSON

OCCASIONAL PAPER NO. 16

Economic Research Unit
University of Natal, Durban
July 1985

ISBN 0 86980 458 8

© 1985, Economic Research Unit, University of Natal

TABLE OF CONTENTS

	Page
1 Introduction	1
2 Accessing and Using SORITEC	3
3 Gaining Entry to the Data Base	18
4 Directory of Files and Elements	23
5 Bibliography	113

PREFACE

In 1983 the University of Natal became the first institution in South Africa to purchase SORITEC, a sophisticated, yet user-friendly, computer package, developed specifically for the purpose of econometric modelling. The data base which is described in this manual has been constructed to afford SORITEC users at the University of Natal easy access to a wide range of economic and social statistics. This manual also provides a guide to the more important operating statements in the SORITEC package.

The data base has been developed primarily for use by students, although we hope that some of our colleagues may find it useful. It provides access to a wide variety of annual statistical data for the South African economy for the period 1960 - 1980. We hope that students at the University of Natal will not only use the data base for required class assignments, but that they will also use it to satisfy their curiosity about economic relationships and econometric procedures.

The authors, Professor Mike McGrath and Mr Richard Simson, are respectively Associate Professor and Junior Lecturer in the Department of Economics at the University of Natal, Durban. They wish to acknowledge their thanks to Craig Dougall, who diligently entered the many thousands of items of data into the University's computer while working as a research assistant during December 1983 and January 1984, and to Professors George Trotter and Gavin Maasdorp who commented on the draft. Any errors or inadequacies which remain are, however, wholly the responsibility of the authors. Lynn Kirkwood also deserves our thanks for her patient and efficient work on the word processor.

The creation of the data base was funded by a grant from the Economic Research Unit of the University of Natal.

The data base will be extended and augmented as new data become available. We urge users to report any difficulties which they encounter, and we will welcome any suggestions about data which might be added, or about operating procedures.

July 1985

MMcG
RS

1 INTRODUCTION

The data base which is described in this manual has been prepared to complement the SORITEC package on the University of Natal's Sperry 1100 computer. Unfortunately, it can only be accessed through the Sperry 1100 at the University in Durban, or Pietermaritzburg.

The data base covers a wide spectrum of economic and social statistics for the South African economy. The variable listing of Section 4 shows that it contains time series data on more than 800 variables drawn from the published sources of Central Statistical Services, and the South African Reserve Bank. Annual data are provided for most variables for the 21 year period between 1960 - 1980, and every effort has been made to ensure that the definitions of variables are internally consistent throughout the period covered.

The aim of the data base is to make annual time series data, relating to the South African economy, readily available for use on the SORITEC package. A guide to accessing the SORITEC package is given in Section 2 of this manual, and this section also contains a brief description of some of the SORITEC programme's elementary operating commands. Section 3 explains the procedures which must be adopted in order to access the data base, and Section 4 contains the file and element listings of the data base.

By using SORITEC, and this data base, statistically sophisticated relationships can be generated with remarkably little effort. Some users might even be tempted to take appropriate time series variables in the data base, and use SORITEC's regression facility to produce numerous differently specified equations, choosing the best fitting equation as the one giving the best explanation of the dependent variable.(1) If at first success is not attained, resort may be made to altering time lags on the variables, and this type of manipulation has been claimed to allow the researcher to "prove" almost anything.(2)

Some cautionary remarks must be made about econometrics of this type. Different schools of economic thought make different assumptions about causality. Thus, Keynesians might make the size of the public debt paramount in their macro-models, while in Monetarist models the money supply would be given foremost importance. These diverse views illustrate that the theoretical and econometric problems of identifying causal relationships in economics will always be severe, and often several different hypotheses are quite consistent with the same set of data. One only has to refer to the numerous studies of inflation to illustrate this point. It appears, even in the same economy and the same period, as though econometric support can be found for almost every theory of inflation. The problem is that many variables move together with the price level, and consequently there are many plausible sets of independent variables which can produce equations with statistically good fits.

(1) See Leamer, pp 31-43.
(2) Kuttner, p 78.

The predictive powers of most econometric models are limited by the fact that there are many more variables than they encompass, and often even variables in the model can be unpredictably altered at the discretion of policy makers, or by other actors in the economic system. Kuttner argues that econometric macroeconomic models have performed poorly because :

"In recent years the major influences on macroeconomic climate have been external variables (the OPEC price increase, for example) and structural changes in the system (the globalization of technology and finance). Further an econometric model cannot read the mind of the Federal Reserve Board or Congress".(3)

Further, the data on which many econometric studies are based are extremely weak, and as Morgenstern has convincingly illustrated, economic data often contain errors of unknown signs and magnitudes.(4) Often the econometric techniques which are used are far more sophisticated than the data to which they are being applied. Leontief sums up the weaknesses of economic data relative to the strengths of the econometric techniques which are used, as follows : "... in all too many instances statistical analysis is performed on a set of data whose exact meaning and validity are unknown to the author or rather so well known to him that he warns the reader not to take the material conclusions of the whole 'exercise' seriously".(5)

These comments are not intended to be derisively directed towards econometrics. Rather, it is the purpose of this data base to encourage applied econometric analysis at the University of Natal. However, the comments should be seen as a warning that econometrics will itself not provide all the answers. Sound economic research will always require a thorough understanding of the definitions, and the limitations of the data which are to be used. Moreover, econometric research should follow from both the hypotheses of economic theory, and a detailed understanding of the institutional background in the market or sector which is under investigation.

-
- (3) Morgenstern's cautionary remarks should be read by all aspiring economic researchers.
(4) Kuttner, p 77.
(5) Leontief, pp 3-7.

2 ACCESSING AND USING SORITEC

2.1 Accessing SORITEC

In order to access SORITEC on the Sperry 1100 through a terminal, press the Control key (abbreviated CTRL) and the letter E key simultaneously, and then press the key marked RETURN.

The terminal will respond with the message

```
* * * * *  
*  
*>ENTER USERID/PASSWORD  
*  
* * * * *
```

This you do by typing, IN CAPITAL LETTERS your

USERID/X

and follow this by pressing the key marked RETURN.

Wait for a "bleep" and a > will appear on screen, as shown below.

```
* * * * *  
*  
*>  
*  
* * * * *
```

The Sperry is now ready to access SORITEC. This is done by typing

```
* * * * *  
*  
*@NATAL*PACKAGE.SORITEC  
*  
* * * * *
```

Follow this by pressing the RETURN key.

Notice there must be no spaces between the @ and the letter C in SORITEC. The @ and * are typed by holding down the key marked SHIFT at the same time as pressing the key marked with the @ or *.

Again wait for the > to appear on the screen, and type HELLO.

```
* * * * *  
*  
*>HELLO  
*  
* * * * *
```

Then press RETURN.

Note that the RETURN key must be depressed every time a command is to be transmitted to SORITEC.

You have now gained access to SORITEC, and the package knows that it is being used interactively.

Summary of Commands

Press keys CTRL E simultaneously; and then follow

```
USERID/X
@NATAL*PACKAGE.SORITEC
HELLO
```

2.2 Operating SORITEC

This section describes the operation of SORITEC when the user enters data through the terminal.

2.2.1 Data Manipulation

The most common data manipulation commands are

```
O    USE    - Selects observations;
O    FILL   - Defines time series observations;
O    COMPUTE - Data transformation.
```

2.2.1.1 USE - Selects Observations

The USE command allows a user to store names containing different numbers of observations and to associate data from different names. The command must be followed by two integers defining the range of observations which are to be manipulated. For example, if there are 21 observations in a variable and it is desired to use all of them, then the command is

```
O    USE 1 21
```

If only the last 5 observations are required the command is

```
O    USE 17 21
```

Note that the range must

```
O    never be zero or negative;
O    include only two integers;
O    the second must be greater than the first.
```

2.2.1.2 FILL - Defines Time Series Observations

This is the data entry command. It can be followed by 100 arguments,

or pieces of information. The first is the name which is given to the data. The next 99 are the data values.

```
* * * * *
*
*           Example
*
*USE 1 4
*FILL MONEY 4648 5133 6198 8398
*
* * * * *
```

Any subsequent command that uses MONEY would result in SORITEC recalling the data. The name given in a FILL command must

- O not exceed eight characters;
- O consist of only numerals and letters;
- O begin with a letter and have no internal blanks.

When using the FILL command if column 72 is reached a "bleep" will be heard. This indicates that the last column has been reached. If data still have to be entered the ampersand (&) must be used. The & is placed at the end of the line to be continued. The first character of the next line will then be placed next to the last character of the preceding line.

```
* * * * *
*
*           Example
*
*Y = X1+X2+&
*X3+X4
*
*is the same as
*Y = X1+X2+X3+X4
*
*FILL A 1 2 &
*3 4
*
*is the same as
*FILL A 1 2 3 4
*
* * * * *
```

2.2.1.3 COMPUTE - Data Transformation

This command comprises the word COMPUTE and any acceptable SORITEC transformation expression. The format of the command is COMPUTE followed by the desired equation.

```

* * * * *
*
*                               Example
*
*USE 1 5
*FILL CONSUMP 52 64 73 85 90
*FILL INCOME 65 80 91 106 113
*COMPUTE APC=CONSUMP/INCOME
*PRINT CONSUMP INCOME APC
*
* * * * *

```

The print which results produces :

	CONSUMP	INCOME	APC
1	52	65	0.800000
2	64	80	0.800000
3	73	91	0.802198
4	85	106	0.801887
5	90	113	0.796460
	1	2	3

Attached to the COMPUTE command is an equation. All equations have a name (in the example above it was APC) in which the results are stored. In addition to the equals sign, which must be included in the command, the following symbols perform mathematical operations:

```

0      +  add
0      -  subtract
0      *  multiply
0      /  divide
0      ** raise to a power
0      (  open parenthesis
0      )  close parenthesis

```

Two symbols must never occur in sequence, but must be separated by parenthesis. For example :

```

0      A-B    is acceptable
0      A+-B   is not acceptable
0      A**(-B) is acceptable

```

Normal arithmetic conventions are followed in SORITEC, ie, formulae in parenthesis are calculated first, then **, *, /, and finally + or - are evaluated. The number of open and closed parentheses must be equal.

Note that:

```

0      *,/,** cannot be used immediately after (.
0      No symbol may occur immediately before ).

```

The following functions are available:

```
0      LOG      natural logarithm
0      ALOG     natural logarithm
0      LN       natural logarithm
0      L10      logarithm to base 10
0      ALOG10   logarithm to base 10
0      EXP      e raised to a power
0      ABS      absolute value
0      SIN      sine
0      COS      cosine
0      TAN      tangent
0      ASIN     arcsine
0      ACOS     arccosine
0      ATAN     arctangent
0      ROUND    round to nearest integer
0      TRUNC    truncate fractional part
```

2.2.2 Lagged Variables

A lagged variable can be specified in SORITEC by following the variable with a negative integer in parentheses, that is (-1), or (-2), etc.

The lag is determined by the size of the integer in parentheses.

Example

```
0      INCOME(-1) lags the variable by one period;
0      PRICE(-2)  lags the price variable by two periods;
0      INTEREST(-3) lags the interest variable by three
                    periods.
```

If a lagged variable is needed, the USE command must be changed to account for the lag, because data cannot be drawn from outside the bounds of the number of available observations. Therefore for a single period lag, the command should be changed from:

```
0      USE 1 21
      to
0      USE 2 21
```

For a two-period lag the command is

```
0      USE 3 21
```

An example can be easily found in the commands required to estimate Brown's model of the consumption function.

2.3.2 PLOT - Multi-variable Plot

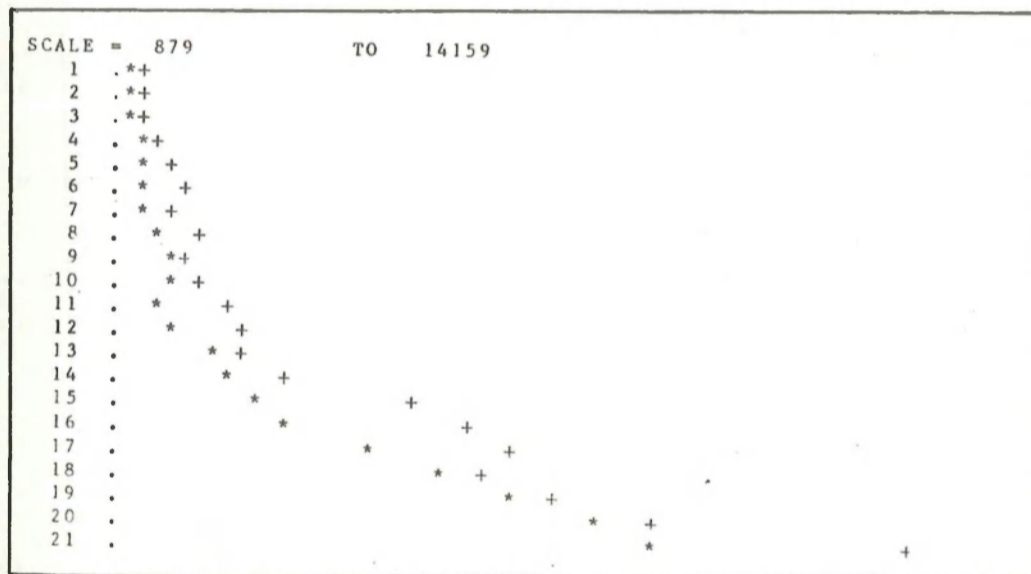
This command gives a plot of observations of up to nine elements or names. To differentiate names, plotted points are given symbols. The first item after PLOT must be a name or element. The second must be the plotting symbol.

```
*****  
*  
*                               Example                               *  
*  
*PLOT BPEXP * BPIMP +  
*  
*****
```

Permissible symbols which can be used for plotting are:

O Letters A to Z;
O Integers 0 to 9;
O Symbols +, -, *, /, =.

Example



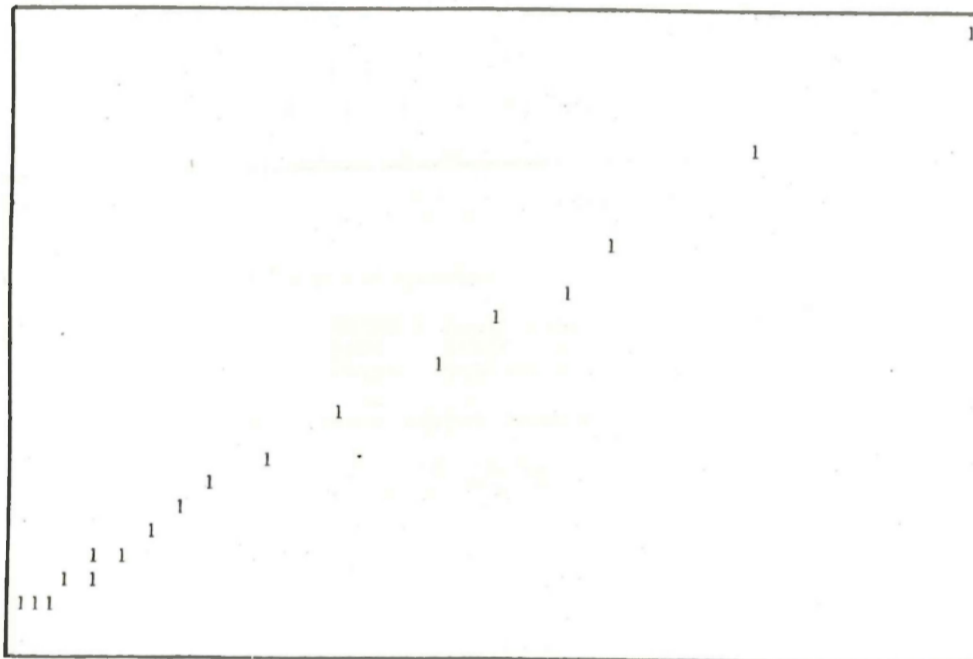
In the example above the absolute value of BPIMP was plotted.

2.3.3 GRAPH - Scatter Diagram of Two Elements

This command will show the relationship between two elements or names. The first element after the GRAPH command is placed on the vertical or Y-axis and the second is placed on the horizontal or X-axis.

```
*****  
*  
*                               Example                               *  
*  
*GRAPH PVTCEXP GDE                                                    *  
*  
*****
```

```
GDE      HORIZONTAL RANGE=  5327      55675  
PVTCEXP  VERTICAL RANGE=   3475      30779
```



2.4 Statistical Operations

Various statistical operations are available. These are executed through the statistical command followed by two arguments. The first is the particular statistic to be estimated, and the second is the variable from which the statistic is to be estimated.

The operations include:

0	CV	coefficient of variation
0	DEV	standard deviation
0	KURTOSIS	kurtosis
0	MEAN	arithmetic mean
0	RMS	root mean square
0	SKEWNESS	skewness of a variable
0	SUM	arithmetic sum
0	VAR	sample variance

```
*****
*
*                               Example
*
*USE 1 21
*MEAN AVR INCOME
*PRINT AVR
*
*****
```

In the example above AVR contains the mean of the observations in the vector INCOME.

2.5 Regression

2.5.1 Ordinary Least Squares Regression

Ordinary least squares regression is performed by using the command REGRESS. The dependent variable name is entered after the REGRESS command, followed by the independent variables.

```
*****
*
*                               Example
*
*REGRESS Y X1 X2 X3
*
*****
```

More detailed output can be generated using the on-off options.

2.5.2 On-off Options

Additional information can be obtained when using the REGRESS command. This information is optional, and is called by using the ON command prior to the REGRESS command. This command is of the form:

If this regression gave a DW (Durbin-Watson) statistic that showed the presence of serial correlation, it can be removed by using the Cochrane-Orcutt (CORC) or the Hildreth-Lu (HILU) procedures.

When using the CORC or the HILU commands it is necessary to change the USE command because both procedures use the error term associated with the previous time period. Thus if the USE command is not changed the SORITEC package will attempt to reference an observation before the first one in the data. The commands to activate CORC and HILU are shown below.

```

* * * * *
*
*USE 2 21
*ON PLOT STATS
*CORC Y1 X1 X2 X3
*
* * * * *

```

The Hildreth-Lu technique is activated by the HILU command. The structure of the HILU command follows:

```

* * * * *
*
*HILU (xMIN xMAX xSTEP) Y1 X1 X2 X3
*
* * * * *

```

where

```

0      xMIN - lower limit of x;
0      xMAX - upper limit of x;
0      xSTEP - amount by which x is to increase in order to find
              the best value of x.

```

The example which follows shows how the HILU command is used if the DW statistic reveals that there exists positive serial correlation for an ordinary least squares regression, and the value of x lies in the range $0 < x < 1$.

```

* * * * *
*
*USE 2 21
*HILU (0.0 1.0 0.25) Y1 X1 X2
*
* * * * *

```

where xSTEP = 0.25.

Note the change of the USE commands in the examples above because of the lagged residual in the equation for e_t .

2.5.4 Non-Linear Least Squares (NLLS)

The NLLS procedure uses an iterative process to estimate the unknown parameters of the specified equation. Therefore it is necessary both to state the form of the equation (for example

$C = a_1 + a_2 Y + a_3 Y^2$), (6) and first guesses at the values of the parameters (for example the initial guesses may be

$a_1=1$, $a_2=1$ and $a_3=1$). The regression command sets the iterative procedure in motion.

```
*****
*
*                               Example
*
*EQUATION NO1 C=A1+A2*Y+A3*(Y**2)
*PARAMETER A1 1 A2 1 A3 1
*REGRESS NO1
*
*****
```

2.5.5 More Advanced SORITEC Options

Several advanced SORITEC options are available and they are listed in the following sections. More detailed information can be obtained in the SORITEC Operating Manual.

2.5.5.1 Single Equations

0	SHILLER	distributed lag estimation
0	ALMON	distributed lag estimation
0	MIXED	mixed estimation
0	RLS	restricted least squares
0	RIDGE	ridge regression
0	PRIN	principal components analysis

2.5.5.2 Simultaneous Equations

0	EXOGENOUS	declare exogenous variables
0	TWOSTAGE	two-stage least squares

(6) In the example, drawn from Pindyck and Rubinfeld pp 232-234, convergence occurs quickly and the estimated non-linear equation is as follows: $C = -10.3507 + 1.2409Y^{.7577}$, with $r^2 = .9994$.

2.6 Economic and Mathematical Operations

Economic

0	ACTFIT	compares actual and predicted time series
0	ADJUST	seasonally adjusts a time series
0	CAPACITY	calculates economic capacity
0	CAPITAL	calculates capital stock
0	INDEX	computes price indices
0	INTER	performs peak-to-peak interpolation
0	NORMAL	normalises a time series
0	CONVERT	converts periodicity

Mathematical

0	ATAN2	calculates arctangent on ratio of two variables
0	FUZZ	eliminates rounding error
0	MAX	estimates maximum function
0	MIN	estimates minimum function
0	MOD	performs modular divide
0	RANDOM	generates random numbers
0	RANGE	calculates range of the variable
0	RECODE	recodes a variable
0	WTDAVG	estimates weighted average
0	WTDSUM	calculates weighted sum

2.7 Printing a Hard Copy

Using SORITEC through a terminal interactively does not give the user any printout of the work done. A hard copy can be obtained. This procedure has the disadvantage of losing the benefit of interactive processing. Thus mistakes made are not discovered until the printout is obtained. For this reason any work done using the method outlined below should be kept to a few commands. Two extra statements are needed to generate a printout of work performed.

```
* * * * *
*
*           Hardcopy Sequence
*
*      CTRL E
*USERID/X
*@BREAK, F           First Additional Statement*
*@NATAL*PACKAGE.SORITEC
*USE 1 21
*etc
*QUIT
*@BREAK P, S05PR2   Second Additionl Statement*
*@FIN
*
* * * * *
```

The additional statements are @BREAK, F and @BREAK P, S05PR2.

2.8 Ending a Session with SORITEC

To end SORITEC one merely types QUIT. All items in the workspace are lost. At this point the user must delete all data base files. To exit from the terminal the command @FIN is used.

```
*****  
*  
*                               Sequence                               *  
*  
*QUIT                            *  
*@DELETE file name              *  
*@FIN                            *  
*  
*****
```

The number of @DELETE commands depends on the number of files created by the user. Refer to Section 3.3.

2.9 Additional Features

2.9.1 To Change an Observation in an Element

This is best explained by an example. Suppose we wish to change observation 10 in the variable INCOME.

```
*****  
*  
*                               Example                               *  
*  
*USE 10 10                       *  
*REVISE INCOME=32.9              *  
*USE 1 21                         *  
*  
*****
```

Here the value of 32.9 is substituted for the existing value in observation 10 of variable INCOME. Before proceeding with further data manipulation the USE command must again be specified (for example USE 1 21).

2.9.2 A Routine that allows for more than 100 Observations

Assume that element PRICE has 72 observations and element PRICE2 has 70 observations. It is possible to combine both of these into one element, which for convenience is called PRICE.

```
*****  
*  
*                               Routine                               *  
*  
*USE 73 142                       *  
*ON REVISE                          *  
*PRICE=PRICE2(-72)                  *  
*USE 1 142                           *  
*REPLACE PRICE                       *  
*  
*****
```

In this routine the element PRICE2 is added behind PRICE, and this is achieved by lagging PRICE2 by 72 observations and writing these into the element PRICE.

3 GAINING ENTRY TO THE DATA BASE

3.1 Introduction

The data base is made up of 21 files, each of which contains a number of elements. Each element holds time series data for a particular variable. For example, some of the elements on the file INDEXES are: CONPALL, CONFOOD and PRODPOT. The elements contain respectively for the period 1960 to 1980 the Consumer Price Index - All Goods; the Consumer Price Index - Food; and the Production Price Index.

3.2 Accessing a Single File

Files are accessed by signing on at the terminal and creating a permanent Sperry file. The data base file must be copied to this permanent file. For ease of use give the Sperry permanent file the same name as that of the file in the database. For instance if the file NATACC (ie the file containing National Accounting data) is required one would issue the following commands :

```
* * * * *
*
*   CTRL E
*USERID/X
*@ASG, UP NATACC.
*@COPY ECON-DSIMSON*NATACC.,NATACC.
*@NATAL*PACKAGE.SORITEC
*
* * * * *
```

After accessing NATACC the Soritec package is accessed in the usual manner.

After accessing the file NATACC (which contains National Accounting data), we can now use its elements. Say we wish to use certain elements of this file, possibly NIFICURP (Net National Income at Factor Incomes), and WAGECURP (Employee Remuneration), to estimate a new variable called WSHARE. The elements are accessed by gaining entry to the data base, and SORITEC, as was done in the preceding example, and then executing the following commands.

```
* * * * *
*
*@NATAL*PACKAGE.SORITEC
*USE 1 21
*ACCESS NATACC
*WSHARE=WAGECURP/NIFICURP
*PRINT WAGECURP NIFICURP WSHARE
*QUIT
*@DELETE NATACC.
*FIN
*
* * * * *
```

Note: The Sperry file NATACC, and any other Sperry files which have been created, must be deleted before ending the run at the terminal.

The command, as shown above, is:

```
O @DELETE file name
```

After a file has been accessed the CONTENTS command will list the elements in that file. The command CONTENTS must be executed after the file has been accessed.

A complete listing of file names, and their elements are given in Section 4.

3.3 Accessing Elements from Many Files

Often you may need to draw elements from several different files. The routine for accessing more than one file is a development of Section 3.2. The routine requires that the @ASG and @COPY be repeated for the files needed.

```
*****
*
* CTRL E
*
*USERID/X
*@ASG, UP File1.
*@ASG, UP File2.
*@ASG, UP File3.
*@COPY ECON-DSIMSON*File1., File1.
*@COPY ECON-DSIMSON*File2., File2.
*@COPY ECON-DSIMSON*File3., File3.
*@NATAL*PACKAGE.SORITEC
*Access File1
*CONTENTS
*COPY Element1 Element2
*RETURN File1
*ACCESS File2
*COPY Element1 Element2
*RETURN File2 etc.
*****
```

The COPY command is used to copy the element required from the respective file into the workspace. The file must be returned before the element of another file can be accessed.

3.4 Ending a Run with the Data Base

At the end of the SORITEC run all files under @ASG must be deleted.

```

*****
*
*                               Example
*
*QUIT
*@DELETE File1.
*@DELETE File2.
*@DELETE File3.
*@FIN
*
*****

```

3.5 Example - Estimating an Investment Function for the South African Economy

If you were attempting to fit an investment function of the form

$$I_t = a_1 + a_2(Y_t - Y_{t-1}) + a_3(B_t - B_{t-1}) + a_4(1 - i_{t-1}) + a_5((S_t - S_{t-1})/P) + a_6(K_t - K_{t-1})$$

where

- I_t = Gross Capital Formation
- Y_t = GDP
- B_t = Long Term Capital Inflows
- i_t = Prime Overdraft Rate
- S_t = Share Price Index (Industrial & Commercial)
- P = Production Price Index
- K_t = Capital Stock.

The data base files needed are:

- File NATACC - National Accounts;
Elements
- GDPFICTP - Gross Domestic Product,
Factor Incomes;
- CAPTOT - Total Fixed Capital Stock;
- GDC - Gross Domestic Capital Formation.
- File INTTRADE - Foreign Trade;
Element
- BPLTCAPT - Long Term Capital Movements.
- File MONEYS - Monetary Data;
Elements
- PRIMINT - Prime Overdraft Rate;
- SHARE - Industrial and Commercial Price Index.

File INDEXES - Indexes;
Element
PRODPTOT - Production Price Index

The variables to be created are:

DELY = Change in Y_t ;
DELCI = Change in B_t ;
DELI = Change in i_t ;
RDELS = Real Change in S_t ;
NDELI = Change in K_t .

The following commands, incorporating the above names, will provide an estimate of the equation I_t .

```
*****  
*  
*      CTRL E  
*USERID/X  
*@ASG, UP NATACC.  
*@ASG, UP INTTRADE.  
*@ASG, UP MONEYS.  
*@ASG, UP INDEXES.  
*@COPY ECON-DSIMSON*NATACC., NATACC.  
*@COPY ECON-DSIMSON*INTTRADE., NATACC.  
*@COPY ECON-DSIMSON*MONEYS., MONEYS.  
*@COPY ECON-DSIMSON*INDEXES., INDEXES.  
*@NATAL*PACKAGE.SORITEC  
*ACCESS NATACC  
*COPY GDPFICTP CAPTOT GDC  
*RETURN NATACC  
*ACCESS INTTRADE  
*COPY BPLTCAPT  
*  
*****
```

cont. p22.

```

*****
*
*RETURN INTTRADE
*ACCESS MONEYS
*COPY PRIMINT SHARE
*RETURN MONEYS
*ACCESS INDEXES
*COPY PRODPTOT
*RETURN INDEXES
*USE 2 21
*DELY=GDPFICTP-GDPFICTP(-1)
*DELICI=BPLTCAPT-BPLTCAPT(-1)
*DELI=PRIMINT-PRIMINT(-1)
*RDELS=(SHARE-SHARE(-1))/PRODPTOT
*NDELI=CAPTOT-CAPTOT(-1)
*REGRESS GDC DELY DELICI DELI RDELS NDELI
*QUIT
*@DELETE NATACC.
*@DELETE INTTRADE.
*@DELETE MONEYS.
*@DELETE INDEXES.
*FIN
*
*****

```

The results would appear on the terminal screen as follows

```

EQUATION 1
DEPENDENT VARIABLE IS GDC
THE CURRENTLY ACTIVE OBSERVATION SET IS
( 2- 21)
ORDINARY LEAST SQUARES

```

RIGHT-HAND VARIABLE	ESTIMATED COEFFICIENT	STANDARD ERROR	T-STATISTIC
CONST	-647.317	1019.97	-.634643
DELY	1.08514	.121978	8.89614
DELICI	-1.35051	.734954	-1.83754
DELI	194.340	379.444	.512171
RDELS	-471.451	976.776	-.487149
RDELI	1.09106	.393516	2.77260

R-SQUARED = .945384

which shows that the equation appears to give a satisfactory linear fit to the data and the important determinants of capital formation being the change in income and the fixed capital stock.

4 DIRECTORY OF FILES AND ELEMENTS

4.1 Introduction

In Chapter 3 the composition of the data base was described, and it was shown to be comprised of a number of files, each of which embodied several elements. Each element contained time-series data for a particular variable.

Use of the base involves accessing the file (or files) which are required, and then the user can draw on their elements. Section 4.2 lists the names which have been given to the files, and states the type of data which they contain, while Section 4.3 gives a listing of the elements of each file. The sources of the data in the elements are given at the end of each list of elements. In Section 4.4 a flow chart is provided to illustrate the process of accessing files and elements.

4.2 File Names

File Name	Type of Data	Page Number
Macroeconomic		
NATACC	National Accounts	25
MONEYS	Money Supply and Interest Rates	33
INDEXES	Price Indexes	34
Labour		
LABOUR	Employment and Wage	39
Population		
DEMOG	Demographic	48
Social Statistics		
HEALTH	Health	53
EDUCTN	Education	55
SOCSC	Social Security	56
Economic Sector		
MANUF	Manufacturing	59
CONST	Construction	61
TRANSPT	Transport	63
AGRIC	Agriculture	64
GOVT	Government Accounts	65
ELECTRIC	Electricity Supply	67

International Economics		
INTTRADE	Balance of Payments and Exchange Rates	68
Foreign Assets and Liabilities		
FORTOTI	Total Foreign Investment in South Africa	76
FORDI	Direct Foreign Investment in South Africa	88
FORNDI	Indirect Foreign Investment in South Africa	99
FORTASS	Total South African Investment Abroad	110
FORDASS	Direct South African Investment Abroad	110
FORIASS	Indirect South African Investment Abroad	110

Note: The column headed 'page number' provides the reference to the element listing of the file in Section 4.3 below.

4.3 Element Names

In the listings which follow the element names are given in the first column, and the description of their contents follows in the second column.

NAME OF FILE : NATACC (IN RAND MILLIONS)

GDE	GROSS DOMESTIC EXPENDITURE
GDC	GROSS DOMESTIC CAPITAL FORMATION
GDCGVT	GROSS DOMESTIC CAPITAL FORMATION : CENTRAL GOVERNMENT
GDCGVTE	GROSS DOMESTIC CAPITAL FORMATION : GOVERNMENT ENTERPRISES
GDCSATS	GROSS DOMESTIC CAPITAL FORMATION : SOUTH AFRICAN RAILWAYS AND HARBOURS
GDCPC	GROSS DOMESTIC CAPITAL FORMATION : PUBLIC CORPORATIONS
GDCPVTE	GROSS DOMESTIC CAPITAL FORMATION : PRIVATE ENTERPRISES
GDCTOT	GROSS DOMESTIC CAPITAL FORMATION : TOTAL
PVTCEXP	PRIVATE CONSUMPTION EXPENDITURE
GVTTAX	DIRECT TAXES AND CURRENT TRANSFERS TO GENERAL GOVERNMENT
WLDTFS	TRANSFERS TO THE REST OF THE WORLD FROM CURRENT ACCOUNT
PSNLSAV	PERSONAL SAVINGS
EMPREM	REMUNERATION OF EMPLOYEES

NAME OF FILE : NATACC (IN RAND MILLIONS)

PROPINC	INCOME FROM PROPERTY BY HOUSEHOLDS
GVTRSF	CURRENT TRANSFERS RECEIVED FROM GENERAL GOVERNMENT
WLDTRSF	TRANSFERS FROM THE REST OF THE WORLD TO CURRENT ACCOUNT
CONEXP	GENERAL GOVERNMENT, CURRENT ACCOUNT CONSUMPTION EXPENDITURE
SUBS	GENERAL GOVERNMENT, CURRENT ACCOUNT SUBSIDIES
HSETRSF	GENERAL GOVERNMENT, CURRENT ACCOUNT CURRENT TRANSFERS TO HOUSEHOLDS
WLDTRAS	GENERAL GOVERNMENT, CURRENT ACCOUNT TRANSFERS TO THE REST OF THE WORLD
GVTCURAC	GENERAL GOVERNMENT SURPLUS ON CURRENT ACCOUNT
PVTEXPFO	PRIVATE CONSUMPTION EXPENDITURE ON FOOD (AT CURRENT PRICES)
PVTEXPCF	PRIVATE CONSUMPTION EXPENDITURE ON CLOTHING AND FOOTWEAR (AT CURRENT PRICES)
PVTEXPRF	PRIVATE CONSUMPTION EXPENDITURE ON RENT, FUEL AND POWER (AT CURRENT PRICES)
PVTEXPFH	PRIVATE CONSUMPTION EXPENDITURE ON FURNITURE AND HOUSEHOLD EQUIPMENT (AT CURRENT PRICES)
PVTEXPTC	PRIVATE CONSUMPTION EXPENDITURE ON TRANSPORT AND COMMUNICATION (AT CURRENT PRICES)

NAME OF FILE : NATACC (IN RAND MILLIONS)

GDFC	GROSS DOMESTIC FIXED CAPITAL FORMATION
GDCBC	GROSS DOMESTIC CAPITAL FORMATION : BUILDINGS AND CONSTRUCTION
GDCPA	GROSS DOMESTIC CAPITAL FORMATION : PUBLIC AUTHORITIES
GDCPC	GROSS DOMESTIC CAPITAL FORMATION : PUBLIC CORPORATIONS
GDCPE	GROSS DOMESTIC CAPITAL FORMATION : PRIVATE ENTERPRISES
GDCT	GROSS DOMESTIC CAPITAL FORMATION : TOTAL
PDPA	PROVISION FOR DEPRECIATION ON CAPITAL :PUBLIC AUTHORITIES
PDPC	PROVISION FOR DEPRECIATION ON CAPITAL :PUBLIC CORPORATIONS
PDPE	PROVISION FOR DEPRECIATION ON CAPITAL :PRIVATE ENTERPRISES
PDPT	PROVISION FOR DEPRECIATION ON CAPITAL :TOTAL
NDCPA	NET DOMESTIC CAPITAL FORMATION : PUBLIC AUTHORITIES
NDCPC	NET DOMESTIC CAPITAL FORMATION : PUBLIC CORPORATIONS
NDCPE	NET DOMESTIC CAPITAL FORMATION : PRIVATE ENTERPRISES

NAME OF FILE : NATACC (IN RAND MILLIONS)

NDCT	NET DOMESTIC CAPITAL FORMATION : TOTAL
GDFCAFF	GROSS DOMESTIC FIXED CAPITAL FORMATION : AGRICULTURE , FORESTRY AND FISHING
GDFCM	GROSS DOMESTIC FIXED CAPITAL FORMATION : MINING AND QUARRYING
GDFCMAN	GROSS DOMESTIC FIXED CAPITAL FORMATION : MANUFACTURING
GDFCC	GROSS DOMESTIC FIXED CAPITAL FORMATION : CONSTRUCTION
PPSM	MANUFACTURING PROFIT AS A PERCENTAGE OF MEAN SHAREHOLDERS FUNDS
PPSC	COMMERCE PROFIT AS A PERCENTAGE OF MEAN SHAREHOLDERS FUNDS
PDIVM	MANUFACTURING DIVIDEND RATE
PDIVC	COMMERCE DIVIDEND RATE
ITPM	MANUFACTURING INDEXES OF TOTAL PROFIT
ITPC	COMMERCE INDEXES OF TOTAL PROFIT
ITAXM	MANUFACTURING INDEXES OF TAXATION
ITAXC	COMMERCE INDEXES OF TAXATION

NAME OF FILE : NATACC (IN RAND MILLIONS)

IDIVM	MANUFACTURING INDEXES OF DIVIDENDS
IDIVC	COMMERCE INDEXES OF DIVIDENDS
ISAVM	MANUFACTURING INDEXES OF SAVINGS
ISAVC	COMMERCE INDEXES OF SAVINGS
PATAXPM	MANUFACTURING TAXATION AS A PERCENTAGE OF PROFIT APPROPRIATION
PATAXPC	COMMERCE TAXATION AS A PERCENTAGE OF PROFIT APPROPRIATION
PADIVPM	MANUFACTURING DIVIDENDS AS A PERCENTAGE OF PROFIT APPROPRIATION
PADIVPC	COMMERCE DIVIDENDS AS A PERCENTAGE OF PROFIT APPROPRIATION
PASAVPM	MANUFACTURING SAVINGS AS A PERCENTAGE OF PROFIT APPROPRIATION
PASAVPC	COMMERCE SAVINGS AS A PERCENTAGE OF PROFIT APPROPRIATION
GDPFI75P	REAL GROSS DOMESTIC PRODUCT AT FACTOR INCOMES
GDPPC75P	REAL GROSS DOMESTIC PRODUCT AT FACTOR INCOMES PER CAPITA
WAGECURP	GROSS DOMESTIC PRODUCT AT FACTOR INCOMES :REMUNERATION OF EMPLOYEES

NAME OF FILE : NATACC (IN RAND MILLIONS)

SURPCURP	GROSS DOMESTIC PRODUCT AT FACTOR INCOMES :GROSS OPERATING SURPLUS
NIFICURP	NET NATIONAL INCOME AT FACTOR INCOMES
GDPFICTP	GROSS DOMESTIC PRODUCT AT FACTOR INCOMES AT CURRENT PRICES
AGRICCTP	GROSS DOMESTIC PRODUCT AT FACTOR INCOMES :AGRICULTURE AND FORESTRY
MINECTP	GROSS DOMESTIC PRODUCT AT FACTOR INCOMES :MINING AND QUARRYING
MANCTP	GROSS DOMESTIC PRODUCT AT FACTOR INCOMES :MANUFACTURING
ELECCTP	GROSS DOMESTIC PRODUCT AT FACTOR INCOMES :ELECTRICITY
CONSTCTP	GROSS DOMESTIC PRODUCT AT FACTOR INCOMES :CONSTRUCTION
COMMCTP	GROSS DOMESTIC PRODUCT AT FACTOR INCOMES :COMMERCE
TPTCTP	GROSS DOMESTIC PRODUCT AT FACTOR INCOMES :TRANSPORT
FINCTP	GROSS DOMESTIC PRODUCT AT FACTOR INCOMES :FINANCE
SOCSCCTP	GROSS DOMESTIC PRODUCT AT FACTOR INCOMES :SOCIAL SERVICES
IMPFICTP	GROSS DOMESTIC PRODUCT AT FACTOR INCOMES :LESS IMPUTED FINANCIAL SERVICES

NAME OF FILE : NATACC (IN RAND MILLIONS)

ENTCTP	GROSS DOMESTIC PRODUCT AT FACTOR INCOMES :TOTAL ENTERPRISES
GOVCTP	GROSS DOMESTIC PRODUCT AT FACTOR INCOMES :GENERAL GOVERNMENT
OTHERCTP	GROSS DOMESTIC PRODUCT AT FACTOR INCOMES :OTHER
CAPAG	FIXED CAPITAL STOCK AGRICULTURE, FORESTRY AND FISHING
CAPMIN	FIXED CAPITAL STOCK MINING AND QUARRYING
CAPMAN	FIXED CAPITAL STOCK MANUFACTURING
CAPECE	FIXED CAPITAL STOCK ELECTRICITY, GAS AND WATER
CAPCON	FIXED CAPITAL STOCK CONSTRUCTION (CONTRACTORS)
CAPWRT	FIXED CAPITAL STOCK WHOLESALE AND RETAIL TRADE, CATERING AND ACCOMMODATION
CAPTDA	FIXED CAPITAL STOCK TRANSPORT STORAGE AND COMMUNICATION
CAPFIR	FIXED CAPITAL STOCK FINANCE, INSURANCE AND REAL ESTATE (INCL. TFR. COSTS)
CAPCSP	FIXED CAPITAL STOCK COMMUNITY, SOCIAL AND PERSONAL SERVICES
CAPTOT	FIXED CAPITAL STOCK TOTAL

NAME OF FILE : NATACC (IN RAND MILLIONS)

PACAP PUBLIC AUTHORITIES FIXED CAPITAL
STOCK

PCCAP PUBLIC CORPORATIONS FIXED CAPITAL
STOCK

PBCAP PRIVATE BUSINESS ENTERPRISES FIXED
CAPITAL STOCK

NOTE: PACAP+PCCAP+PBCAP DOES NOT
EXACTLY EQUAL CAPTOT DUE TO THE USE OF DIFFERENT
INFLATORS.

Sources

South African Statistics 1966, pp W5, W6, W7, W8, W13, W15.

South African Statistics 1972, pp V5, V6.

South African Statistics 1974, pp 21.16, 21.17, 21.18, 21.20, 21.21,
21.22.

South African Statistics 1976, p 21.16.

South African Reserve Bank Bulletin, Supplement, September 1978,
pp 41, 42.

South African Reserve Bank Bulletin, Supplement, March 1983,
pp 15 - 98.

NAME OF FILE : MCNEYS

NMONEY	SHORT-TERM DEPOSITS (EXCL. DEMAND DEPOSITS) AND MEDIUM TERM DEPOSITS OF THE BANKING SECTOR
DPOSITS	DEMAND DEPOSITS WITH THE BANKING SECTOR EXCLUDING FOREIGN AND GOVERNMENT DEPOSITS
NOTECOIN	NOTES AND COINS IN CIRCULATION OUTSIDE THE BANKING SECTOR
SHARE	INDEX OF INDUSTRIAL AND COMMERCIAL SHARE PRICES
PRIMINT	PRIME OVERDRAFT RATE OF THE MAJOR COMMERCIAL BANKS
LTINTR	YIELD IN THE SECONDARY MARKET OF LONG TERM GOVERNMENT STOCK

Sources

International Financial Statistics Year Book, 1984, pp528 - 529.
Selected South African Reserve Bank Quarterly Bulletins, June 1964 - December 1981.

NAME OF FILE : INDEXES

PRODPTOT	PRODUCTION PRICE INDEX :TOTAL
PRODPSA	PRODUCTION PRICE INDEX :SOUTH AFRICAN GOODS
PRODPIMP	PRODUCTION PRICE INDEX :IMPORTED GOODS
CONPALL	CONSUMER PRICE INDEX :ALL GOODS
CONFOOD	CONSUMER PRICE INDEX :FOOD
RETPBD	RETAIL PRICE :BREAD
RETPBF	RETAIL PRICE :BEEF
RETPMT	RETAIL PRICE :MUTTON
RETPMK	RETAIL PRICE :MILK
RETPBU	RETAIL PRICE :BUTTER
RETPEG	RETAIL PRICE :EGGS
RETPPO	RETAIL PRICE :POTATOES
RETPSU	RETAIL PRICE :SUGAR

NAME OF FILE : INDEXES

FPIT	FARMING PRICE INDEX :TOTAL
FPIHPT	FARMING PRICE INDEX :HORTICULTURAL PRODUCTS :TOTAL
FPIHPV	FARMING PRICE INDEX :HORTICULTURAL PRODUCTS :VITICULTURE
FPIHPVE	FARMING PRICE INDEX :HORTICULTURAL PRODUCTS :VEGETABLES
FPIHPF	FARMING PRICE INDEX :HORTICULTURAL PRODUCTS :FRUIT
FPICT	FARMING PRICE INDEX :CROPS :TOTAL
FPICS	FARMING PRICE INDEX :CROPS :SUMMER
FPICW	FARMING PRICE INDEX :CROPS :WINTER
FPICSC	FARMING PRICE INDEX :CROPS :SUGAR CANE
FPICO	FARMING PRICE INDEX :CROPS :OTHER
FPILT	FARMING PRICE INDEX :LIVESTOCK : TOTAL
FPILPP	FARMING PRICE INDEX :LIVESTOCK : PASTORAL PRODUCTS
FPILD	FARMING PRICE INDEX :LIVESTOCK : DAIRY PRODUCTS

NAME OF FILE : INDEXES

IOASA	INDUSTRIAL OUTPUT :ALL GROUPS : SOUTH AFRICAN GOODS
IOAT	INDUSTRIAL OUTPUT :ALL GROUPS : TOTAL FOR ALL GOODS
IOAGF	INDUSTRIAL OUTPUT :AGRICULTURE : FOOD
IOAGO	INDUSTRIAL OUTPUT : AGRICULTURE : OTHER
IOAGT	INDUSTRIAL OUTPUT :AGRICULTURE : TOTAL
IOF	INDUSTRIAL OUTPUT :FORESTRY
IOMT	INDUSTRIAL OUTPUT :MINING : TOTAL
IOMANT	INDUSTRIAL OUTPUT :MANUFACTURING : TOTAL
PPIASA	PRODUCTION PRICE INDEX :ALL GROUPS : SOUTH AFRICAN GOODS
PPIAT	PRODUCTION PRICE INDEX :ALL GROUPS : TOTAL
PPIAGF	PRODUCTION PRICE INDEX :AGRICULTURE :FOOD
PPIAGO	PRODUCTION PRICE INDEX :AGRICULTURE : OTHER
PPIAT	PRODUCTION PRICE INDEX :AGRICULTURE : TOTAL

NAME OF FILE : INDEXES

FPILSS	FARMING PRICE INDEX :LIVESTOCK : SLAUGHTER STOCK
FPILP	FARMING PRICE INDEX :LIVESTOCK : POULTRY
FRIT	FARMING REQUISITES INDEX :TOTAL
FRISTR	FARMING REQUISITES INDEX : SHORT-TERM REQUISITES
FRIMT	FARMING REQUISITES INDEX :MACHINERY, TOOLS AND IMPLEMENTS
FRIF	FARMING REQUISITES INDEX : FERTILIZER
FRIFU	FARMING REQUISITES INDEX :FUEL
FRIFE	FARMING REQUISITES INDEX :FEEDS
FRIP	FARMING REQUISITES INDEX :PACKING MATERIALS
FRIS	FARMING REQUISITES INDEX :SPRAYS AND DIPS
FRITA	FARMING REQUISITES INDEX :TRACTORS
FRIM	FARMING REQUISITES INDEX :MOTOR LORRIES
FRIPU	FARMING REQUISITES INDEX :PUMPING EQUIPMENT

NAME OF FILE : INDEXES

PPIF PRODUCTION PRICE INDEX :FORESTRY

Sources

South African Statistics 1976, p 8.15.

South African Statistics 1982, pp 8.4, 8.5,
8.6, 8.15, 8.19.

NAME OF FILE : (A30UR

MINETOTN TOTAL NUMBER OF EMPLOYEES IN MINING

MINEWHTN NUMBER OF WHITES EMPLOYED IN MINING

MINECOLN NUMBER OF COLOUREDS EMPLOYED IN
MINING

MINEASNN NUMBER OF ASIANS EMPLOYED IN
MINING

MINEBLKN NUMBER OF AFRICANS EMPLOYED IN
MINING

MINETOTS TOTAL SALARY EARNED IN MINING

MINEWHTS SALARY EARNED IN MINING :WHITE

MINECOLS SALARY EARNED IN MINING :COLOURED

MINEASNS SALARY EARNED IN MINING :ASIAN

MINEBLKS SALARY EARNED IN MINING :AFRICAN

MANTOTN TOTAL NUMBER EMPLOYED IN
MANUFACTURING

MANWHTN NUMBER OF WHITES EMPLOYED IN
MANUFACTURING

MANCOLN NUMBER OF COLOUREDS EMPLOYED IN
MANUFACTURING

NAME OF FILE : LABOUR

MANASN	NUMBER OF ASIANS EMPLOYED IN MANUFACTURING
MANBLKN	NUMBER OF AFRICANS EMPLOYED IN MANUFACTURING
MANTOTS	TOTAL SALARY EARNED IN MANUFACTURING
MANWHTS	SALARY EARNED BY WHITES IN MANUFACTURING
MANCOLS	SALARY EARNED BY COLOUREDS IN MANUFACTURING
MANASNS	SALARY EARNED BY ASIANS IN MANUFACTURING
MANBLKS	SALARY EARNED BY AFRICANS IN MANUFACTURING
CONTOTN	TOTAL NUMBER OF PEOPLE EMPLOYED IN CONSTRUCTION
CONWHTN	NUMBER OF WHITES EMPLOYED IN CONSTRUCTION
CONCOLN	NUMBER OF COLOUREDS EMPLOYED IN CONSTRUCTION
CONASN	NUMBER OF ASIANS EMPLOYED IN CONSTRUCTION
CONBLKN	NUMBER OF AFRICANS EMPLOYED IN CONSTRUCTION
CONTOTS	TOTAL SALARY EARNED IN CONSTRUCTION

NAME OF FILE : LABOUR

CONWHTS	SALARY EARNED BY WHITES IN CONSTRUCTION
CONCOLS	SALARY EARNED BY COLOURED IN CONSTRUCTION
CONASNS	SALARY EARNED BY ASIANS IN CONSTRUCTION
CONBLKS	SALARY EARNED BY AFRICANS IN CONSTRUCTION
INDNPT	TOTAL NUMBER OF PEOPLE INVOLVED IN INDUSTRIAL DISPUTES
INDNPW	NUMBER OF WHITES INVOLVED IN INDUSTRIAL DISPUTES
INDNPNW	NUMBER OF NON-WHITES INVOLVED IN INDUSTRIAL DISPUTES
NDLW	NUMBER OF DAYS LOST BY WHITE WORKERS THROUGH INDUSTRIAL DISPUTES
NDLNW	NUMBER OF DAYS LOST BY NON-WHITE WORKERS THROUGH INDUSTRIAL DISPUTES
NDLT	TOTAL NUMBER OF DAYS LOST THROUGH INDUSTRIAL DISPUTES
NDLNIW	NUMBER OF DAYS LOST BY WHITE WORKERS NOT INVOLVED IN INDUSTRIAL DISPUTES
NDLNINW	NUMBER OF DAYS LOST BY NON-WHITE WORKERS NOT INVOLVED IN INDUSTRIAL DISPUTES
NDLNIT	TOTAL NUMBER OF DAYS LOST BY WORKERS NOT INVOLVED IN INDUSTRIAL DISPUTES

NAME OF FILE : LABOUR

MHWT	TOTAL NUMBER OF HOURS WORKED IN MANUFACTURING
MHWW	HOURS WORKED BY WHITES IN MANUFACTURING
MHWC	HOURS WORKED BY COLOURED IN MANUFACTURING
MHWA	HOURS WORKED BY ASIANS IN MANUFACTURING
MHWB	HOURS WORKED BY AFRICANS IN MANUFACTURING
MOTWT	TOTAL OVERTIME WORKED IN MANUFACTURING
MOTWW	OVERTIME WORKED BY WHITES IN MANUFACTURING
MOTWC	OVERTIME WORKED BY COLOURED IN MANUFACTURING
MOTWA	OVERTIME WORKED BY ASIANS IN MANUFACTURING
MOTWB	OVERTIME WORKED BY AFRICANS IN MANUFACTURING
MOTPWH	OVERTIME AS A PERCENTAGE OF ORDINARY HOURS IN MANUFACTURING
CHWT	TOTAL HOURS WORKED IN CONSTRUCTION
CHWW	HOURS WORKED BY WHITES IN CONSTRUCTION

NAME OF FILE : LABOUR

CHWC	HOURS WORKED BY COLOUREDS IN CONSTRUCTION
CHWA	HOURS WORKED BY ASIANS IN CONSTRUCTION
CHWB	HOURS WORKED BY AFRICANS IN CONSTRUCTION
COTWT	TOTAL OVERTIME WORKED IN CONSTRUCTION
COTWW	OVERTIME WORKED BY WHITES IN CONSTRUCTION
COTWC	OVERTIME WORKED BY COLOUREDS IN CONSTRUCTION
COTWA	OVERTIME WORKED BY ASIANS IN CONSTRUCTION
COTWB	OVERTIME WORKED BY AFRICANS IN CONSTRUCTION
COTPWH	OVERTIME AS A PERCENTAGE OF ORDINARY HOURS IN CONSTRUCTION
CGOVTOTN	CENTRAL GOVERNMENT TOTAL EMPLOYMENT
CGOVWN	CENTRAL GOVERNMENT WHITE EMPLOYMENT
CGOVCN	CENTRAL GOVERNMENT COLOURED EMPLOYMENT

NAME OF FILE : LABOUR

CGOVASN	CENTRAL GOVERNMENT ASIAN EMPLOYMENT	0W80
CGOVBN	CENTRAL GOVERNMENT BLACK EMPLOYMENT	AW80
PGOVTOTM	PROVINCIAL TOTAL EMPLOYMENT	0W80
PGOVWN	PROVINCIAL WHITE EMPLOYMENT	0W80
PGOVCN	PROVINCIAL COLOURED EMPLOYMENT	0W80
PGOVASN	PROVINCIAL ASIAN EMPLOYMENT	0W80
PGOVBN	PROVINCIAL AFRICAN EMPLOYMENT	0W80
LGOVTOTN	LOCAL AUTHORITIES TOTAL EMPLOYMENT	0W80
LGOVWN	LOCAL AUTHORITIES WHITE EMPLOYMENT	0W80
LGOVCN	LOCAL AUTHORITIES COLOURED EMPLOYMENT	0W80
LGOVASN	LOCAL AUTHORITIES ASIAN EMPLOYMENT	0W80
LGOVBN	LOCAL AUTHORITIES AFRICAN EMPLOYMENT	0W80
UNIVTOTN	UNIVERSITIES TOTAL EMPLOYMENT	0W80

NAME OF FILE : LABOUR

UNIVWW	UNIVERSITIES WHITE EMPLOYMENT
UNIVCN	UNIVERSITIES COLOURED EMPLOYMENT
UNIVASN	UNIVERSITIES ASIAN EMPLOYMENT
UNIVBN	UNIVERSITIES AFRICAN EMPLOYMENT
NGOVTOTN	NATIONAL STATES TOTAL EMPLOYMENT
CGOVTOTW	CENTRAL GOVERNMENT TOTAL SALARIES AND WAGES
CGOVWW	CENTRAL GOVERNMENT WHITE SALARIES AND WAGES
CGOVCW	CENTRAL GOVERNMENT COLOURED SALARIES AND WAGES
CGOVASW	CENTRAL GOVERNMENT ASIAN SALARIES AND WAGES
CGOVBW	CENTRAL GOVERNMENT AFRICAN SALARIES AND WAGES
PGOVTOTW	PROVINCIAL ADMINISTRATIONS TOTAL SALARIES AND WAGES
PGOVWW	PROVINCIAL ADMINISTRATIONS WHITE SALARIES AND WAGES
PGOVCW	PROVINCIAL ADMINISTRATIONS WHITE SALARIES AND WAGES

NAME OF FILE : LABOUR

PGOVASW	PROVINCIAL ADMINISTRATIONS ASIAN SALARIES AND WAGES
PGOVBW	PROVINCIAL ADMINISTRATIONS AFRICAN SALARIES AND WAGES
LGOVTOTW	LOCAL AUTHORITIES TOTAL SALARIES AND WAGES
LGOVWW	LOCAL AUTHORITIES WHITE SALARIES AND WAGES
LGOVCW	LOCAL AUTHORITIES COLOURED SALARIES AND WAGES
LGOVASW	LOCAL AUTHORITIES ASIAN SALARIES AND WAGES
LGOVBW	LOCAL AUTHORITIES AFRICAN SALARIES AND WAGES
UNIVTOTW	UNIVERSITIES TOTAL WHITE SALARIES AND WAGES
UNIVWW	UNIVERSITIES WHITE SALARIES AND WAGES
UNIVCW	UNIVERSITIES COLOURED SALARIES AND WAGES
UNIVASW	UNIVERSITIES ASIAN SALARIES AND WAGES
UNIVBW	UNIVERSITIES AFRICAN SALARIES AND WAGES
NGOVTOTW	NATIONAL STATES TOTAL SALARIES AND WAGES

Sources

South African Statistics 1974, pp 7.23, 7.33,
7.38, 7.39, 7.43.

South African Statistics 1976, pp 7.18, 7.19.

South African Statistics 1982, pp 7.6, 7.7,
7.20, 7.21, 7.23, 7.26.

NAME OF FILE : DEMOG

TOTPOP	TOTAL POPULATION
TOTM	TOTAL MALE POPULATION
TOTF	TOTAL FEMALE POPULATION
TOTWM	TOTAL WHITE MALE POPULATION
TOTWF	TOTAL WHITE FEMALE POPULATION
TOTCM	TOTAL COLOURED MALE POPULATION
TOTCF	TOTAL COLOURED FEMALE POPULATION
TOTAM	TOTAL ASIAN MALE POPULATION
TOTAF	TOTAL ASIAN FEMALE POPULATION
TOTBM	TOTAL AFRICAN MALE POPULATION
TOTBF	TOTAL AFRICAN FEMALE POPULATION
TOTWB	TOTAL WHITE BIRTHS
TOTWMB	TOTAL WHITE MALE BIRTHS

NAME OF FILE : DEMOG

TOTWFB	TOTAL WHITE FEMALE BIRTHS
TOTWD	TOTAL WHITE DEATHS
TOTWMD	TOTAL WHITE MALE DEATHS
TOTWFD	TOTAL WHITE FEMALE DEATHS
TOTWIND	TOTAL WHITE INFANT DEATHS (NUMBER)
TOTWIRD	TOTAL WHITE INFANT DEATHS (RATE)
TOTWMA	TOTAL WHITE MARRIAGES
TOTWDV	TOTAL WHITE DIVORCES
TOTWCB	TOTAL WHITE CRUDE RATE BIRTHS
TOTWCD	TOTAL WHITE CRUDE RATE DEATHS
TOTWCMA	TOTAL WHITE CRUDE RATE MARRIAGES
TOTWCDV	TOTAL WHITE CRUDE RATE DIVORCES
TOTCB	TOTAL COLOURED BIRTHS

NAME OF FILE : DEMOG

TOTCMB	TOTAL COLOURED MALE BIRTHS
TOTCFB	TOTAL COLOURED FEMALE BIRTHS
TOTCD	TOTAL COLOURED DEATHS
TOTCMD	TOTAL COLOURED MALE DEATHS
TOTCFD	TOTAL COLOURED FEMALE DEATHS
TOTCIND	TOTAL COLOURED INFANT DEATHS (NUMBER)
TOTCIRD	TOTAL COLOURED INFANT DEATHS (RATE)
TOTCMA	TOTAL COLOURED MARRIAGES
TOTCDV	TOTAL COLOURED DIVORCES
TOTCCB	TOTAL COLOURED CRUDE RATE BIRTHS
TOTCCD	TOTAL COLOURED CRUDE RATE DEATHS
TOTCCMA	TOTAL COLOURED CRUDE RATE MARRIAGES
TOTCCDV	TOTAL COLOURED CRUDE RATE DIVORCES

NAME OF FILE : DEMOG

TOTAB	TOTAL ASIAN BIRTHS
TOTAMB	TOTAL ASIAN MALE BIRTHS
TOTAFB	TOTAL ASIAN FEMALE BIRTHS
TOTAD	TOTAL ASIAN DEATHS
TOTAMD	TOTAL ASIAN MALE DEATHS
TOTAFD	TOTAL ASIAN FEMALE DEATHS
TOTAIND	TOTAL ASIAN INFANT DEATHS (NUMBER)
TOTAIRD	TOTAL ASIAN INFANT DEATHS (RATE)
TOTAMA	TOTAL ASIAN MARRIAGES
TOTADV	TOTAL ASIAN DIVORCES
TOTACB	TOTAL ASIAN CRUDE RATE BIRTHS
TOTACD	TOTAL ASIAN CRUDE RATE DEATHS
TOTACMA	TOTAL ASIAN CRUDE RATE MARRIAGES

NAME OF FILE : DEMOG

TOTACDV TOTAL ASIAN CRUDE RATE DIVORCES

Sources

South African Statistics 1976, p 1.6.

South African Statistics 1982, pp 1.4, 3.4, 3.5, 3.6.

NAME OF FILE : HEALTH

MEDP	MEDICAL PRACTITIONERS (INCLUDING SPECIALISTS)
INTMP	INTERNS
SPECMP	SPECIALISTS
DENTMP	DENTISTS (INCLUDING SPECIALISTS)
NURSEMP	NURSES
CHEMP	CHEMISTS
OTHERMP	OTHER SUPPLEMENTARY HEALTH SERVICES
TBW	TUBERCULOSIS :WHITES
TBC	TUBERCULOSIS :COLOUREDS
TBA	TUBERCULOSIS :ASIANS
TBB	TUBERCULOSIS :AFRICANS
TYW	TYPHOID :WHITES
TYC	TYPHOID :COLOUREDS

NAME OF FILE : HEALTH

TYA TYPHOID :ASIANS

TYB TYPHOID :AFRICANS

Source

South African Statistics 1982, pp 4.2, 4.7, 4.8. 4.9.

NAME OF FILE : EDUCTN

SFW NUMBER OF PUPILS FROM CLASS ONE TO
 STANDARD FIVE :WHITE

STW NUMBER OF PUPILS FROM STANDARD FIVE
 TO MATRIC :WHITE

TOTW TOTAL NUMBER OF WHITES AT SCHOOL

CSF NUMBER OF PUPILS FROM CLASS ONE TO
 STANDARD FIVE :COLOURED

CST NUMBER OF PUPILS FROM STANDARD FIVE
 TO MATRIC :COLOURED

TOTC TOTAL NUMBER OF COLOUREDS AT SCHOOL

ASF NUMBER OF PUPILS FROM CLASS ONE TO
 STANDARD FIVE :ASIANS

AST NUMBER OF PUPILS FROM STANDARD FIVE
 TO MATRIC :ASIANS

TOTA TOTAL NUMBER OF ASIANS AT SCHOOL

BSF NUMBER OF PUPILS FROM CLASS ONE TO
 STANDARD FIVE :AFRICANS

BST NUMBER OF PUPILS FROM STANDARD FIVE
 TO MATRIC :AFRICANS

TOTB TOTAL NUMBER OF AFRICANS AT SCHOOL

Source

South African Statistics 1982, pp 5.14, 5.23, 5.28, 5.32.

NAME OF FILE : SOCS

OAPENWN	OLD AGE PENSIONS :WHITES (NUMBER OF BENEFICIARIES)
OAPENCN	OLD AGE PENSIONS :COLOUREDS (NUMBER OF BENEFICIARIES)
OAPENAN	OLD AGE PENSIONS :ASIANS (NUMBER OF BENEFICIARIES)
OAPENBN	OLD AGE PENSIONS :AFRICANS (NUMBER OF BENEFICIARIES)
TOTOAPN	TOTAL OLD AGE PENSIONS (NUMBER OF BENEFICIARIES)
OAPENWA	OLD AGE PENSIONS :WHITE (AMOUNT)
OAPENCA	OLD AGE PENSIONS :COLOUREDS (AMOUNT)
OAPENAA	OLD AGE PENSIONS :ASIANS (AMOUNT)
OAPENBA	OLD AGE PENSIONS :AFRICANS (AMOUNT)
TOTOAPA	TOTAL OLD AGE PENSIONS (AMOUNT)
DPENWN	DISABILITY PENSIONS :WHITES (NUMBER OF BENEFICIARIES)
DPENCN	DISABILITY PENSIONS :COLOUREDS (NUMBER OF BENEFICIARIES)
DPENAN	DISABILITY PENSIONS :ASIANS (NUMBER OF BENEFICIARIES)

NAME OF FILE : SOCSC

DPENBN	DISABILITY PENSIONS :AFRICANS (NUMBER OF BENEFICIARIES)
TOTDPENN	TOTAL DISABILITY PENSIONS (NUMBER OF BENEFICIARIES)
DPENWA	DISABILITY PENSIONS :WHITES (AMOUNT)
DPENCA	DISABILITY PENSIONS :COLOUREDS (AMOUNT)
DPENAA	DISABILITY PENSIONS :ASIANS (AMOUNT)
DPENBA	DISABILITY PENSIONS :AFRICANS (AMOUNT)
MFGWN	MAINTENANCE AND FOSTER-PARENTS GRANTS :WHITES (NUMBER OF BENEFICIARIES)
MFGCN	MAINTENANCE AND FOSTER-PARENTS GRANTS :COLOUREDS (NUMBER OF BENEFICIARIES)
MFGAN	MAINTENANCE AND FOSTER-PARENTS GRANTS :ASIANS (NUMBER OF BENEFICIARIES)
MFGBN	MAINTENANCE AND FOSTER-PARENTS GRANTS :AFRICANS (NUMBER OF BENEFICIARIES)
MFGWA	MAINTENANCE AND FOSTER-PARENTS GRANTS :WHITES (AMOUNT)
MFGCA	MAINTENANCE AND FOSTER-PARENTS GRANTS :COLOUREDS (AMOUNT)
MFGAA	MAINTENANCE AND FOSTER-PARENTS GRANTS :ASIANS (AMOUNT)

NAME OF FILE : SOCSC

MFGBA	MAINTENANCE AND FOSTER-PARENTS GRANTS :AFRICANS (AMOUNT)	100000
TOTMFGN	TOTAL MAINTENANCE AND FOSTER-PARENTS GRANTS (NUMBER OF BENEFICIARIES)	
TOTMFGA	TOTAL MAINTENANCE AND FOSTER-PARENTS GRANTS (AMOUNT)	100000

Source

South African Statistics 1982, 6.2, 6.3, 6.4.

NAME OF FILE : MANUF

MANTF	TOTAL NUMBER OF MANUFACTURING ESTABLISHMENTS
MANTE	TOTAL NUMBER EMPLOYED IN MANUFACTURING
MANTS	TOTAL SALARY PAID TO WORKERS IN MANUFACTURING
MANTM	TOTAL VALUE OF MATERIALS USED IN MANUFACTURING SECTOR
MANGVO	GROSS VALUE OF OUTPUT FROM MANUFACTURING SECTOR
MANNVO	NET VALUE OF OUTPUT FROM MANUFACTURING SECTOR
MANTST	TOTAL STOCK ON HAND AT THE END OF THE YEAR IN MANUFACTURING SECTOR
MANEB	CAPITAL EXPENDITURE ON BUILDINGS BY MANUFACTURING SECTOR
MANEM	CAPITAL EXPENDITURE ON MACHINERY BY MANUFACTURING SECTOR
MANVB	END VALUE OF LAND AND BUILDINGS IN MANUFACTURING SECTOR
MANVM	END VALUE OF MACHINERY IN MANUFACTURING SECTOR
MANRB	RENT PAID ON LAND AND BUILDINGS BY MANUFACTURING SECTOR
MANRM	RENT PAID ON MACHINERY BY MANUFACTURING SECTOR

NAME OF FILE : MANUF

MANDB DEPRECIATION ON LAND AND BUILDINGS
 OF MANUFACTURING SECTOR

MANDM DEPRECIATION ON MACHINERY OF
 MANUFACTURING SECTOR

MANP PROFIT OF MANUFACTURING SECTOR

Source

South African Statistics 1982, P 12.6.

NAME OF FILE : DCNST

CONF	TOTAL NUMBER OF CONSTRUCTION ESTABLISHMENTS
CONTE	TOTAL NUMBER EMPLOYED IN CONSTRUCTION
CONTS	TOTAL SALARY PAID TO WORKERS IN CONSTRUCTION
CONTM	TOTAL VALUE OF MATERIALS USED IN CONSTRUCTION SECTOR
CONGVO	GROSS VALUE OF OUTPUT FROM CONSTRUCTION SECTOR
CONNVO	NET VALUE OF OUTPUT FROM CONSTRUCTION SECTOR
CONTST	TOTAL STOCK ON HAND AT THE END OF THE YEAR IN CONSTRUCTION SECTOR
CONEB	CAPITAL EXPENDITURE ON BUILDINGS BY CONSTRUCTION SECTOR
CONEM	CAPITAL EXPENDITURE ON MACHINERY BY CONSTRUCTION SECTOR
CONVB	END VALUE OF LAND AND BUILDINGS IN MANUFACTURING SECTOR
CONVM	END VALUE OF MACHINERY IN CONSTRUCTION
CONRB	RENT PAID ON LAND AND BUILDINGS BY CONSTRUCTION SECTOR
CONRM	RENT PAID ON MACHINERY BY CONSTRUCTION SECTOR

NAME OF FILE : DCNST

CONDB DEPRECIATION ON LAND AND BUILDINGS
 OF CONSTRUCTION SECTOR

CONDM DEPRECIATION ON BUILDINGS OF
 CONSTRUCTION SECTOR

CONP PROFIT OF CONSTRUCTION SECTOR

Source

South African Statistics 1982, p 13.6.

NAME OF FILE : TRANSPT

RAILP TOTAL NUMBER OF PASSENGER JOURNEYS
(IN 1000'S OF JOURNEYS)

RAILT TOTAL REVENUE EARNING AND FREE-
-HAULED TRAFFIC (IN MILLION TONS/KM)

HARBOC OVERSEAS CARGO HANDLED BY HARBOURS
(IN 1000'S TONS)

HARBCC COASTWISE CARGO HANDLED BY HARBOURS
(IN 1000'S TONS)

AIRIP INTERNATIONAL PASSENGERS HANDLED
BY AIRWAYS

AIRIF INTERNATIONAL AIRFREIGHT HANDLED BY
AIRWAYS (IN 1000'S KG)

AIRLP LOCAL PASSENGERS HANDLED BY AIRWAYS

AIRLF LOCAL AIRFREIGHT HANDLED BY
AIRWAYS (IN 1000'S KG)

MVLC ALL VEHICLES LICENSED ,EXCEPT
TRACTORS :MOTOR CARS

MVLCC ALL VEHICLES LICENSED ,EXCEPT
TRACTORS :COMMERCIAL VEHICLES

MVLO ALL VEHICLES LICENSED ,EXCEPT
TRACTORS :OTHER

MVTL ALL VEHICLES LICENSED ,EXCEPT
TRACTORS :TOTAL

Source

South African Statistics 1982, pp 17.3, 17.19.

NAME OF FILE : AGRIC

FUA	FARMING UNITS :AREA (IN 1000 HA)
FUN	FARMING UNITS :NUMBER
ACMZ	AGRICULTURAL CROPS :MAIZE (IN TONS)
LSC TL	LIVESTOCK :CATTLE (NUMBER IN 1000's)
LSSHP	LIVESTOCK :SHEEP (NUMBER IN 1000's)
LSPSCTL	LIVESTOCK PRODUCTION :SLAUGHTERINGS OF CATTLE AND CALVES (NUMBER IN 1000's)
LSPSSHP	LIVESTOCK PRODUCTION :SLAUGHTERINGS OF SHEEP AND GOATS (NUMBER IN 1000's)
LSPWOOL	LIVESTOCK PRODUCTION :WOOL SOLD (TONS IN 1000's)
GVAP	GROSS VALUE OF AGRICULTURAL AND PASTORAL PRODUCTION (IN MILLIONS)
IVAP	INDEXES OF THE VOLUME OF AGRICULTURAL AND PASTORAL PRODUCTION

Source

South African Statistics 1982, p 9.4.

NAME OF FILE : GOVT

CUSTDUTY	GOVERNMENT INCOME FROM CUSTOMS
SALLSTAX	GOVERNMENT INCOME FROM SALES DUTY AND SALES TAX
MINEREV	GOVERNMENT REVENUE FROM MINING
EXTOTAL	TOTAL GOVERNMENT REVENUE FROM EXCISE
EXSPIRIT	GOVERNMENT REVENUE FROM SPIRIT EXCISE
EXWINE	GOVERNMENT REVENUE FROM WINE EXCISE
LXBEER	GOVERNMENT REVENUE FROM BEER EXCISE
EXTOBACO	GOVERNMENT REVENUE FROM TOBACCO AND CIGARS EXCISE
EXCIGGS	GOVERNMENT REVENUE FROM CIGARETTES AND CIGARETTE TOBACCO EXCISE
EXCARS	GOVERNMENT REVENUE FROM CAR EXCISE
EXTYRES	GOVERNMENT REVENUE FROM TYRES AND TUBES EXCISE
EXFULL	GOVERNMENT REVENUE FROM MOTOR FUEL EXCISE
LXDLSLL	GOVERNMENT REVENUE FROM DIESEL AND FURNACE OILS EXCISE

NAME OF FILE : GOVT

EXOTRE	GOVERNMENT REVENUE FROM MISCELLANEOUS EXCISE
EXREFUND	GOVERNMENT REFUNDS FROM EXCISE
INTDEBT	GOVERNMENT GROSS INTERNAL DEBT (IN MILLIONS)
EXTDEBT	GOVERNMENT GROSS EXTERNAL DEBT (IN MILLIONS)
STOCKDEBT	GOVERNMENT GROSS STOCK AND BOND DEBT (IN MILLIONS)
TOTDEBT	GOVERNMENT TOTAL GROSS PUBLIC AND SINKING FUND DEBT (IN MILLIONS)
GOVREV	CENTRAL GOVERNMENT TOTAL REVENUE
GOVEXPEN	CENTRAL GOVERNMENT TOTAL EXPENDITURE
EXCHBAL	TOTAL SURPLUS OR DEFICIT, EXCLUDING BORROWING AND DEBT REDEMPTION OF EXCHEQUER ACCOUNT (IN MILLIONS)
EXCHRECP	TOTAL RECEIPTS, EXCLUDING BORROWING FROM EXCHEQUER ACCOUNT (IN MILLIONS)
EXCHISUE	TOTAL ISSUES, EXCLUDING DEBT REDEMPTION FROM EXCHEQUER ACCOUNT (IN MILLIONS)

Sources

South African Statistics 1974, pp 19.5, 19.9.

South African Statistics 1978, p 19.9.

South African Statistics 1982, pp 19.9, 19.13.

South African Reserve Bank Quarterly Bulletin, December 1964, p 23;
June 1970, p 41; September 1976, p 46; September 1980, p 56.

NAME OF FILE : ELECTRIC

NUS NUMBER OF UNITS SOLD (IN MILLIONS
 OF KWH)
CONPCAP CONSUMPTION PER CAPITA (IN KWH)

Source

South African Statistics 1982, P 14.3.

NAME OF FILE : INTTRADE

IMPORTO	IMPORTS FOR AGRICULTURE ,FORESTRY AND FISHING
IMPORTI	IMPORTS FOR MINING AND QUARRYING
IMPORTMA	IMPORTS FOR MANUFACTURING
IMPORT20	IMPORTS OF FOOD
IMPORT21	IMPORTS OF BEVERAGES
IMPORT22	IMPORTS OF TOBACCO
IMPORT23	IMPORTS OF TEXTILES
IMPORT24	IMPORTS OF APPAREL ,FOOTWEAR , ETC
IMPORT25	IMPORTS OF WOOD AND CORK
IMPORT26	IMPORTS OF FURNITURE
IMPORT27	IMPORTS OF PAPER AND PAPER PRODUCTS
IMPORT28	IMPORTS FOR PRINTING ,PUBLISHING AND ALLIED INDUSTRIES
IMPORT29	IMPORTS OF LEATHER AND LEATHER PRODUCTS ,EXCLUDING FOOTWEAR

NAME OF FILE : INTTRADE

IMPORT30	IMPORTS OF RUBBER PRODUCTS
IMPORT31	IMPORTS OF CHEMICALS AND CHEMICAL PRODUCTS
IMPORT32	IMPORTS OF COAL AND PRODUCTS OF PETROLEUM
IMPORT33	IMPORTS OF NON-METALLIC MINERAL PRODUCTS
IMPORT34	IMPORTS OF BASIC METALS
IMPORT35	IMPORTS OF MACHINERY ,EXCEPT ELECTRICAL MACHINERY
IMPORT36	IMPORTS OF ELECTRICAL MACHINERY
EXPORT0	EXPORTS OF AGRICULTURAL ,FORESTRY AND FISHING GOODS
EXPORT1	EXPORTS OF MINING AND QUARRYING GOODS
EXPORTMA	EXPORTS TO MANUFACTURING INDUSTRIES
EXPORT20	EXPORTS OF FOOD
EXPORT21	EXPORTS OF BEVERAGES
EXPORT22	EXPORTS OF TOBACCO

NAME OF FILE : INTRADE

EXPORT23	EXPORTS OF TEXTILES
EXPORT24	EXPORTS OF APPAREL ,FOOTWEAR ,ETC
EXPORT25	EXPORTS OF WOOD AND CORK
EXPORT26	EXPORTS OF FURNITURE
EXPORT27	EXPORTS OF PAPER AND PAPER PRODUCTS
EXPORT28	EXPORTS TO PRINTING ,PUBLISHING AND ALLIED INDUSTRIES
EXPORT29	EXPORTS OF LEATHER AND LEATHER PRODUCTS ,EXCLUDING FOOTWEAR
EXPORT30	EXPORTS OF RUBBER PRODUCTS
EXPORT31	EXPORTS OF CHEMICALS AND CHEMICAL PRODUCTS
EXPORT32	EXPORTS OF COAL AND PRODUCTS OF PETROLEUM
EXPORT33	EXPORTS OF NON-METALLIC MINERAL PRODUCTS
EXPORT34	EXPORTS OF BASIC METALS
EXPORT35	EXPORTS OF METAL PRODUCTS

NAME OF FILE : INTRADE

EXPORT36	EXPORTS OF MACHINERY ,EXCEPT ELECTRICAL MACHINERY
EXPORT37	EXPORTS OF ELECTRICAL MACHINERY
IMPAFCR	IMPORTS FROM AFRICA
IMPEUCR	IMPORTS FROM EUROPE
IMPUKCR	IMPORTS FROM THE UNITED KINGDOM
IMPGECR	IMPORTS FROM GERMANY
IMPITCR	IMPORTS FROM ITALY
IMPFRCR	IMPORTS FROM FRANCE
IMPNTCR	IMPORTS FROM THE NETHERLANDS
IMPSTCR	IMPORTS FROM SWITZERLAND
IMPSWCR	IMPORTS FROM SWEDEN
IMPBLCR	IMPORTS FROM BELGIUM
IMPEOCR	IMPORTS FROM REST OF EUROPE

NAME OF FILE : INTRADE

IMPAMCR	IMPORTS FROM NORTH AND SOUTH AMERICA
IMPUSCR	IMPORTS FROM THE UNITED STATES
IMPCACR	IMPORTS FROM CANADA
IMPAOCR	IMPORTS FROM REST OF AMERICA
IMPJACR	IMPORTS FROM JAPAN
IMPOCCR	IMPORTS FROM OCEANIA
IMPAUCR	IMPORTS FROM AUSTRALIA
IMPOOCR	IMPORTS FROM REST OF OCEANIA
EXPAFCR	EXPORTS TO AFRICA
EXPEUCR	EXPORTS TO EUROPE
EXPUKCR	EXPORTS TO THE UNITED KINGDOM
EXPGECR	EXPORTS TO GERMANY
EXPITCR	EXPORTS TO ITALY

NAME OF FILE : INTRADE

EXPFRCR	EXPORTS TO FRANCE
EXPNTCR	EXPORTS TO THE NETHERLANDS
EXPSTCR	EXPORTS TO SWITZERLAND
EXPSWCR	EXPORTS TO SWEDEN
EXPBLCR	EXPORTS TO BELGIUM
EXPEOCR	EXPORTS TO THE REST OF EUROPE
EXPAMCR	EXPORTS TO NORTH AND SOUTH AMERICA
EXPUSCR	EXPORTS TO THE UNITED STATES
EXPCACR	EXPORTS TO CANADA
EXPAOCR	EXPORTS TO THE REST OF EUROPE
EXPJACR	EXPORTS TO JAPAN
EXPOCCR	EXPORTS TO OCEANIA
EXPAUCR	EXPORTS TO AUSTRALIA

NAME OF FILE : INTTRADE

EXPOOCR	EXPORTS TO THE REST OF OCEANIA
BPEXP	BALANCE OF PAYMENTS :MERCHANDISE EXPORTS ,F.O.B
BPGOLD	BALANCE OF PAYMENTS :NET GOLD OUTPUT
BPSERE	BALANCE OF PAYMENTS :SERVICE RECEIPTS
BPIMP	BALANCE OF PAYMENTS :MERCHANDISE IMPORTS ,F.O.B.
BPSEPY	BALANCE OF PAYMENTS :PAYMENTS FOR SERVICES
BPGDSR	BALANCE OF PAYMENTS :TOTAL GOODS AND SERVICES (NET RECEIPTS)
BPTRAN	BALANCE OF PAYMENTS :TRANSFERS (NET RECEIPTS)
BPBALCA	BALANCE OF PAYMENTS :BALANCE ON CURRENT ACCOUNT
BPLTCAPT	BALANCE OF PAYMENTS :LONG-TERM CAPITAL MOVEMENTS
BPLTCAGV	BALANCE OF PAYMENTS :LONG-TERM CAPITAL MOVEMENTS OF CENTRAL GOVERNMENT AND BANKING SECTOR
BPLTCAPS	BALANCE OF PAYMENTS :LONG-TERM CAPITAL MOVEMENTS OF PUBLIC CORPORATIONS AND THE PRIVATE SECTOR
BPBASIC	BALANCE OF PAYMENTS :BASIC BALANCE

NAME OF FILE : INTRADE

BPSTCAPT BALANCE OF PAYMENTS :SHORT-TERM
CAPITAL MOVEMENTS NOT RELATED TO RESERVES

BPSTCAGV BALANCE OF PAYMENTS :SHORT-TERM
CAPITAL MOVEMENTS OF CENTRAL GOVERNMENT AND BANKING
SECTOR

BPSTCAPS BALANCE OF PAYMENTS :SHORT-TERM
CAPITAL MOVEMENTS OF PUBLIC CORPORATIONS AND THE
PRIVATE SECTOR

BPNETGR BALANCE OF PAYMENTS :CHANGE IN NET
GOLD AND OTHER FOREIGN RESERVES

BPGROSGR BALANCE OF PAYMENTS :CHANGE IN
GROSS GOLD AND OTHER FOREIGN RESERVES

GOLDRES SOUTH AFRICAN GOLD RESERVES

FORRES SOUTH AFRICAN FOREIGN EXCHANGE
RESERVES

TOTRES TOTAL RESERVES AT RESERVE BANK

RAPORATE FOREIGN EXCHANGE RATE :RAND/POUND

RADORATE FOREIGN EXCHANGE RATE :RAND/DOLLAR

GOLDPRDO GOLD PRICE IN DOLLARS

Sources

South African Statistics 1966, pp Q10, Q11, Q12, Q13.

South African Statistics 1972, pp P9, P10, P13, P14.

South African Statistics 1974, pp 16.10, 16.11, 16.12, 16.13,
16.14, 16.15.

South African Statistics 1978, pp 16.10-16.19.

South African Statistics 1982, pp 16.5, 16.11, 16.13, 16.18, 16.19.

South African Reserve Bank Bulletin, September 1983, pp S.69, S.80, S.81.

NAME OF FILE : POFTUTI

TIGEC	TOTAL INVESTMENT OF CENTRAL GOVERNMENT AND BANKING SECTOR :EEC COUNTRIES
TIGE	TOTAL INVESTMENT OF CENTRAL GOVERNMENT AND BANKING SECTOR :REST OF EUROPE
TIGNS	TOTAL INVESTMENT OF CENTRAL GOVERNMENT AND BANKING SECTOR :NORTH AND SOUTH AMERICA
TIGAF	TOTAL INVESTMENT OF CENTRAL GOVERNMENT AND BANKING SECTOR :AFRICA
TIGAS	TOTAL INVESTMENT OF CENTRAL GOVERNMENT AND BANKING SECTOR :ASIA
TIGO	TOTAL INVESTMENT OF CENTRAL GOVERNMENT AND BANKING SECTOR :OCEANIA
TIGIO	TOTAL INVESTMENT OF CENTRAL GOVERNMENT AND BANKING SECTOR :INTERNATIONAL ORGANISATIONS
TIGU	TOTAL INVESTMENT OF CENTRAL GOVERNMENT AND BANKING SECTOR :UNALLOCATED
TIGT	TOTAL INVESTMENT OF CENTRAL GOVERNMENT AND BANKING SECTOR :TOTAL
TIGLEC	TOTAL LONG-TERM INVESTMENT OF CENTRAL GOVERNMENT AND BANKING SECTOR :EEC COUNTRIES
TIGLE	TOTAL LONG-TERM INVESTMENT OF CENTRAL GOVERNMENT AND BANKING SECTOR :REST OF EUROPE
TIGLNS	TOTAL LONG-TERM INVESTMENT OF CENTRAL GOVERNMENT AND BANKING SECTOR :NORTH AND SOUTH AMERICA
TIGLAF	TOTAL LONG-TERM INVESTMENT OF CENTRAL GOVERNMENT AND BANKING SECTOR :AFRICA

NAME OF FILE : FORT.TI

TIGLAS TOTAL LONG-TERM INVESTMENT OF
CENTRAL GOVERNMENT AND BANKING SECTOR :ASIA

TIGLO TOTAL LONG-TERM INVESTMENT OF
CENTRAL GOVERNMENT AND BANKING SECTOR :OCEANIA

TIGLIO TOTAL LONG-TERM INVESTMENT OF
CENTRAL GOVERNMENT AND BANKING SECTOR :INTERNATIONAL
ORGANISATIONS

TIGLU TOTAL LONG-TERM INVESTMENT OF
CENTRAL GOVERNMENT AND BANKING SECTOR :UNALLOCATED

TIGLT TOTAL LONG-TERM INVESTMENT OF
CENTRAL GOVERNMENT AND BANKING SECTOR :TOTAL

TIGSEC TOTAL SHORT-TERM INVESTMENT OF
CENTRAL GOVERNMENT AND BANKING SECTOR :EEC COUNTRIES

TIGSE TOTAL SHORT-TERM INVESTMENT OF
CENTRAL GOVERNMENT AND BANKING SECTOR :REST OF EUROPE

TIGSNS TOTAL SHORT-TERM INVESTMENT OF
CENTRAL GOVERNMENT AND BANKING SECTOR :NORTH AND SOUTH
AMERICA

TIGSAF TOTAL SHORT-TERM INVESTMENT OF
CENTRAL GOVERNMENT AND BANKING SECTOR :AFRICA

TIGSAS TOTAL SHORT-TERM INVESTMENT OF
CENTRAL GOVERNMENT AND BANKING SECTOR :ASIA

TIGSO TOTAL SHORT-TERM INVESTMENT OF
CENTRAL GOVERNMENT AND BANKING SECTOR :OCEANIA

TIGSIO TOTAL SHORT-TERM INVESTMENT OF
CENTRAL GOVERNMENT AND BANKING SECTOR :INTERNATIONAL
ORGANISATIONS

TIGSU TOTAL SHORT-TERM INVESTMENT OF
CENTRAL GOVERNMENT AND BANKING SECTOR :UNALLOCATED

NAME OF FILE : FORTCTI

TIGST TOTAL SHORT-TERM INVESTMENT OF
CENTRAL GOVERNMENT AND BANKING SECTOR :TOTAL

TIPCTEC TOTAL INVESTMENT OF PUBLIC
CORPORATIONS AND LOCAL AUTHORITIES :EEC COUNTRIES

TIPCTE TOTAL INVESTMENT OF PUBLIC
CORPORATIONS AND LOCAL AUTHORITIES :REST OF EUROPE

TIPCTNS TOTAL INVESTMENT OF PUBLIC
CORPORATIONS AND LOCAL AUTHORITIES :NORTH AND SOUTH
AMERICA

TIPCTAF TOTAL INVESTMENT OF PUBLIC
CORPORATIONS AND LOCAL AUTHORITIES :AFRICA

TIPCTAS TOTAL INVESTMENT OF PUBLIC
CORPORATIONS AND LOCAL AUTHORITIES :ASIA

TIPCTO TOTAL INVESTMENT OF PUBLIC
CORPORATIONS AND LOCAL AUTHORITIES :OCEANIA

TIPCTIO TOTAL INVESTMENT OF PUBLIC
CORPORATIONS AND LOCAL AUTHORITIES : INTERNATIONAL
ORGANISATIONS

TIPCTU TOTAL INVESTMENT OF PUBLIC
CORPORATIONS AND LOCAL AUTHORITIES :UNALLOCATED

TIPCTT TOTAL INVESTMENT OF PUBLIC
CORPORATIONS AND LOCAL AUTHORITIES :TOTAL

TIPCLEC TOTAL LONG-TERM INVESTMENT OF
PUBLIC CORPORATIONS AND LOCAL AUTHORITIES :
EEC COUNTRIES

TIPCLE TOTAL LONG-TERM INVESTMENT OF
PUBLIC CORPORATIONS AND LOCAL AUTHORITIES :REST OF
EUROPE

TIPCLNS TOTAL LONG-TERM INVESTMENT OF
PUBLIC CORPORATIONS AND LOCAL AUTHORITIES :NORTH AND
SOUTH AMERICA

NAME OF FILE : FOBTCTI

TIPCLAF TOTAL LONG-TERM INVESTMENT OF
PUBLIC CORPORATIONS AND LOCAL AUTHORITIES :AFRICA

TIPCLAS TOTAL LONG-TERM INVESTMENT OF
PUBLIC CORPORATIONS AND LOCAL AUTHORITIES :ASIA

TIPCLO TOTAL LONG-TERM INVESTMENT OF
PUBLIC CORPORATIONS AND LOCAL AUTHORITIES :OCEANIA

TIPCLIO TOTAL LONG-TERM INVESTMENT OF
PUBLIC CORPORATIONS AND LOCAL AUTHORITIES :
INTERNATIONAL ORGANISATIONS

TIPCLU TOTAL LONG-TERM INVESTMENT OF
PUBLIC CORPORATIONS AND LOCAL AUTHORITIES :UNALLOCATED

TIPCLT TOTAL LONG-TERM INVESTMENT OF
PUBLIC CORPORATIONS AND LOCAL AUTHORITIES :TOTAL

TIPCSEC TOTAL SHORT-TERM INVESTMENT OF
PUBLIC CORPORATIONS AND LOCAL AUTHORITIES :
EEC COUNTRIES

TIPCSE TOTAL SHORT-TERM INVESTMENT OF
PUBLIC CORPORATIONS AND LOCAL AUTHORITIES :REST OF
EUROPE

TIPCSNS TOTAL SHORT-TERM INVESTMENT OF
PUBLIC CORPORATIONS AND LOCAL AUTHORITIES :NORTH AND
SOUTH AMERICA

TIPCSAF TOTAL SHORT-TERM INVESTMENT OF
PUBLIC CORPORATIONS AND LOCAL AUTHORITIES :AFRICA

TIPCSAS TOTAL SHORT-TERM INVESTMENT OF
PUBLIC CORPORATIONS AND LOCAL AUTHORITIES :ASIA

TIPC SO TOTAL SHORT-TERM INVESTMENT OF
PUBLIC CORPORATIONS AND LOCAL AUTHORITIES :OCEANIA

TIPCSIO TOTAL SHORT-TERM INVESTMENT OF
PUBLIC CORPORATIONS AND LOCAL AUTHORITIES :
INTERNATIONAL ORGANISATIONS

NAME OF FILE : FOFTSTI

TIPCSU	TOTAL SHORT-TERM INVESTMENT OF PUBLIC CORPORATIONS AND LOCAL AUTHORITIES :UNALLOCATED
TIPCST	TOTAL SHORT-TERM INVESTMENT OF PUBLIC CORPORATIONS AND LOCAL AUTHORITIES :TOTAL
TIPEC	TOTAL INVESTMENT OF PRIVATE SECTOR :EEC COUNTRIES
TIPE	TOTAL INVESTMENT OF PRIVATE SECTOR :REST OF EUROPE
TIPNS	TOTAL INVESTMENT OF PRIVATE SECTOR :NORTH AND SOUTH AMERICA
TIPAF	TOTAL INVESTMENT OF PRIVATE SECTOR :AFRICA
TIPAS	TOTAL INVESTMENT OF PRIVATE SECTOR :ASIA
TIPO	TOTAL INVESTMENT OF PRIVATE SECTOR :OCEANIA
TIPIO	TOTAL INVESTMENT OF PRIVATE SECTOR :INTERNATIONAL ORGANISATIONS
TIPU	TOTAL INVESTMENT OF PRIVATE SECTOR :UNALLOCATED
TIPT	TOTAL INVESTMENT OF PRIVATE SECTOR :TOTAL
TIPLEC	TOTAL LONG-TERM INVESTMENT OF PRIVATE SECTOR :EEC COUNTRIES
TIPLE	TOTAL LONG-TERM INVESTMENT OF PRIVATE SECTOR :REST OF EUROPE

NAME OF FILE : FORTOTI

TIPLNS	TOTAL LONG-TERM INVESTMENT OF PRIVATE SECTOR :NORTH AND SOUTH AMERICA
TIPLAF	TOTAL LONG-TERM INVESTMENT OF PRIVATE SECTOR :AFRICA
TIPLAS	TOTAL LONG-TERM INVESTMENT OF PRIVATE SECTOR :ASIA
TIPLO	TOTAL LONG-TERM INVESTMENT OF PRIVATE SECTOR :OCEANIA
TIPLIO	TOTAL LONG-TERM INVESTMENT OF PRIVATE SECTOR :INTERNATIONAL ORGANISATIONS
TIPLU	TOTAL LONG-TERM INVESTMENT OF PRIVATE SECTOR :UNALLOCATED
TIPLT	TOTAL LONG-TERM INVESTMENT OF PRIVATE SECTOR :TOTAL
TIPOLEC	TOTAL INVESTMENT IN ORDINARY AND OTHER SHARES BY PRIVATE SECTOR :EEC COUNTRIES
TIPOLE	TOTAL INVESTMENT IN ORDINARY AND OTHER SHARES BY PRIVATE SECTOR :REST OF EUROPE
TIPOLE	TOTAL INVESTMENT IN ORDINARY AND OTHER SHARES BY PRIVATE SECTOR :REST OF EUROPE
TIPOLNS	TOTAL INVESTMENT IN ORDINARY AND OTHER SHARES BY PRIVATE SECTOR :NORTH AND SOUTH AMERICA
TIPOLAF	TOTAL INVESTMENT IN ORDINARY AND OTHER SHARES BY PRIVATE SECTOR :AFRICA
TIPOLAS	TOTAL INVESTMENT IN ORDINARY AND OTHER SHARES BY PRIVATE SECTOR :ASIA

NAME OF FILE : FORTCTI

TIPOLO	TOTAL INVESTMENT IN ORDINARY AND OTHER SHARES BY PRIVATE SECTOR : OCEANIA
TIPOLIO	TOTAL INVESTMENT IN ORDINARY AND OTHER SHARES BY PRIVATE SECTOR : INTERNATIONAL ORGANISATIONS
TIPOLU	TOTAL INVESTMENT IN ORDINARY AND OTHER SHARES BY PRIVATE SECTOR : UNALLOCATED
TIPOLT	TOTAL INVESTMENT IN ORDINARY AND OTHER SHARES BY PRIVATE SECTOR : TOTAL
TIPSLEC	TOTAL INVESTMENT IN SHARE PREMIUM, RESERVES AND UNDISTRIBUTED PROFIT BY PRIVATE SECTOR : EEC COUNTRIES
TIPSLE	TOTAL INVESTMENT IN SHARE PREMIUM, RESERVES AND UNDISTRIBUTED PROFIT BY PRIVATE SECTOR : REST OF EUROPE
TIPSLNS	TOTAL INVESTMENT IN SHARE PREMIUM, RESERVES AND UNDISTRIBUTED PROFIT BY PRIVATE SECTOR : NORTH AND SOUTH AMERICA
TIPSLAF	TOTAL INVESTMENT IN SHARE PREMIUM, RESERVES AND UNDISTRIBUTED PROFIT BY PRIVATE SECTOR : AFRICA
TIPSLAS	TOTAL INVESTMENT IN SHARE PREMIUM, RESERVES AND UNDISTRIBUTED PROFIT BY PRIVATE SECTOR : ASIA
TIPSLO	TOTAL INVESTMENT IN SHARE PREMIUM, RESERVES AND UNDISTRIBUTED PROFIT BY PRIVATE SECTOR : OCEANIA
TIPSLIO	TOTAL INVESTMENT IN SHARE PREMIUM, RESERVES AND UNDISTRIBUTED PROFIT BY PRIVATE SECTOR : INTERNATIONAL ORGANISATIONS
TIPSLU	TOTAL INVESTMENT IN SHARE PREMIUM, RESERVES AND UNDISTRIBUTED PROFIT BY PRIVATE SECTOR : UNALLOCATED
TIPSLT	TOTAL INVESTMENT IN SHARE PREMIUM, RESERVES AND UNDISTRIBUTED PROFIT BY PRIVATE SECTOR : TOTAL

NAME OF FILE : FOFTCTI

TIPBLEC	TOTAL INVESTMENT IN BRANCH AND PARTNERSHIP BALANCES BY PRIVATE SECTOR :EEC COUNTRIES
TIPBLE	TOTAL INVESTMENT IN BRANCH AND PARTNERSHIP BALANCES BY PRIVATE SECTOR :REST OF EUROPE
TIPBLNS	TOTAL INVESTMENT IN BRANCH AND PARTNERSHIP BALANCES BY PRIVATE SECTOR :NORTH AND SOUTH AMERICA
TIPBLAF	TOTAL INVESTMENT IN BRANCH AND PARTNERSHIP BALANCES BY PRIVATE SECTOR :AFRICA
TIPBLAS	TOTAL INVESTMENT IN BRANCH AND PARTNERSHIP BALANCES BY PRIVATE SECTOR :ASIA
TIPBLO	TOTAL INVESTMENT IN BRANCH AND PARTNERSHIP BALANCES BY PRIVATE SECTOR :OCEANIA
TIPBLIO	TOTAL INVESTMENT IN BRANCH AND PARTNERSHIP BALANCES BY PRIVATE SECTOR :INTERNATIONAL ORGANISATIONS
TIPBLU	TOTAL INVESTMENT IN BRANCH AND PARTNERSHIP BALANCES BY PRIVATE SECTOR :UNALLOCATED
TIPBLT	TOTAL INVESTMENT IN BRANCH AND PARTNERSHIP BALANCES BY PRIVATE SECTOR :TOTAL
TIPDLEC	TOTAL INVESTMENT IN DEBENTURES, LOAN STOCK AND SIMILAR SECURITIES BY PRIVATE SECTOR : EEC COUNTRIES
TIPDLE	TOTAL INVESTMENT IN DEBENTURES, LOAN STOCK AND SIMILAR SECURITIES BY PRIVATE SECTOR : REST OF EUROPE
TIPDLNS	TOTAL INVESTMENT IN DEBENTURES, LOAN STOCK AND SIMILAR SECURITIES BY PRIVATE SECTOR : NORTH AND SOUTH AMERICA
TIPDLAF	TOTAL INVESTMENT IN DEBENTURES, LOAN STOCK AND SIMILAR SECURITIES BY PRIVATE SECTOR : AFRICA

NAME OF FILE : FORTETI

TIPDLAS	TOTAL INVESTMENT IN DEBENTURES, LOAN STOCK AND SIMILAR SECURITIES BY PRIVATE SECTOR : ASIA
TIPDLO	TOTAL INVESTMENT IN DEBENTURES, LOAN STOCK AND SIMILAR SECURITIES BY PRIVATE SECTOR : OCEANIA
TIPDLIO	TOTAL INVESTMENT IN DEBENTURES, LOAN STOCK AND SIMILAR SECURITIES BY PRIVATE SECTOR : INTERNATIONAL ORGANISATIONS
TIPDLU	TOTAL INVESTMENT IN DEBENTURES, LOAN STOCK AND SIMILAR SECURITIES BY PRIVATE SECTOR : UNALLOCATED
TIPDLT	TOTAL INVESTMENT IN DEBENTURES, LOAN STOCK AND SIMILAR SECURITIES BY PRIVATE SECTOR : TOTAL
TIPMLEC	TOTAL INVESTMENT IN MORTGAGES AND LONG-TERM LOANS BY PRIVATE SECTOR :EEC COUNTRIES
TIPMLE	TOTAL INVESTMENT IN MORTGAGES AND LONG-TERM LOANS BY PRIVATE SECTOR :REST OF EUROPE
TIPMLNS	TOTAL INVESTMENT IN MORTGAGES AND LONG-TERM LOANS BY PRIVATE SECTOR :NORTH AND SOUTH AMERICA
TIPMLAF	TOTAL INVESTMENT IN MORTGAGES AND LONG-TERM LOANS BY PRIVATE SECTOR :AFRICA
TIPMLAS	TOTAL INVESTMENT IN MORTGAGES AND LONG-TERM LOANS BY PRIVATE SECTOR :ASIA
TIPMLO	TOTAL INVESTMENT IN MORTGAGES AND LONG-TERM LOANS BY PRIVATE SECTOR :OCEANIA
TIPMLIO	TOTAL INVESTMENT IN MORTGAGES AND LONG-TERM LOANS BY PRIVATE SECTOR :INTERNATIONAL ORGANISATIONS
TIPMLU	TOTAL INVESTMENT IN MORTGAGES AND LONG-TERM LOANS BY PRIVATE SECTOR :UNALLOCATED

NAME OF FILE : FORTCTI

TIPMLT	TOTAL INVESTMENT IN MORTGAGES AND LONG-TERM LOANS BY PRIVATE SECTOR :TOTAL
TIPALEC	OTHER TOTAL INVESTMENT BY PRIVATE SECTOR :EEC COUNTRIES
TIPALE	OTHER TOTAL INVESTMENT BY PRIVATE SECTOR :REST OF EUROPE
TIPALNS	OTHER TOTAL INVESTMENT BY PRIVATE SECTOR :NORTH AND SOUTH AMERICA
TIPALAF	OTHER TOTAL INVESTMENT BY PRIVATE SECTOR :AFRICA
TIPALAS	OTHER TOTAL INVESTMENT BY PRIVATE SECTOR :ASIA
TIPALO	OTHER TOTAL INVESTMENT BY PRIVATE SECTOR :OCEANIA
TIPALIO	OTHER TOTAL INVESTMENT BY PRIVATE SECTOR :INTERNATIONAL ORGANISATIONS
TIPALU	OTHER TOTAL INVESTMENT BY PRIVATE SECTOR :UNALLOCATED
TIPALT	OTHER TOTAL INVESTMENT BY PRIVATE SECTOR :TOTAL
TIPSEC	TOTAL SHORT-TERM INVESTMENT OF PRIVATE SECTOR :EEC COUNTRIES
TIPSE	TOTAL SHORT-TERM INVESTMENT OF PRIVATE SECTOR :REST OF EUROPE
TIPSNS	TOTAL SHORT-TERM INVESTMENT OF PRIVATE SECTOR :NORTH AND SOUTH AMERICA

NAME OF FILE : FORTOTI

TIPSAF	TOTAL SHORT-TERM INVESTMENT OF PRIVATE SECTOR :AFRICA
TIPSAS	TOTAL SHORT-TERM INVESTMENT OF PRIVATE SECTOR :ASIA
TIPSO	TOTAL SHORT-TERM INVESTMENT OF PRIVATE SECTOR :OCEANIA
TIPSIO	TOTAL SHORT-TERM INVESTMENT OF PRIVATE SECTOR:INTERNATIONAL ORGANISATIONS
TIPSU	TOTAL SHORT-TERM INVESTMENT OF PRIVATE SECTOR :UNALLOCATED
TIPST	TOTAL SHORT-TERM INVESTMENT OF PRIVATE SECTOR :TOTAL
TOTFLEC	TOTAL FOREIGN LIABILITIES : EEC COUNTRIES
TOTFLE	TOTAL FOREIGN LIABILITIES : REST OF EUROPE
TOTFLNS	TOTAL FOREIGN LIABILITIES : NORTH AND SOUTH AMERICA
TOTFLAF	TOTAL FOREIGN LIABILITIES : AFRICA
TOTFLAS	TOTAL FOREIGN LIABILITIES : ASIA
TOTFLO	TOTAL FOREIGN LIABILITIES : OCEANIA

NAME OF FILE : FORTOTI

TOTFLIO	TOTAL FOREIGN LIABILITIES : INTERNATIONAL ORGANISATIONS
TOTFLU	TOTAL FOREIGN LIABILITIES : UNALLOCATED
TOTFLT	TOTAL FOREIGN LIABILITIES : TOTAL

Source

"A Statistical Presentation of South Africa's Liabilities and Assets, 1956 to 1981", Supplement to South African Reserve Bank Bulletin, June 1983.

NAME OF FILE : FORDI

DIGVTEC	DIRECT INVESTMENT OF CENTRAL GOVERNMENT AND BANKING SECTOR :EEC COUNTRIES
DIGVTE	DIRECT INVESTMENT OF CENTRAL GOVERNMENT AND BANKING SECTOR :REST OF EUROPE
DIGVTNS	DIRECT INVESTMENT OF CENTRAL GOVERNMENT AND BANKING SECTOR :NORTH AND SOUTH AMERICA
DIGVTNS	DIRECT INVESTMENT OF CENTRAL GOVERNMENT AND BANKING SECTOR :NORTH AND SOUTH AMERICA
DIGVTAF	DIRECT INVESTMENT OF CENTRAL GOVERNMENT AND BANKING SECTOR :AFRICA
DIGVTAS	DIRECT INVESTMENT OF CENTRAL GOVERNMENT AND BANKING SECTOR :ASIA
DIGVTO	DIRECT INVESTMENT OF CENTRAL GOVERNMENT AND BANKING SECTOR :OCEANIA
DIGVTIO	DIRECT INVESTMENT OF CENTRAL GOVERNMENT AND BANKING SECTOR :INTERNATIONAL ORGANISATIONS
DIGVTU	DIRECT INVESTMENT OF CENTRAL GOVERNMENT AND BANKING SECTOR :UNALLOCATED
DIGVTT	DIRECT INVESTMENT OF CENTRAL GOVERNMENT AND BANKING SECTOR :TOTAL
DIGVTEC	DIRECT LONG-TERM INVESTMENT OF CENTRAL GOVERNMENT AND BANKING SECTOR :EEC COUNTRIES
DIGVTLE	DIRECT LONG-TERM INVESTMENT OF CENTRAL GOVERNMENT AND BANKING SECTOR: REST OF EUROPE
DIGVTLNS	DIRECT LONG-TERM INVESTMENT OF CENTRAL GOVERNMENT AND BANKING SECTOR :NORTH AND SOUTH AMERICA

NAME OF FILE : PCRDI

DIGVTLAF	DIRECT LONG-TERM INVESTMENT OF CENTRAL GOVERNMENT AND BANKING SECTOR :AFRICA
DIGVTLAS	DIRECT LONG-TERM INVESTMENT OF CENTRAL GOVERNMENT AND BANKING SECTOR :ASIA
DIGVTLO	DIRECT LONG-TERM INVESTMENT OF CENTRAL GOVERNMENT AND BANKING SECTOR :OCEANIA
DIGVTLU	DIRECT LONG-TERM INVESTMENT OF CENTRAL GOVERNMENT AND BANKING SECTOR :UNALLOCATED
DIGVTLT	DIRECT LONG-TERM INVESTMENT OF CENTRAL GOVERNMENT AND BANKING SECTOR :TOTAL
DIGVTSEC	DIRECT SHORT-TERM INVESTMENT OF CENTRAL GOVERNMENT AND BANKING SECTOR :EEC COUNTRIES
DIGVTSE	DIRECT SHORT-TERM INVESTMENT OF CENTRAL GOVERNMENT AND BANKING SECTOR :REST OF EUROPE
DIGVTSNS	DIRECT SHORT-TERM INVESTMENT OF CENTRAL GOVERNMENT AND BANKING SECTOR :NORTH AND SOUTH AMERICA
DIGVTSAF	DIRECT SHORT-TERM INVESTMENT OF CENTRAL GOVERNMENT AND BANKING SECTOR :AFRICA
DIGVTSAS	DIRECT SHORT-TERM INVESTMENT OF CENTRAL GOVERNMENT AND BANKING SECTOR :ASIA
DIGVTSO	DIRECT SHORT-TERM INVESTMENT OF CENTRAL GOVERNMENT AND BANKING SECTOR :OCEANIA
DIGVTSIO	DIRECT SHORT-TERM INVESTMENT OF CENTRAL GOVERNMENT AND BANKING SECTOR :INTERNATIONAL ORGANISATIONS
DIGVTSU	DIRECT SHORT-TERM INVESTMENT OF CENTRAL GOVERNMENT AND BANKING SECTOR :UNALLOCATED

NAME OF FILE : FORDI

DIGVTST	DIRECT SHORT-TERM INVESTMENT OF CENTRAL GOVERNMENT AND BANKING SECTOR :TOTAL
DIPVTEC	DIRECT INVESTMENT OF PRIVATE SECTOR :EEC COUNTRIES
DIPVTE	DIRECT INVESTMENT OF PRIVATE SECTOR :REST OF EUROPE
DIPVTNS	DIRECT INVESTMENT OF PRIVATE SECTOR :NORTH AND SOUTH AMERICA
DIPVTAF	DIRECT INVESTMENT OF PRIVATE SECTOR :AFRICA
DIPVTAS	DIRECT INVESTMENT OF PRIVATE SECTOR :ASIA
DIPVTO	DIRECT INVESTMENT OF PRIVATE SECTOR :OCEANIA
DIPVTIO	DIRECT INVESTMENT OF PRIVATE SECTOR :INTERNATIONAL ORGANISATIONS
DIPVTU	DIRECT INVESTMENT OF PRIVATE SECTOR :UNALLOCATED
DIPVTT	DIRECT INVESTMENT OF PRIVATE SECTOR :TOTAL
DIPLEC	DIRECT LONG-TERM INVESTMENT OF PRIVATE SECTOR :EEC COUNTRIES
DIPLE	DIRECT LONG-TERM INVESTMENT OF PRIVATE SECTOR :REST OF EUROPE
DIPLNS	DIRECT LONG-TERM INVESTMENT OF PRIVATE SECTOR :NORTH AND SOUTH AMERICA

NAME OF FILE : PCRDI

DIPLAF DIRECT LONG-TERM INVESTMENT OF
PRIVATE SECTOR :AFRICA

DIPLAS DIRECT LONG-TERM INVESTMENT OF
PRIVATE SECTOR :ASIA

DIPLO DIRECT LONG-TERM INVESTMENT OF
PRIVATE SECTOR :OCEANIA

DIPLIO DIRECT LONG-TERM INVESTMENT OF
PRIVATE SECTOR :INTERNATIONAL ORGANISATIONS

DIPLU DIRECT LONG-TERM INVESTMENT OF
PRIVATE SECTOR :UNALLOCATED

DIPLT DIRECT LONG-TERM INVESTMENT OF
PRIVATE SECTOR :TOTAL

DIPOSLEC DIRECT INVESTMENT IN ORDINARY AND
OTHER SHARES BY PRIVATE SECTOR :EEC COUNTRIES

DIPOSLE DIRECT INVESTMENT IN ORDINARY AND
OTHER SHARES BY PRIVATE SECTOR :REST OF EUROPE

DIPOSLS DIRECT INVESTMENT IN ORDINARY AND
OTHER SHARES BY PRIVATE SECTOR :NORTH AND SOUTH
AMERICA

DIPOSRAF DIRECT INVESTMENT IN ORDINARY AND
OTHER SHARES BY PRIVATE SECTOR :AFRICA

DIPOSRAS DIRECT INVESTMENT IN ORDINARY AND
OTHER SHARES BY PRIVATE SECTOR :ASIA

DIPOSLO DIRECT INVESTMENT IN ORDINARY AND
OTHER SHARES BY PRIVATE SECTOR :OCEANIA

DIPOSLIO DIRECT INVESTMENT IN ORDINARY AND
OTHER SHARES BY PRIVATE SECTOR :INTERNATIONAL
ORGANISATIONS

NAME OF FILE : FORDI

DIOSLU	DIRECT INVESTMENT IN ORDINARY AND OTHER SHARES BY PRIVATE SECTOR :UNALLOCATED
DIOSLT	DIRECT INVESTMENT IN ORDINARY AND OTHER SHARES BY PRIVATE SECTOR :TOTAL
DIPSPLEC	DIRECT INVESTMENT IN SHARE PREMIUM, RESERVES AND UNDISTRIBUTED PROFIT BY PRIVATE SECTOR : EEC COUNTRIES
DIPSPLE	DIRECT INVESTMENT IN SHARE PREMIUM, RESERVES AND UNDISTRIBUTED PROFIT BY PRIVATE SECTOR : REST OF EUROPE
DIPSPLNS	DIRECT INVESTMENT IN SHARE PREMIUM, RESERVES AND UNDISTRIBUTED PROFIT BY PRIVATE SECTOR : NORTH AND SOUTH AMERICA
DIPSPLAF	DIRECT INVESTMENT IN SHARE PREMIUM, RESERVES AND UNDISTRIBUTED PROFIT BY PRIVATE SECTOR : AFRICA
DIPSPLAS	DIRECT INVESTMENT IN SHARE PREMIUM, RESERVES AND UNDISTRIBUTED PROFIT BY PRIVATE SECTOR : ASIA
DIPSPLO	DIRECT INVESTMENT IN SHARE PREMIUM, RESERVES AND UNDISTRIBUTED PROFIT BY PRIVATE SECTOR : OCEANIA
DIPSPLIO	DIRECT INVESTMENT IN SHARE PREMIUM, RESERVES AND UNDISTRIBUTED PROFIT BY PRIVATE SECTOR : INTERNATIONAL ORGANISATIONS
DIPSPLU	DIRECT INVESTMENT IN SHARE PREMIUM, RESERVES AND UNDISTRIBUTED PROFIT BY PRIVATE SECTOR : UNALLOCATED
DIPSPLT	DIRECT INVESTMENT IN SHARE PREMIUM, RESERVES AND UNDISTRIBUTED PROFIT BY PRIVATE SECTOR : TOTAL
DIPBPLEC	DIRECT INVESTMENT IN BRANCH AND PARTNERSHIP BALANCES BY PRIVATE SECTOR :EEC COUNTRIES
DIPBPLE	DIRECT INVESTMENT IN BRANCH AND PARTNERSHIP BALANCES BY PRIVATE SECTOR :REST OF EUROPE

NAME OF FILE : FORDI

DIPBPLNS DIRECT INVESTMENT IN BRANCH AND
PARTNERSHIP BALANCES BY PRIVATE SECTOR :NORTH AND
SOUTH AMERICA

DIPBPLAF DIRECT INVESTMENT IN BRANCH AND
PARTNERSHIP BALANCES BY PRIVATE SECTOR :AFRICA

DIPBPLAS DIRECT INVESTMENT IN BRANCH AND
PARTNERSHIP BALANCES BY PRIVATE SECTOR :ASIA

DIPBPLO DIRECT INVESTMENT IN BRANCH AND
PARTNERSHIP BALANCES BY PRIVATE SECTOR :OCEANIA

DIPBPLIO DIRECT INVESTMENT IN BRANCH AND
PARTNERSHIP BALANCES BY PRIVATE SECTOR :INTERNATIONAL
ORGANISATIONS

DIPBPLU DIRECT INVESTMENT IN BRANCH AND
PARTNERSHIP BALANCES BY PRIVATE SECTOR :UNALLOCATED

DIPBPLT DIRECT INVESTMENT IN BRANCH AND
PARTNERSHIP BALANCES BY PRIVATE SECTOR :TOTAL

DIPDLLEC DIRECT INVESTMENT IN DEBENTURES,
LOAN STOCK AND SIMILAR SECURITIES BY PRIVATE SECTOR :
EEC COUNTRIES

DIPDLLE DIRECT INVESTMENT IN DEBENTURES,
LOAN STOCK AND SIMILAR SECURITIES BY PRIVATE SECTOR :
REST OF EUROPE

DIPDLLNS DIRECT INVESTMENT IN DEBENTURES,
LOAN STOCK AND SIMILAR SECURITIES BY PRIVATE SECTOR :
NORTH AND SOUTH AMERICA

DIPDLLAF DIRECT INVESTMENT IN DEBENTURES,
LOAN STOCK AND SIMILAR SECURITIES BY PRIVATE SECTOR :
AFRICA

DIPDLLAS DIRECT INVESTMENT IN DEBENTURES,
LOAN STOCK AND SIMILAR SECURITIES BY PRIVATE SECTOR :
ASIA

NAME OF FILE : FORDI

DIPDLLO	DIRECT INVESTMENT IN DEBENTURES, LOAN STOCK AND SIMILAR SECURITIES BY PRIVATE SECTOR : OCEANIA
DIPDLLIO	DIRECT INVESTMENT IN DEBENTURES, LOAN STOCK AND SIMILAR SECURITIES BY PRIVATE SECTOR : INTERNATIONAL ORGANISATIONS
DIPDLLU	DIRECT INVESTMENT IN DEBENTURES, LOAN STOCK AND SIMILAR SECURITIES BY PRIVATE SECTOR : UNALLOCATED
DIPDLLT	DIRECT INVESTMENT IN DEBENTURES, LOAN STOCK AND SIMILAR SECURITIES BY PRIVATE SECTOR : TOTAL
DIPMLLEC	DIRECT INVESTMENT IN MORTGAGES AND LONG-TERM LOANS BY PRIVATE SECTOR :EEC COUNTRIES
DIPMLLE	DIRECT INVESTMENT IN MORTGAGES AND LONG-TERM LOANS BY PRIVATE SECTOR :REST OF EUROPE
DIPMLLNS	DIRECT INVESTMENT IN MORTGAGES AND LONG-TERM LOANS BY PRIVATE SECTOR :NORTH AND SOUTH AMERICA
DIPMLLAF	DIRECT INVESTMENT IN MORTGAGES AND LONG-TERM LOANS BY PRIVATE SECTOR :AFRICA
DIPMLLAS	DIRECT INVESTMENT IN MORTGAGES AND LONG-TERM LOANS BY PRIVATE SECTOR :ASIA
DIPMLLO	DIRECT INVESTMENT IN MORTGAGES AND LONG-TERM LOANS BY PRIVATE SECTOR :OCEANIA
DIPMLLU	DIRECT INVESTMENT IN MORTGAGES AND LONG-TERM LOANS BY PRIVATE SECTOR :UNALLOCATED
DIPMLLIO	DIRECT INVESTMENT IN MORTGAGES AND LONG-TERM LOANS BY PRIVATE SECTOR :INTERNATIONAL ORGANISATIONS
DIPMLLT	DIRECT INVESTMENT IN MORTGAGES AND LONG-TERM LOANS BY PRIVATE SECTOR :TOTAL

NAME OF FILE : FORDI

DIPOLEC	OTHER DIRECT INVESTMENT BY PRIVATE SECTOR :EEC COUNTRIES
DIPOLE	OTHER DIRECT INVESTMENT BY PRIVATE SECTOR :REST OF EUROPE
DIPOLNS	OTHER DIRECT INVESTMENT BY PRIVATE SECTOR :NORTH AND SOUTH AMERICA
DIPOLAF	OTHER DIRECT INVESTMENT BY PRIVATE SECTOR :AFRICA
DIPOLAS	OTHER DIRECT INVESTMENT BY PRIVATE SECTOR :ASIA
DIPOLO	OTHER DIRECT INVESTMENT BY PRIVATE SECTOR :OCEANIA
DIPOLIO	OTHER DIRECT INVESTMENT BY PRIVATE SECTOR :INTERNATIONAL ORGANISATIONS
DIPOLU	OTHER DIRECT INVESTMENT BY PRIVATE SECTOR :UNALLOCATED
DIPOLT	OTHER DIRECT INVESTMENT BY PRIVATE SECTOR :TOTAL
DIPSEC	DIRECT SHORT-TERM INVESTMENT BY PRIVATE SECTOR :EEC COUNTRIES
DIPSE	DIRECT SHORT-TERM INVESTMENT BY PRIVATE SECTOR :REST OF EUROPE
DIPSNS	DIRECT SHORT-TERM INVESTMENT BY PRIVATE SECTOR :NORTH AND SOUTH AMERICA
DIPSAF	DIRECT SHORT-TERM INVESTMENT BY PRIVATE SECTOR :AFRICA

NAME OF FILE : FORDI

DIPSAS	DIRECT SHORT-TERM INVESTMENT BY PRIVATE SECTOR :ASIA
DIPSO	DIRECT SHORT-TERM INVESTMENT BY PRIVATE SECTOR :OCEANIA
DIPSIO	DIRECT SHORT-TERM INVESTMENT BY PRIVATE SECTOR :INTERNATIONAL ORGANISATIONS
DIPSU	DIRECT SHORT-TERM INVESTMENT BY PRIVATE SECTOR :UNALLOCATED
DIPST	DIRECT SHORT-TERM INVESTMENT BY PRIVATE SECTOR :TOTAL
DITEC	TOTAL DIRECT INVESTMENT : EEC COUNTRIES
DITE	TOTAL DIRECT INVESTMENT : REST OF EUROPE
DITNS	TOTAL DIRECT INVESTMENT : NORTH AND SOUTH AMERICA
DITAF	TOTAL DIRECT INVESTMENT :AFRICA
DITAS	TOTAL DIRECT INVESTMENT :ASIA
DITO	TOTAL DIRECT INVESTMENT :OCEANIA
DITIO	TOTAL DIRECT INVESTMENT : INTERNATIONAL ORGANISATIONS
DITU	TOTAL DIRECT INVESTMENT : UNALLOCATED

NAME OF FILE : FORDI

DITT	TOTAL DIRECT INVESTMENT :TOTAL
DIPSO	DIRECT SHORT-TERM INVESTMENT BY PRIVATE SECTOR :OCEANIA
DIPSIO	DIRECT SHORT-TERM INVESTMENT BY PRIVATE SECTOR :INTERNATIONAL ORGANISATIONS
DIPSU	DIRECT SHORT-TERM INVESTMENT BY PRIVATE SECTOR :UNALLOCATED
DIPST	DIRECT SHORT-TERM INVESTMENT BY PRIVATE SECTOR :TOTAL
DITEC	TOTAL DIRECT INVESTMENT : EEC COUNTRIES
DITE	TOTAL DIRECT INVESTMENT : REST OF EUROPE
DIINS	TOTAL DIRECT INVESTMENT : NORTH AND SOUTH AMERICA
DITAF	TOTAL DIRECT INVESTMENT :AFRICA
DITAS	TOTAL DIRECT INVESTMENT :ASIA
DITO	TOTAL DIRECT INVESTMENT :OCEANIA
DITIO	TOTAL DIRECT INVESTMENT : INTERNATIONAL ORGANISATIONS

NAME OF FILE : FORDI

DITU TOTAL DIRECT INVESTMENT : UNALLOCATED

DITT TOTAL DIRECT INVESTMENT : TOTAL

Source

"A Statistical Presentation of South Africa's Liabilities and Assets, 1956 to 1981", Supplement to South African Reserve Bank Bulletin, June 1983.

NAME OF FILE : FORNDI

NDIGTEC	NON-DIRECT INVESTMENT OF CENTRAL GOVERNMENT AND BANKING SECTOR :EEC COUNTRIES
NDIGTE	NON-DIRECT INVESTMENT OF CENTRAL GOVERNMENT AND BANKING SECTOR :REST OF EUROPE
NDIGTNS	NON-DIRECT INVESTMENT OF CENTRAL GOVERNMENT AND BANKING SECTOR :NORTH AND SOUTH AMERICA
NDIGTAF	NON-DIRECT INVESTMENT OF CENTRAL GOVERNMENT AND BANKING SECTOR :AFRICA
NDIGTAS	NON-DIRECT INVESTMENT OF CENTRAL GOVERNMENT AND BANKING SECTOR :ASIA
NDIGTO	NON-DIRECT INVESTMENT OF CENTRAL GOVERNMENT AND BANKING SECTOR :OCEANIA
NDIGTIO	NON-DIRECT INVESTMENT OF CENTRAL GOVERNMENT AND BANKING SECTOR :INTERNATIONAL ORGANISATIONS
NDIGTU	NON-DIRECT INVESTMENT OF CENTRAL GOVERNMENT AND BANKING SECTOR :UNALLOCATED
NDIGTT	NON-DIRECT INVESTMENT OF CENTRAL GOVERNMENT AND BANKING SECTOR :TOTAL
NDIGLEC	NON-DIRECT LONG-TERM INVESTMENT OF CENTRAL GOVERNMENT AND BANKING SECTOR :EEC COUNTRIES
NDIGLE	NON-DIRECT LONG-TERM INVESTMENT OF CENTRAL GOVERNMENT AND BANKING SECTOR :REST OF EUROPE
NDIGLNS	NON-DIRECT LONG-TERM INVESTMENT OF CENTRAL GOVERNMENT AND BANKING SECTOR :NORTH AND SOUTH AMERICA
NDIGLAF	NON-DIRECT LONG-TERM INVESTMENT OF CENTRAL GOVERNMENT AND BANKING SECTOR :AFRICA

NAME OF FILE : FORNDI

NDIGLAS	NON-DIRECT LONG-TERM INVESTMENT OF CENTRAL GOVERNMENT AND BANKING SECTOR :ASIA
NDIGLO	NON-DIRECT LONG-TERM INVESTMENT OF CENTRAL GOVERNMENT AND BANKING SECTOR :OCEANIA
NDICLIO	NON-DIRECT LONG-TERM INVESTMENT OF CENTRAL GOVERNMENT AND BANKING SECTOR :INTERNATIONAL ORGANISATIONS
NDIGLU	NON-DIRECT LONG-TERM INVESTMENT OF CENTRAL GOVERNMENT AND BANKING SECTOR :UNALLOCATED
NDIGLT	NON-DIRECT LONG-TERM INVESTMENT OF CENTRAL GOVERNMENT AND BANKING SECTOR :TOTAL
NDIGSEC	NON-DIRECT SHORT-TERM INVESTMENT OF CENTRAL GOVERNMENT AND BANKING SECTOR :EEC COUNTRIES
NDIGSE	NON-DIRECT SHORT-TERM INVESTMENT OF CENTRAL GOVERNMENT AND BANKING SECTOR :REST OF EUROPE
NDIGSNS	NON-DIRECT SHORT-TERM INVESTMENT OF CENTRAL GOVERNMENT AND BANKING SECTOR :NORTH AND SOUTH AMERICA
NDIGSAF	NON-DIRECT SHORT-TERM INVESTMENT OF CENTRAL GOVERNMENT AND BANKING SECTOR :AFRICA
NDIGSAS	NON-DIRECT SHORT-TERM INVESTMENT OF CENTRAL GOVERNMENT AND BANKING SECTOR :ASIA
NDIGSO	NON-DIRECT SHORT-TERM INVESTMENT OF CENTRAL GOVERNMENT AND BANKING SECTOR :OCEANIA
NDIGSU	NON-DIRECT SHORT-TERM INVESTMENT OF CENTRAL GOVERNMENT AND BANKING SECTOR :INTERNATIONAL ORGANISATIONS
NDIGSU	NON-DIRECT SHORT-TERM INVESTMENT OF CENTRAL GOVERNMENT AND BANKING SECTOR :UNALLOCATED

NAME OF FILE : FORNDI

NDIGST	NON-DIRECT SHORT-TERM INVESTMENT OF CENTRAL GOVERNMENT AND BANKING SECTOR :TOTAL
NDIPCTEC	NON-DIRECT INVESTMENT OF PUBLIC CORPORATIONS AND LOCAL AUTHORITIES :EEC COUNTRIES
NDIPCTE	NON-DIRECT INVESTMENT OF PUBLIC CORPORATIONS AND LOCAL AUTHORITIES :REST OF EUROPE
NDIPCTNS	NON-DIRECT INVESTMENT OF PUBLIC CORPORATIONS AND LOCAL AUTHORITIES :NORTH AND SOUTH AMERICA
NDIPCTAF	NON-DIRECT INVESTMENT OF PUBLIC CORPORATIONS AND LOCAL AUTHORITIES :AFRICA
NDIPCTAS	NON-DIRECT INVESTMENT OF PUBLIC CORPORATIONS AND LOCAL AUTHORITIES :ASIA
NDIPCTO	NON-DIRECT INVESTMENT OF PUBLIC CORPORATIONS AND LOCAL AUTHORITIES :OCEANIA
NDIPCTIO	NON-DIRECT INVESTMENT OF PUBLIC CORPORATIONS AND LOCAL AUTHORITIES :INTERNATIONAL ORGANISATIONS
NDIPCTU	NON-DIRECT INVESTMENT OF PUBLIC CORPORATIONS AND LOCAL AUTHORITIES :UNALLOCATED
NDIPCTT	NON-DIRECT INVESTMENT OF PUBLIC CORPORATIONS AND LOCAL AUTHORITIES :TOTAL
NDIPCLEC	NON-DIRECT LONG-TERM INVESTMENT OF PUBLIC CORPORATIONS AND LOCAL AUTHORITIES : EEC COUNTRIES
NDIPCLE	NON-DIRECT LONG-TERM INVESTMENT OF PUBLIC CORPORATIONS AND LOCAL AUTHORITIES :REST OF EUROPE
NDIPCLNS	NON-DIRECT LONG-TERM INVESTMENT OF PUBLIC CORPORATIONS AND LOCAL AUTHORITIES :NORTH AND SOUTH AMERICA

NAME OF FILE : FORNDI

NDIPCLAF	NON-DIRECT LONG-TERM INVESTMENT OF PUBLIC CORPORATIONS AND LOCAL AUTHORITIES :AFRICA
NDIPCLAS	NON-DIRECT LONG-TERM INVESTMENT OF PUBLIC CORPORATIONS AND LOCAL AUTHORITIES :ASIA
NDIPCLO	NON-DIRECT LONG-TERM INVESTMENT OF PUBLIC CORPORATIONS AND LOCAL AUTHORITIES :OCEANIA
NDIPCLIO	NON-DIRECT LONG-TERM INVESTMENT OF PUBLIC CORPORATIONS AND LOCAL AUTHORITIES : INTERNATIONAL ORGANISATIONS
NDIPCLU	NON-DIRECT LONG-TERM INVESTMENT OF PUBLIC CORPORATIONS AND LOCAL AUTHORITIES :UNALLOCATED
NDIPCLT	NON-DIRECT LONG-TERM INVESTMENT OF PUBLIC CORPORATIONS AND LOCAL AUTHORITIES :TOTAL
NDIPCSEC	NON-DIRECT SHORT-TERM INVESTMENT OF PUBLIC CORPORATIONS AND LOCAL AUTHORITIES : EEC COUNTRIES
NDIPCSE	NON-DIRECT SHORT-TERM INVESTMENT OF PUBLIC CORPORATIONS AND LOCAL AUTHORITIES :REST OF EUROPE
NDIPCSNS	NON-DIRECT SHORT-TERM INVESTMENT OF PUBLIC CORPORATIONS AND LOCAL AUTHORITIES :NORTH AND SOUTH AMERICA
NDIPCSAF	NON-DIRECT SHORT-TERM INVESTMENT OF PUBLIC CORPORATIONS AND LOCAL AUTHORITIES :AFRICA
NDIPCSAS	NON-DIRECT SHORT-TERM INVESTMENT OF PUBLIC CORPORATIONS AND LOCAL AUTHORITIES :ASIA
NDIPCSO	NON-DIRECT SHORT-TERM INVESTMENT OF PUBLIC CORPORATIONS AND LOCAL AUTHORITIES :OCEANIA
NDIPCSIO	NON-DIRECT SHORT-TERM INVESTMENT OF PUBLIC CORPORATIONS AND LOCAL AUTHORITIES : INTERNATIONAL ORGANISATIONS

NAME OF FILE : FORNDI

NDIPCSU	NON-DIRECT SHORT-TERM INVESTMENT OF PUBLIC CORPORATIONS AND LOCAL AUTHORITIES :UNALLOCATED
NDIPCST	NON-DIRECT SHORT-TERM INVESTMENT OF PUBLIC CORPORATIONS AND LOCAL AUTHORITIES :TOTAL
NDIPEC	NON-DIRECT INVESTMENT OF PRIVATE SECTOR :EEC COUNTRIES
NDIPE	NON-DIRECT INVESTMENT OF PRIVATE SECTOR :REST OF EUROPE
NDIPNS	NON-DIRECT INVESTMENT OF PRIVATE SECTOR :NORTH AND SOUTH AMERICA
NDIPAF	NON-DIRECT INVESTMENT OF PRIVATE SECTOR :AFRICA
NDIPAS	NON-DIRECT INVESTMENT OF PRIVATE SECTOR :ASIA
NDIPO	NON-DIRECT INVESTMENT OF PRIVATE SECTOR :OCEANIA
NDIPIO	NON-DIRECT INVESTMENT OF PRIVATE SECTOR :INTERNATIONAL ORGANISATIONS
NDIPU	NON-DIRECT INVESTMENT OF PRIVATE SECTOR :UNALLOCATED
NDIPT	NON-DIRECT INVESTMENT OF PRIVATE SECTOR :TOTAL
NDIPLEC	NON-DIRECT LONG-TERM INVESTMENT OF PRIVATE SECTOR :EEC COUNTRIES
NDIPLE	NON-DIRECT LONG-TERM INVESTMENT OF PRIVATE SECTOR :REST OF EUROPE

.NAME OF FILE : FORNDI

NDIPLNS	NON-DIRECT LONG-TERM INVESTMENT OF PRIVATE SECTOR :NORTH AND SOUTH AMERICA
NDIPLAF	NON-DIRECT LONG-TERM INVESTMENT OF PRIVATE SECTOR :AFRICA
NDIPLAS	NON-DIRECT LONG-TERM INVESTMENT OF PRIVATE SECTOR :ASIA
NDIPLD	NON-DIRECT LONG-TERM INVESTMENT OF PRIVATE SECTOR :OCEANIA
NDIPLIO	NON-DIRECT LONG-TERM INVESTMENT OF PRIVATE SECTOR :INTERNATIONAL ORGANISATIONS
NDIPLU	NON-DIRECT LONG-TERM INVESTMENT OF PRIVATE SECTOR :UNALLOCATED
NDIPLT	NON-DIRECT LONG-TERM INVESTMENT OF PRIVATE SECTOR :TOTAL
NDIPOLEC	NON-DIRECT INVESTMENT IN ORDINARY AND OTHER SHARES BY PRIVATE SECTOR :EEC COUNTRIES
NDIPOLE	NON-DIRECT INVESTMENT IN ORDINARY AND OTHER SHARES BY PRIVATE SECTOR :REST OF EUROPE
NDIPOLNS	NON-DIRECT INVESTMENT IN ORDINARY AND OTHER SHARES BY PRIVATE SECTOR :NORTH AND SOUTH AMERICA
NDIPOLAF	NON-DIRECT INVESTMENT IN ORDINARY AND OTHER SHARES BY PRIVATE SECTOR :AFRICA
NDIPOLAS	NON-DIRECT INVESTMENT IN ORDINARY AND OTHER SHARES BY PRIVATE SECTOR :ASIA
NDIPOLO	NON-DIRECT INVESTMENT IN ORDINARY AND OTHER SHARES BY PRIVATE SECTOR :OCEANIA

NAME OF FILE : FORNDI

NDIPOLIO	NON-DIRECT INVESTMENT IN ORDINARY AND OTHER SHARES BY PRIVATE SECTOR :INTERNATIONAL ORGANISATIONS
NDIPOLU	NON-DIRECT INVESTMENT IN ORDINARY AND OTHER SHARES BY PRIVATE SECTOR :UNALLOCATED
NDIPOLT	NON-DIRECT INVESTMENT IN ORDINARY AND OTHER SHARES BY PRIVATE SECTOR :TOTAL
NDIPSLEC	NON-DIRECT INVESTMENT IN SHARE PREMIUM AND UNDISTRIBUTED PROFIT BY PRIVATE SECTOR : EEC COUNTRIES
NDIPSLE	NON-DIRECT INVESTMENT IN SHARE PREMIUM ,RESERVES AND UNDISTRIBUTED PROFIT BY PRIVATE SECTOR :REST OF EUROPE
NDIPSLNS	NON-DIRECT INVESTMENT IN SHARE PREMIUM ,RESERVES AND UNDISTRIBUTED PROFIT BY PRIVATE SECTOR :NORTH AND SOUTH AMERICA
NDIPSLAF	NON-DIRECT INVESTMENT IN SHARE PREMIUM ,RESERVES AND UNDISTRIBUTED PROFIT BY PRIVATE SECTOR :AFRICA
NDIPSLAS	NON-DIRECT INVESTMENT IN SHARE PREMIUM ,RESERVES AND UNDISTRIBUTED PROFIT BY PRIVATE SECTOR :ASIA
NDIPSLO	NON-DIRECT INVESTMENT IN SHARE PREMIUM ,RESERVES AND UNDISTRIBUTED PROFIT BY PRIVATE SECTOR :OCEANIA
NDIPSLIO	NON-DIRECT INVESTMENT IN SHARE PREMIUM ,RESERVES AND UNDISTRIBUTED PROFIT BY PRIVATE SECTOR :INTERNATIONAL ORGANISATIONS
NDIPSLU	NON-DIRECT INVESTMENT IN SHARE PREMIUM ,RESERVES AND UNDISTRIBUTED PROFIT BY PRIVATE SECTOR :UNALLOCATED
NDIPSLT	NON-DIRECT INVESTMENT IN SHARE PREMIUM ,RESERVES AND UNDISTRIBUTED PROFIT BY PRIVATE SECTOR :TOTAL
NDIPDLEC	NON-DIRECT INVESTMENT IN DEBENTURES LOAN STOCK AND SIMILAR SECURITIES BY PRIVATE SECTOR : EEC COUNTRIES

NAME OF FILE : PCRNDI

NDIPDLE	NON-DIRECT INVESTMENT IN DEBENTURES LOAN STOCK AND SIMILAR SECURITIES BY PRIVATE SECTOR : REST OF EUROPE
NDIPDLNS	NON-DIRECT INVESTMENT IN DEBENTURES LOAN STOCK AND SIMILAR SECURITIES BY PRIVATE SECTOR : NORTH AND SOUTH AMERICA
NDIPDLAF	NON-DIRECT INVESTMENT IN DEBENTURES LOAN STOCK AND SIMILAR SECURITIES BY PRIVATE SECTOR : AFRICA
NDIPDLAS	NON-DIRECT INVESTMENT IN DEBENTURES LOAN STOCK AND SIMILAR SECURITIES BY PRIVATE SECTOR : ASIA
NDIPDLO	NON-DIRECT INVESTMENT IN DEBENTURES LOAN STOCK AND SIMILAR SECURITIES BY PRIVATE SECTOR : OCEANIA
NDIPDLIO	NON-DIRECT INVESTMENT IN DEBENTURES LOAN STOCK AND SIMILAR SECURITIES BY PRIVATE SECTOR : INTERNATIONAL ORGANISATIONS
NDIPDLU	NON-DIRECT INVESTMENT IN DEBENTURES LOAN STOCK AND SIMILAR SECURITIES BY PRIVATE SECTOR : UNALLOCATED
NDIPDLT	NON-DIRECT INVESTMENT IN DEBENTURES LOAN STOCK AND SIMILAR SECURITIES BY PRIVATE SECTOR : TOTAL
NDIPMLEC	NON-DIRECT INVESTMENT IN MORTGAGES AND LONG-TERM LOANS BY PRIVATE SECTOR :EEC COUNTRIES
NDIPMLE	NON-DIRECT INVESTMENT IN MORTGAGES AND LONG-TERM LOANS BY PRIVATE SECTOR :REST OF EUROPE
NDIPMLNS	NON-DIRECT INVESTMENT IN MORTGAGES AND LONG-TERM LOANS BY PRIVATE SECTOR :NORTH AND SOUTH AMERICA
NDIPMLAF	NON-DIRECT INVESTMENT IN MORTGAGES AND LONG-TERM LOANS BY PRIVATE SECTOR :AFRICA
NDIPMLAS	NON-DIRECT INVESTMENT IN MORTGAGES AND LONG-TERM LOANS BY PRIVATE SECTOR :ASIA

NAME OF FILE : FORNDI

NDIPMLO	NON-DIRECT INVESTMENT IN MORTGAGES AND LONG-TERM LOANS BY PRIVATE SECTOR :OCEANIA
NDIPMLIO	NON-DIRECT INVESTMENT IN MORTGAGES AND LONG-TERM LOANS BY PRIVATE SECTOR :INTERNATIONAL ORGANISATIONS
NDIPMLU	NON-DIRECT INVESTMENT IN MORTGAGES AND LONG-TERM LOANS BY PRIVATE SECTOR :UNALLOCATED
NDIPMLT	NON-DIRECT INVESTMENT IN MORTGAGES AND LONG-TERM LOANS BY PRIVATE SECTOR :TOTAL
NDIPALEC	OTHER NON-DIRECT INVESTMENT OF PRIVATE SECTOR :EEC COUNTRIES
NDIPALE	OTHER NON-DIRECT INVESTMENT OF PRIVATE SECTOR :REST OF EUROPE
NDIPALNS	OTHER NON-DIRECT INVESTMENT OF PRIVATE SECTOR :NORTH AND SOUTH AMERICA
NDIPALAF	OTHER NON-DIRECT INVESTMENT OF PRIVATE SECTOR :AFRICA
NDIPALAS	OTHER NON-DIRECT INVESTMENT OF PRIVATE SECTOR :ASIA
NDIPALO	OTHER NON-DIRECT INVESTMENT OF PRIVATE SECTOR :OCEANIA
NDIPALIO	OTHER NON-DIRECT INVESTMENT OF PRIVATE SECTOR :INTERNATIONAL ORGANISATIONS
NDIPALU	OTHER NON-DIRECT INVESTMENT OF PRIVATE SECTOR :UNALLOCATED
NDIPALT	OTHER NON-DIRECT INVESTMENT OF PRIVATE SECTOR :TOTAL

NAME OF FILE : FORNDI

NDIPSEC	NON-DIRECT SHORT-TERM INVESTMENT OF PRIVATE SECTOR :EEC COUNTRIES
NDIPSE	NON-DIRECT SHORT-TERM INVESTMENT OF PRIVATE SECTOR :REST OF EUROPE
NDIPSNS	NON-DIRECT SHORT-TERM INVESTMENT OF PRIVATE SECTOR :NORTH AND SOUTH AMERICA
NDIPSAF	NON-DIRECT SHORT-TERM INVESTMENT OF PRIVATE SECTOR :AFRICA
NDIPSAS	NON-DIRECT SHORT-TERM INVESTMENT OF PRIVATE SECTOR :ASIA
NDIPSO	NON-DIRECT SHORT-TERM INVESTMENT OF PRIVATE SECTOR :OCEANIA
NDIPSIO	NON-DIRECT SHORT-TERM INVESTMENT OF PRIVATE SECTOR :INTERNATIONAL ORGANISATIONS
NDIPSU	NON-DIRECT SHORT-TERM INVESTMENT OF PRIVATE SECTOR :UNALLOCATED
NDIPST	NON-DIRECT SHORT-TERM INVESTMENT OF PRIVATE SECTOR :TOTAL
NDITEC	TOTAL NON-DIRECT INVESTMENT : EEC COUNTRIES
NDITE	TOTAL NON-DIRECT INVESTMENT : REST OF EUROPE
NDITNS	TOTAL NON-DIRECT INVESTMENT : NORTH AND SOUTH AMERICA
NDITAF	TOTAL NON-DIRECT INVESTMENT :AFRICA

NAME OF FILE : FORNDI

NDITAS	TOTAL NON-DIRECT INVESTMENT :ASIA
NDITO	TOTAL NON-DIRECT INVESTMENT : OCEANIA
NDITIO	TOTAL NON-DIRECT INVESTMENT : INTERNATIONAL ORGANISATIONS
NDITU	TOTAL NON-DIRECT INVESTMENT : UNALLOCATED
NDITT	TOTAL NON-DIRECT INVESTMENT :TOTAL

Source

"A Statistical Presentation of South Africa's Liabilities and Assets, 1956 to 1981", Supplement to South African Reserve Bank Bulletin, June 1983.

SOUTH AFRICAN INVESTMENT ABROAD

The files containing these data are :

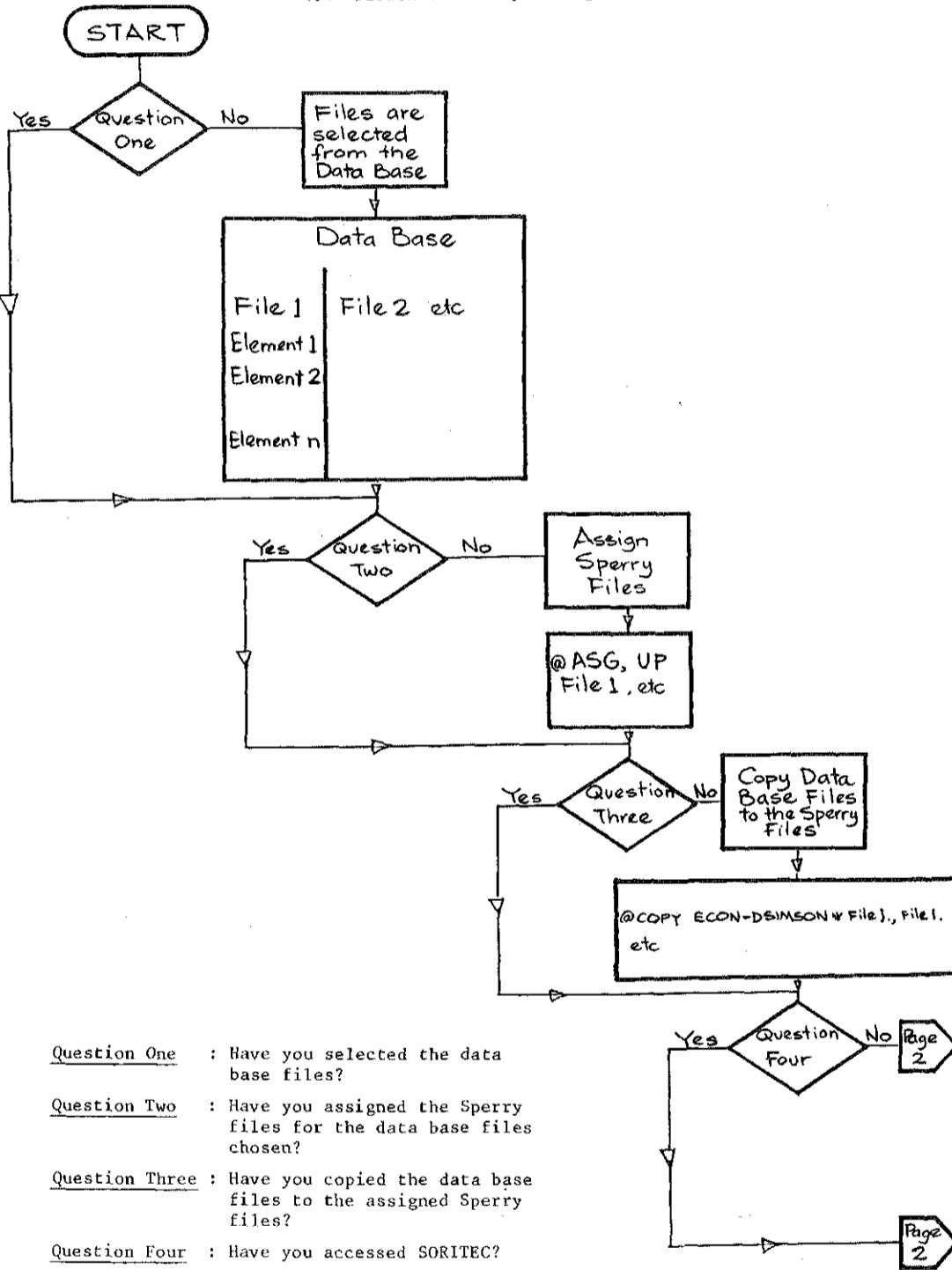
FORTASS Total South African Investment Abroad
FORDASS Direct South African Investment Abroad
FORIASS Indirect South African Investment Abroad.

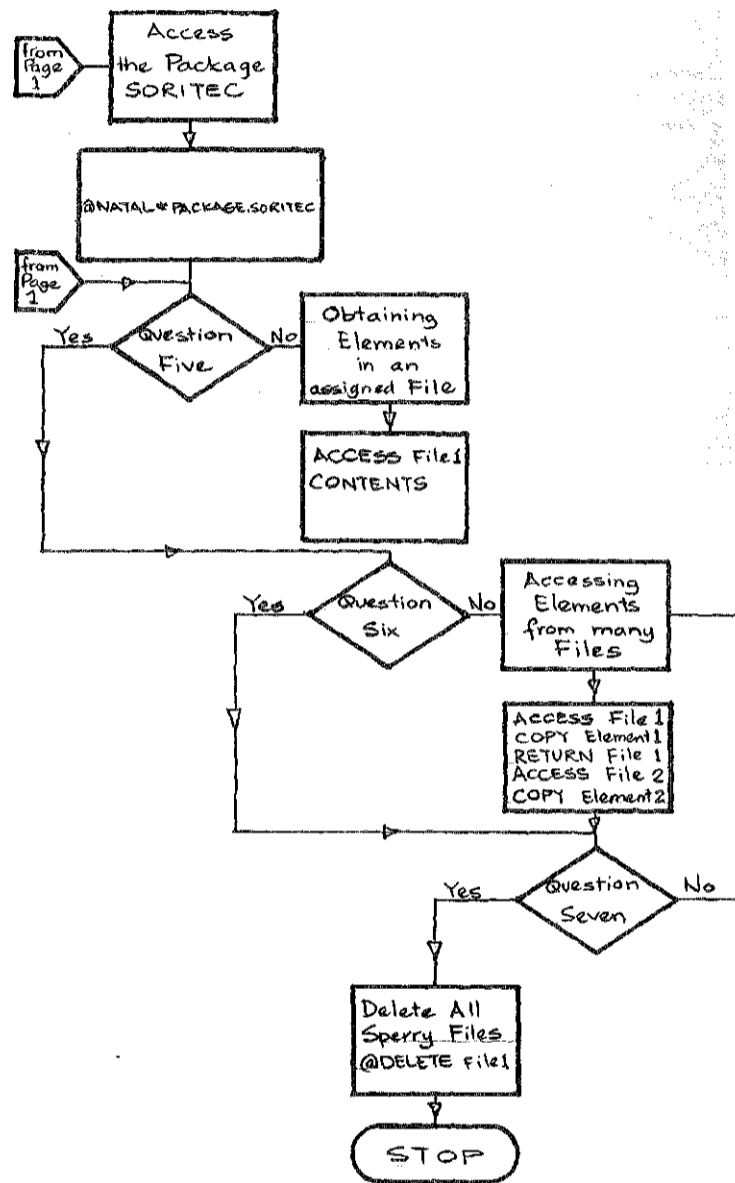
Warning: These files use respectively the same element names as the foreign liability files FORTOTI, FORDI and FORNDI.

If common elements in a foreign asset, and its corresponding foreign liability file are to be used concurrently, then the elements of the file which is accessed first must be renamed. Renaming is achieved by using simple equation commands. The example which follows illustrates the renaming procedure.

```
*****  
*  
*           Example           *  
*  
*ACCESS FORTOTI *  
*COPY TIGLAS TIGLO TIGLIO *  
*A=TIGLAS *  
*B=TIGLO *  
*C=TIGLIO *  
*RETURN FORTOTI *  
*ACCESS FORTASS *  
*COPY TIGLAS TIGLO TIGLIO *  
*  
*****
```

4.4 Flowchart for Operating the Data Base





Question Five : Have you obtained the elements you need?

Question Six : Do you need elements from all the files you assigned?

Question Seven : Do you need more elements or have you completed your task?

5 BIBLIOGRAPHY

- Kuttner, R "The Poverty of Economics", The Atlantic Monthly, February 1985, pp 74-84.
- Leamer, E E "Let's Take the Con Out of Econometrics", The American Economic Review, Vol 73, March 1983, pp 31-43.
- Leontief, W "Theoretical Assumptions and Nonobserved Facts", The American Economic Review, Vol LXI, March 1971, pp 3-7.
- Morgenstern, O On the Accuracy of Economic Observations, Princeton, New Jersey, Princeton University Press, 2nd Edition, 1970.
- Pindyck, R and Econometric Models and Economic Forecasts, Rubinfeld, D New York, McGraw-Hill, Inc, 1976.
- The Sorites Group SORITEC Reference Manual, Version 1.05 Inc Springfield, Virginia, 1982.

This work is licensed under a
Creative Commons
Attribution – NonCommercial - NoDerivs 3.0 Licence.

To view a copy of the licence please see:
<http://creativecommons.org/licenses/by-nc-nd/3.0/>