

## ASIA REGIONS

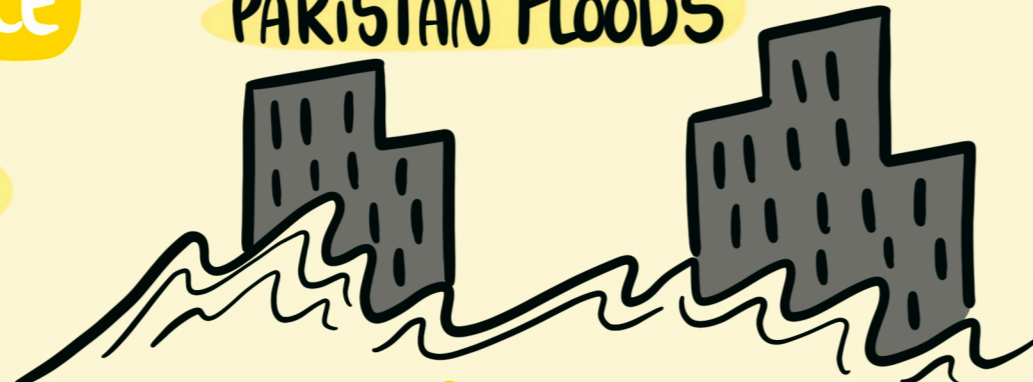
INTERDEPENDENT CRISIS



AFFECTING RESILIENCE

COVID  
CLIMATE CHANGE  
CONFLICTS

MILLIONS OF PEOPLE STILL DISPLACED FROM PAKISTAN FLOODS



IT WILL AGGRAVATE FURTHER

TYPHOONS

ENERGY CRISIS

INSECURITY BREEDS INSECURITY

COLLECTIVE RESPONSE NEEDED



CLIMBING INFLATION



POLICIES NEED TO BE CLIMATE-SMART

MORE WOMEN IN CHARGE OF POLICIES!

POLICIES NEED PROPER DESIGN & IMPLEMENTATION

CONTEXT IS KEY

WOMEN ACCESS TO WORK

LEGISLATION

SOCIAL-CULTURAL BARRIERS

INFRASTRUCTURE

## SUB-SAHARAN AFRICA REGIONS

KEY DRIVERS OF POVERTY

CLIMATE CHANGE

INFLATION

POPULATION DYNAMICS

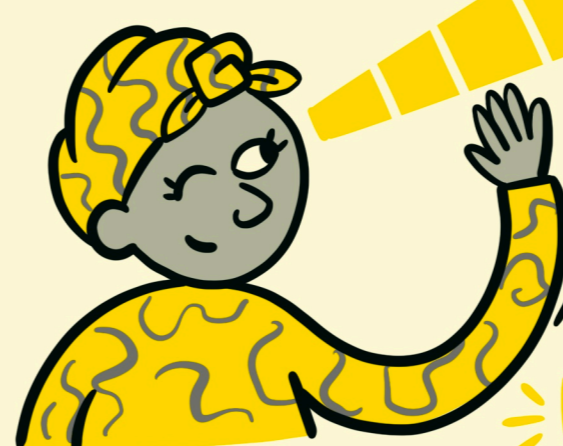
CONFLICTS



THESE CRISIS AREN'T NEW!

IMPACT ON LIVELIHOODS & HUMAN CAPITAL DEVELOPMENT

DISCUSS JOBS WITH A GENDER LENS



EDUCATION

INTERVENTIONS MUST INTENTIONALLY ENGAGE BOTH MEN & WOMEN



MUST BE GENDER-RESPONSIVE

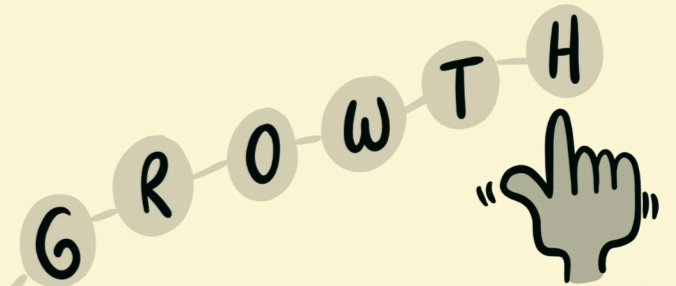
COVID-19 IS JUST ONE PART OF THE STORY

IMPROVE



GOVERNANCE & ACCOUNTABILITY

PROMOTE ECONOMIC



RESILIENCE IN AGRICULTURE IS KEY

INTER-GENERATIONAL DISCUSSIONS



FOSTER SPACES FOR SOCIAL DIALOGUES

DEVELOP KNOWLEDGE IN CALL FOR ACTION

INFORMATION IS POWER

MOBILISE YOUNG PEOPLE

TAKE INFORMATION BACK TO COMMUNITIES