

The Constant Quest for Solutions through Dialogue and Consensus in Rwanda: The Mechanisms for Dialogue and Consensus

Introduction

Rwanda has deliberately set out to build social cohesion, a prerequisite for a society to survive and progress and an essential strategy for reducing the risk of future cataclysmic breakdown. It is strongest when a majority of members of society consider themselves to be stakeholders. Beyond enabling people to work together and live in peace and harmony, it provides an essential basis for economic development and the context in which individuals can convert their capabilities into functioning

Rwanda has embraced pluralistic politics defined by dialogue and consensus approach in order to tackle different issues of national and local interest. This commitment is clearly set out in article 9 of the Constitution which commits the government of Rwanda to promote and reinforce a number of fundamental principles among which the principle of “constant quest of solutions through dialogue and consensus”. The importance attached to the principle of dialogue and consensus is materialized by the number of policies and mechanisms in place to promote and sustain it.

Aim of the study

Aims and Objectives of the Research

The core objective of this research project is to:

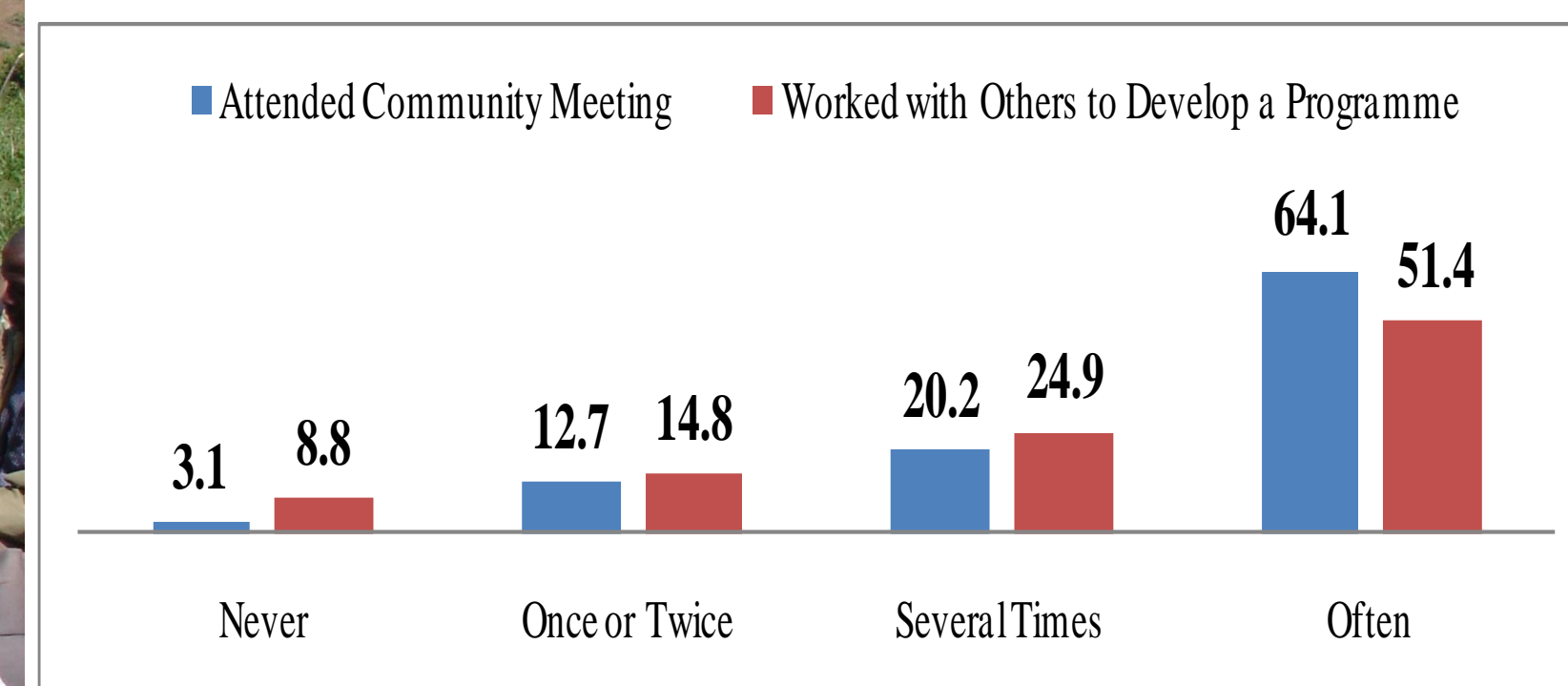
- explore how Rwandan citizens understand the principle of Dialogue and Consensus
- to evaluate how well policies designed to promote Dialogue and Consensus are working in practice: that is the extent to which they are contributing to the intended *outcomes*, in particular the their impact on social cohesion.

The aim of the study was to find out how Rwandans understand the principle of Dialogue and Consensus, and whether tools put in place to promote and create enabling environment for Dialogue and Consensus frameworks are achieving their objectives. The study on the dialogue and consensus focused on mechanisms such as *Gacaca*, *abunzi*, *umuganda*, community development committees, national women council, national youth council, *itorero*, *girinka*, *ubudehe*, community juries, and advisory councils. In addition the study captured views on the trust in various institutions at national and local level as well as trust in family members and friends.



Findings

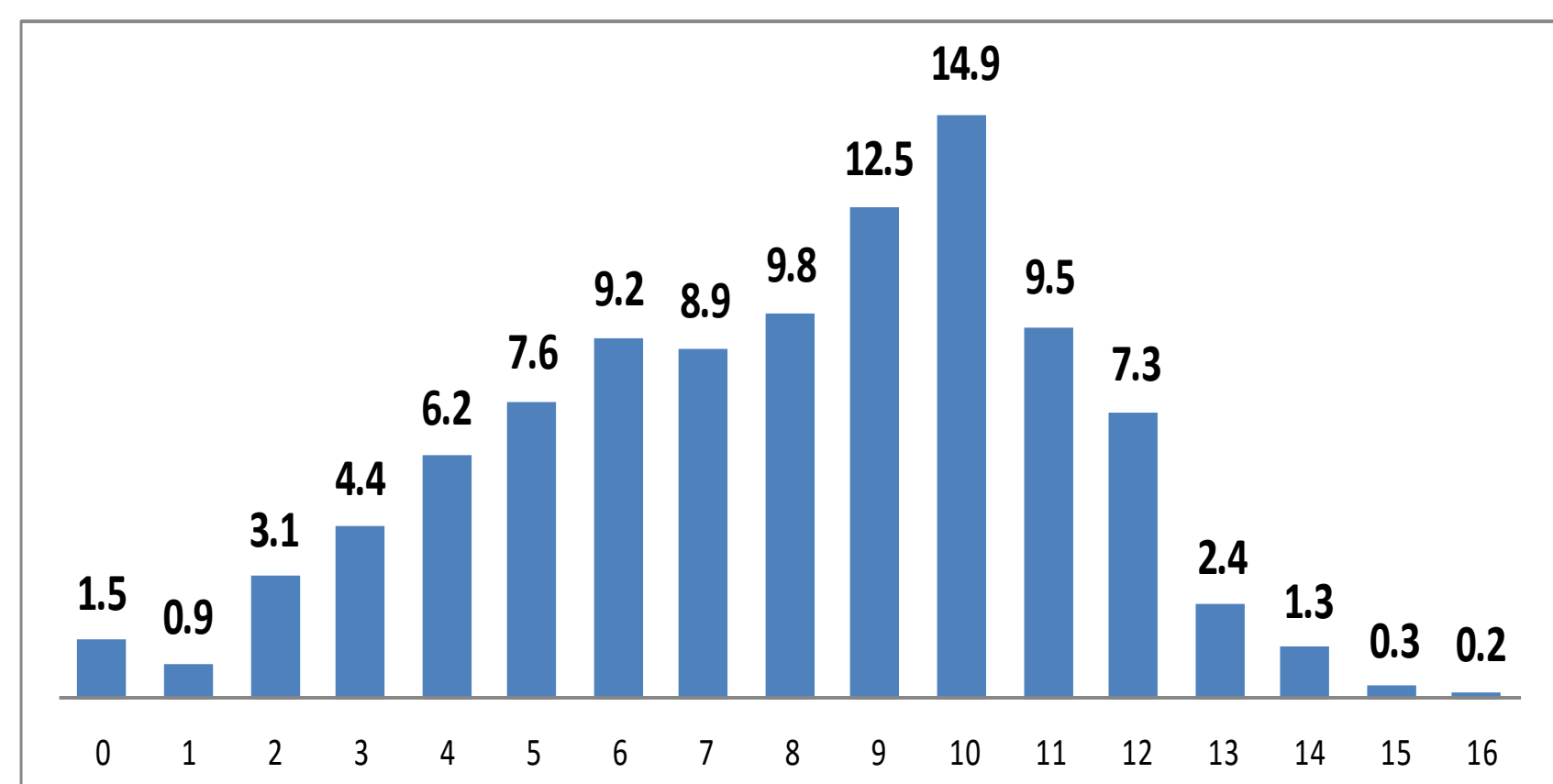
Engagement with the Community in the 12 Months Prior to the Survey



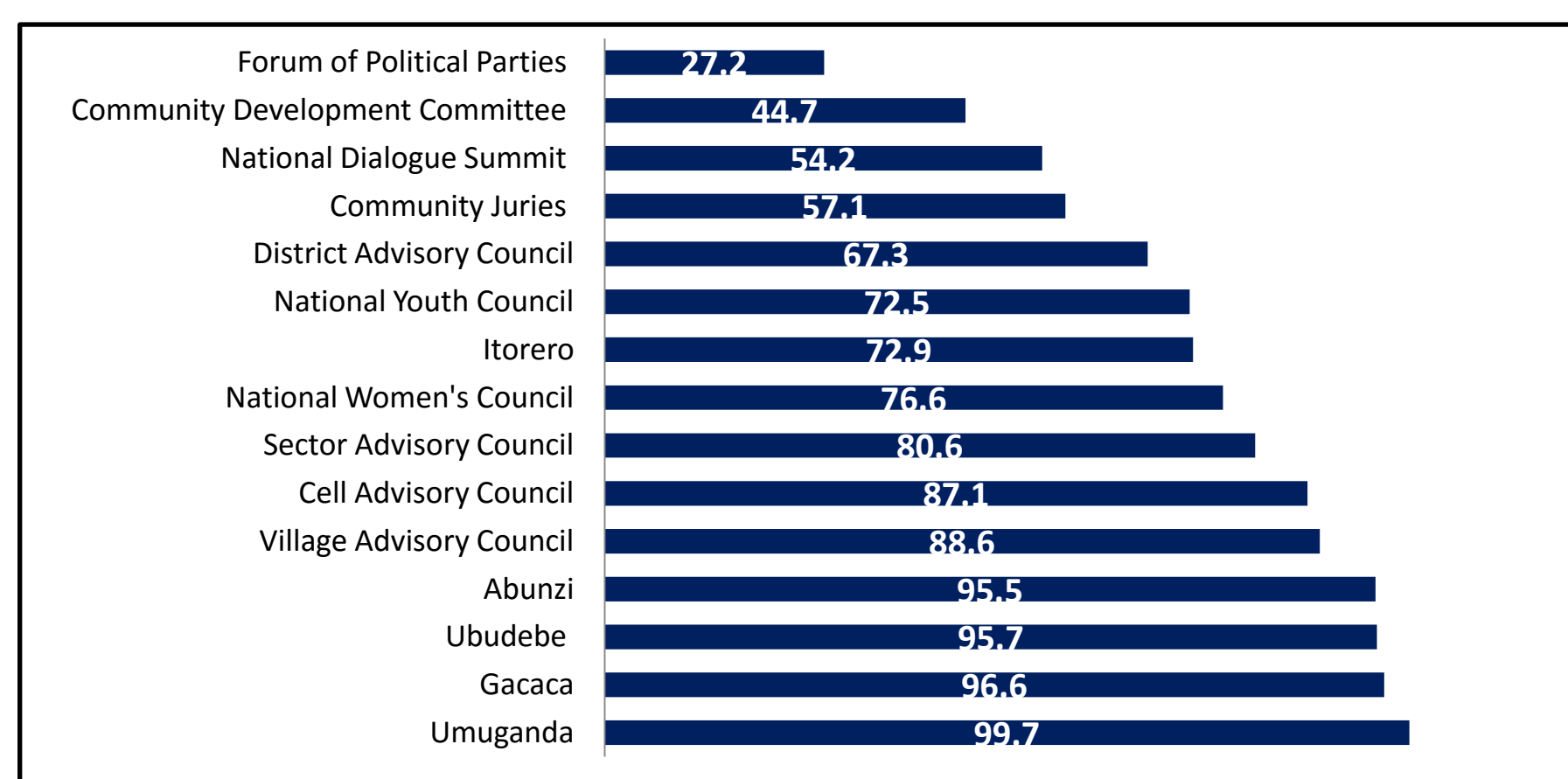
Proportion of Respondents that have Frequently Engaged with Mechanisms by Various Characteristics

	Umuganda	Gacaca	Abunzi (used)	Village Advisory Council	National Women's Council ¹	National Youth Council ²	Community Juries	National Dialogue Summit
C of K	80.8	38.4	12.7	32.0	11.5	7.9	5.3	67.0
Southern	73.8	39.5	21.4	34.4	20.2	14.2	18.6	43.9
Western	69.7	44.4	24.0	30.6	26.6	17.8	10.4	24.6
Northern	70.8	44.8	22.0	50.0	37.0	28.7	6.8	46.2
Eastern	68.1	30.4	25.5	52.1	32.6	25.1	12.3	51.3
Urban	74.8	40.7	12.8	28.6	9.5	6.7	5.7	61.4
Semi-urban	77.3	34.2	21.2	49.3	31.1	21.1	11.8	50.7
Rural	71.1	39.6	23.5	40.6	28.5	21.0	12.7	41.1
Male	78.2	34.1	23.9	44.6	0	25.5	14.3	53.0
Female	66.3	44.4	19.6	34.4	32.9	10.7	8.7	37.4
No Education	57.2	41.2	21.3	37.2	23.5	14.7	9.4	32.0
Incomplete Primary	73.3	40.1	23.2	41.5	24.0	20.5	11.1	40.9
Completed Primary	82.4	35.0	21.2	43.3	29.9	17.8	14.9	48.5
Incomplete Secondary	73.4	43.1	23.4	34.4	22.9	14.6	8.9	56.6
Senior Secondary Higher	77.5	41.8	16.7	29.4	23.7	18.8	10.3	78.6
18-25 Years	69.1	55.7	15.5	23.4	15.3	33.2	5.6	48.2
26-35 Years	86.7	47.0	20.0	43.4	26.1	27.7	12.5	47.9
36-50 Years	81.4	33.2	23.3	43.2	33.3	-----	13.0	44.7
51 Years and Over	45.3	28.1	25.3	40.0	20.1	-----	12.0	41.1
Q1	60.6	43.6	24.7	33.6	22.3	26.0	11.9	29.8
Q2	72.3	37.6	23.3	42.2	24.7	27.1	10.6	37.9
Q3	74.9	41.4	19.8	39.5	25.3	31.3	12.4	45.9
Q4	75.6	38.1	21.8	43.0	26.8	30.8	9.5	54.9
Q5	78.5	35.9	19.3	40.2	26.8	31.1	13.1	57.6
Total	72.3	39.2		39.5	25.3	18.0	11.5	45.2

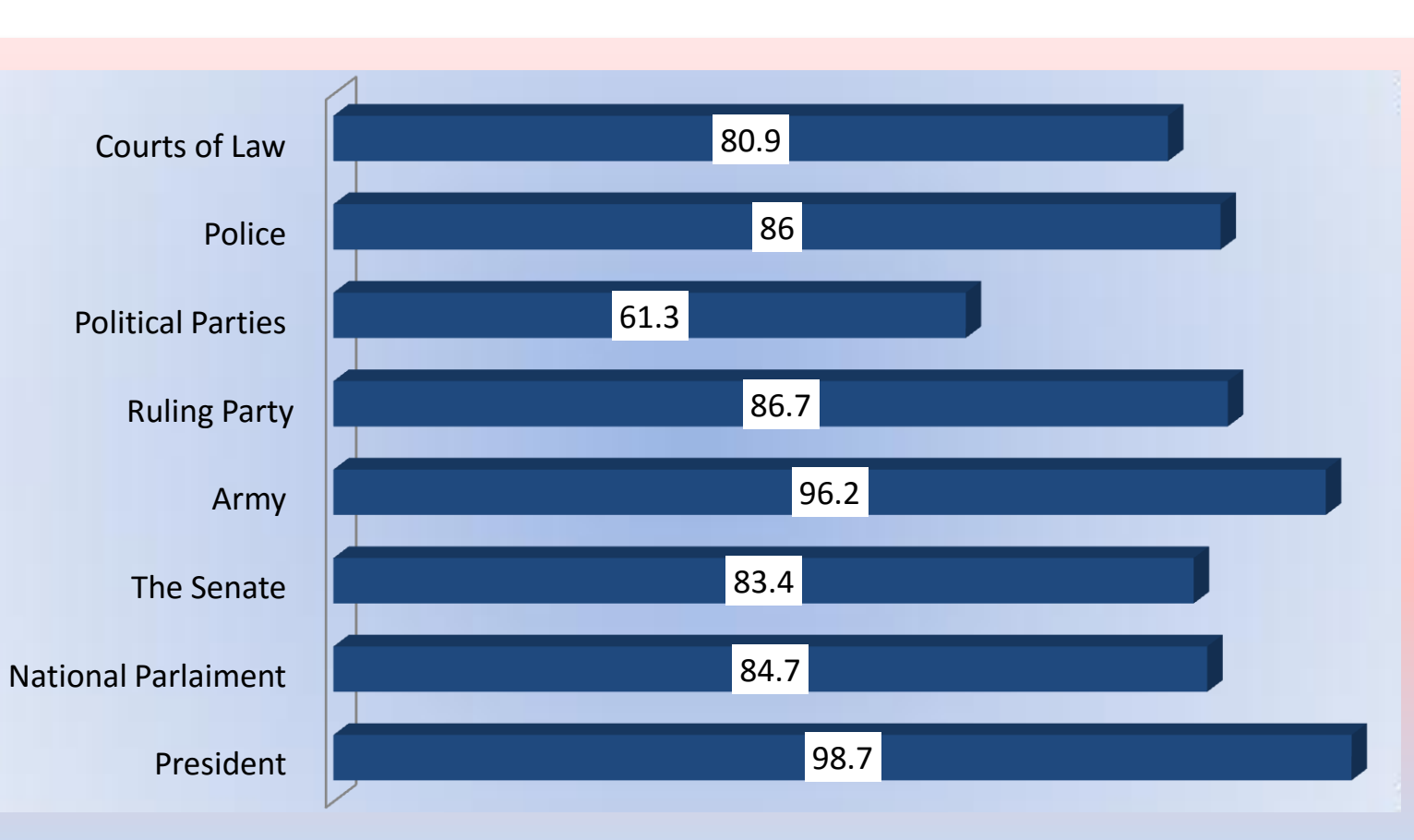
Index of Density of Engagement with the Mechanisms for Dialogue and Consensus



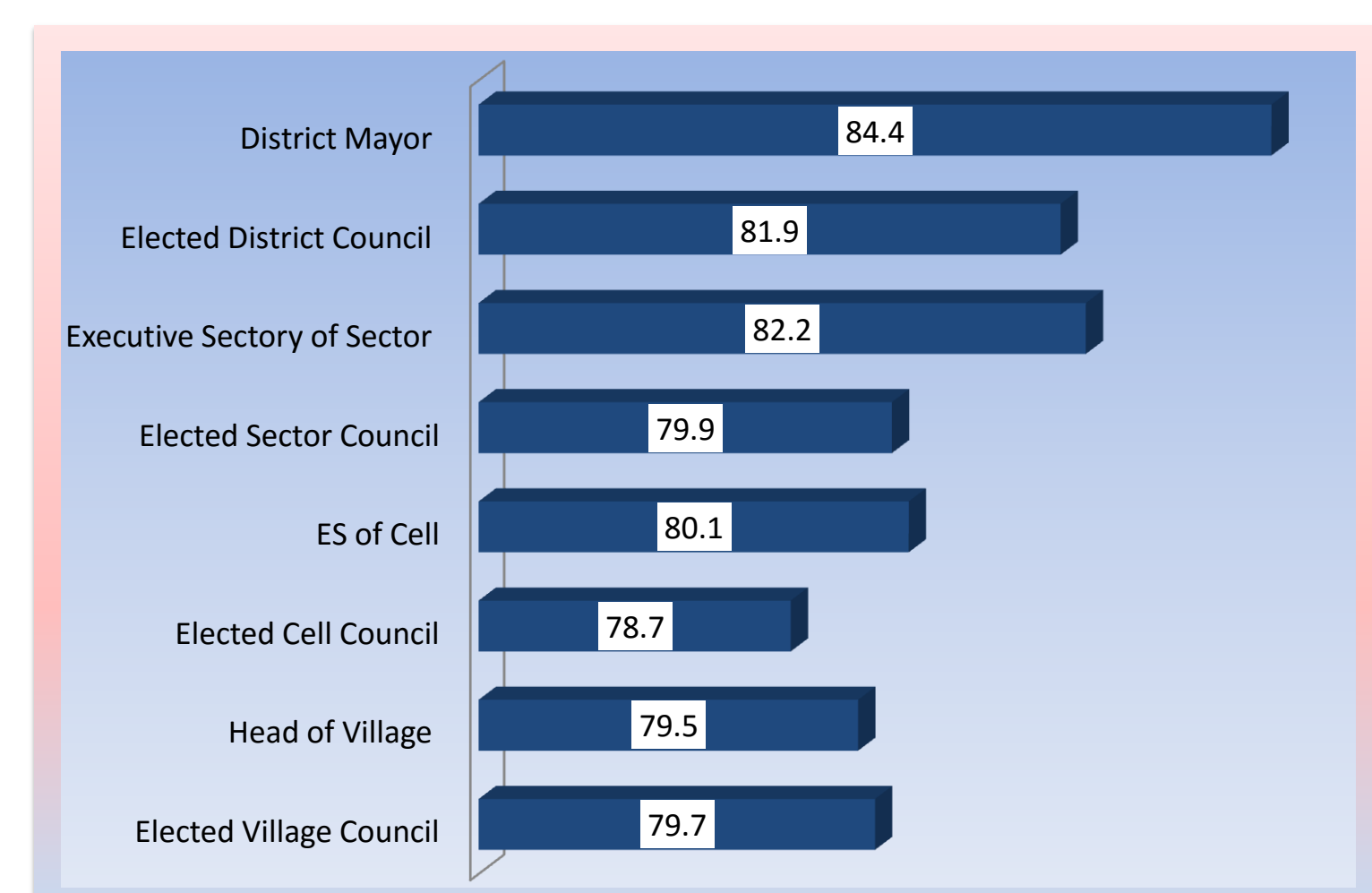
% of Respondents Heard of the Mechanisms for Dialogue and Consensus.



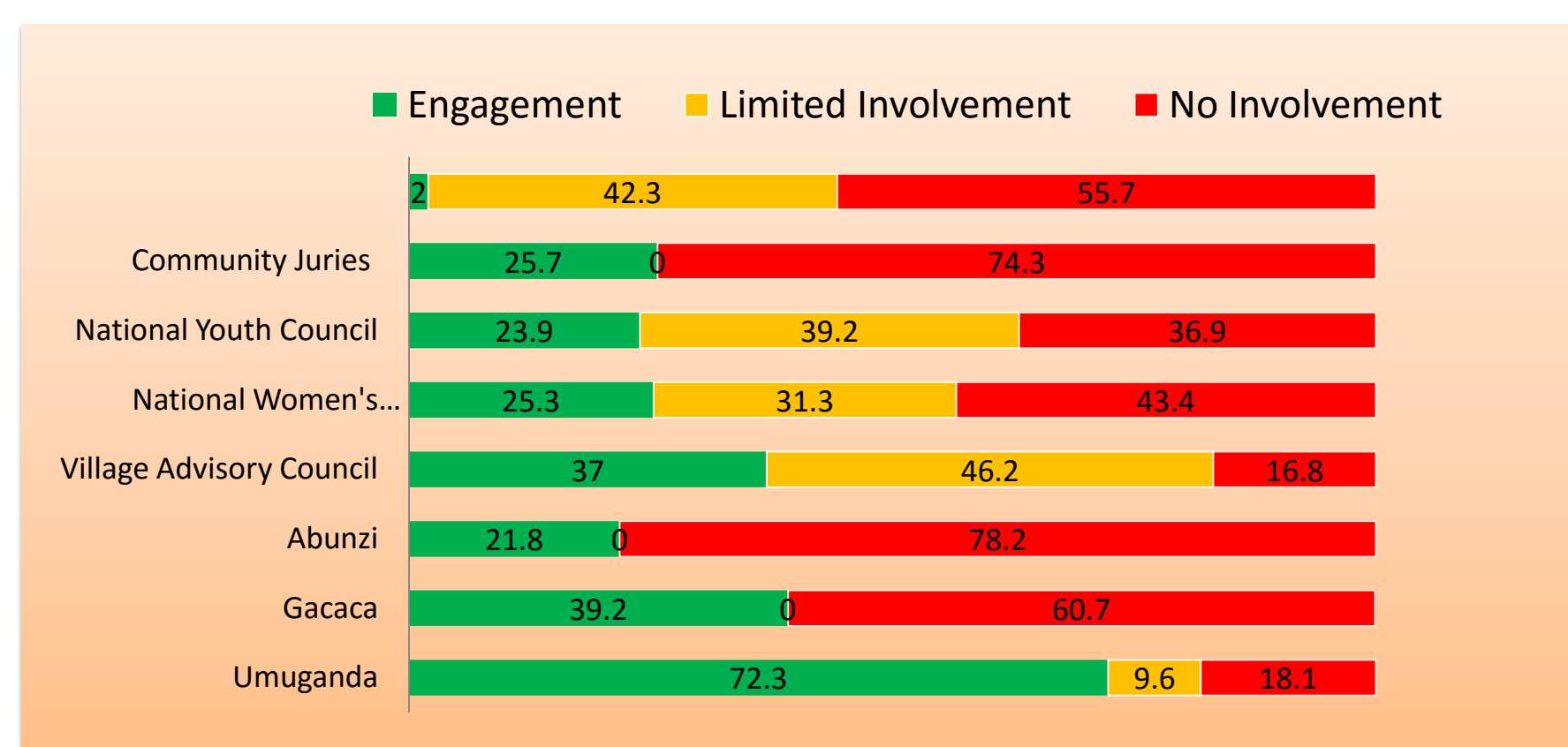
High Trust in National Political Institutions



High Trust in Local Politicians



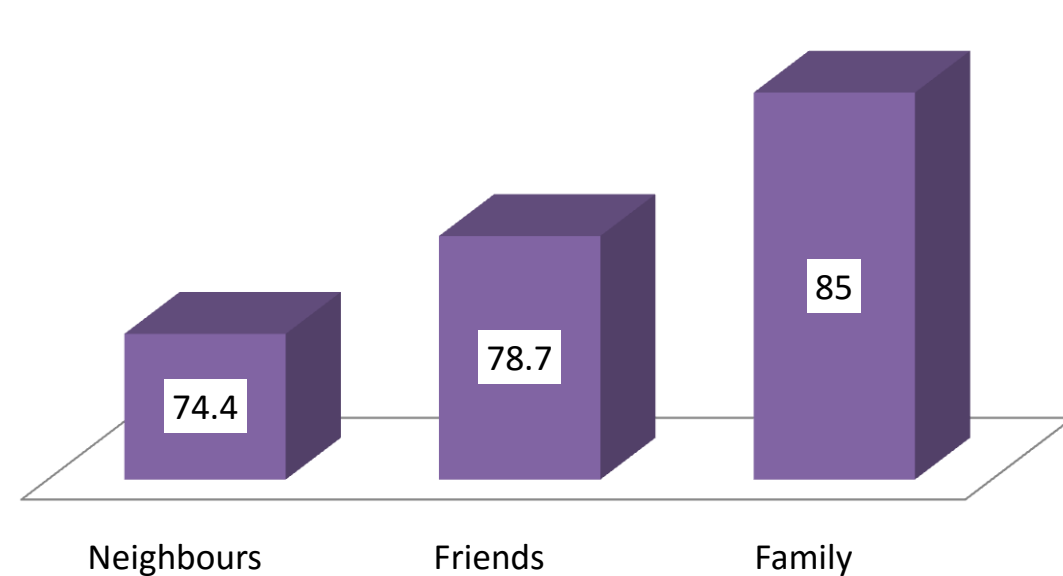
% of Respondents Engagement with Mechanisms for Dialogue and Consensus



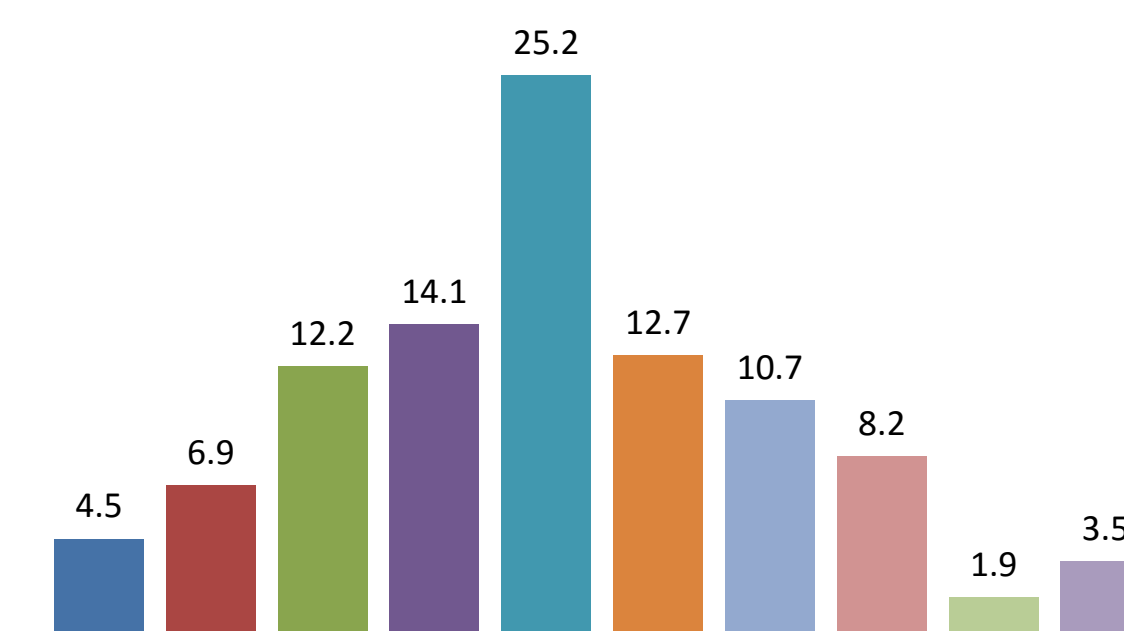
Proportion of Respondents that Have Heard of Mechanisms by Various Characteristics

	Umuganda	Gacaca	Abunzi	Ubudehe	VAC	CAC	SAC	DAC	NWC	NYC	Community Juries	CDC	Itorero	NDS	FPF
C of K	99.7	95.3	84.3	88.0	79.8	79	74.8	66.7	74.8	72.8	42.3	40.3	85.3	70.8	42.7
Southern	99.7	99.2	97.3	97.4	94.3	92.1	82.6	63.7	80.8	73.8	70.9	30.3	76.6	54.9	24.5
Western	99.8	97.0	96.7	97.3	79.5	80.9	76.7	67.6	72.5	69.8	50.5	30.9	61.2	34.4	17.8
Northern	99.5	91.2	95.2	97.3	93.2	90.0	84.5	68.2	69.9	65.7	61.0	51.2	68.8	48.5	24.8
Eastern	99.6	98.2	96.1	96.1	94.3	90.7	83.3	70.7	82.3	78.6	55.4	80.4	74.0	65.4	30.1
Urban	99.5	94.6	82.6	87.0	76.1	74.5	69.5	63.8	70.8	70.9	37.7	35.7	80.4	66.2	39.8
Semi-urban	99.7	97.0	97.0	94.8	95.1	91.5	85.5	68.8	83.0	76.7	62.7	51.5	79.5	61.4	33.2
Rural	99.7	97.0	96.8	97.5	89.2	82.3	67.8	77.2	72.3	60.5	45.7	70.3	50.7	23.7	
Male	99.5	97.8	96.0	96.5	92.3	91.1	85.5	73.0	75.9	79.5	62.2	48.4	81.5	63.2	37.1
Female	99.8	95.5	93.0	94.7	84.9	82.9	75.6	61.5	77.5	65.5	51.8	41.0	64.1	45.2	17.2
No Education	99.5	95.4	93.5	95.8	87.6	84.6	77.2	63.4	71.4	67.1	56.5	43.2	61.9	42.6	14.4
Incomplete Primary	99.8	96.8	95.5	96.6	88.7	86.5	78.9	65.0	73.6	68.4	57.0	44.7	67.5	48.8	20.1
Completed Primary	99.6	97.8	96.4	96.8	92.7	91.7	85.5	70.1	80.9	76.1	62.2	46.1	79.2	58.4	31.9
Incomplete Secondary	99.7	94.9	90.8	90.8	82.7	82.1	77.8	67.5	80.5	79.4	49.6	41.2	82.7	66.7	39.0
Senior Secondary Higher	100	97.7	92	92.4	86.2	86.3	83.2	79.4	87.4	85.5	48.1	48.1	93.9	84.4	66.4
Q1	99.5	96.4	93.2	94.8	84.3	80.7	72.5	59.1	67.0	61.5	52.1	40.1	58.7	38.7	15.8
Q2	99.5	96.3	95.4	97.2	90.0	87.7	79.5	63.8	74.0	68.9	53.8	40.8	66.0	46.2	20.3
Q3	99.9	97.0	95.8	95.7	89.7	88.9	81.7	65.1	78.0	73.2	59.7	47.0	74.9	54.6	25.5
Q4	99.9	97.3	94.7	95.9	89.4	89.4	84.0	72.1	80.2	77.4	61.6	44.8	80.4	63.2	31.9
Q5	99.6	97.2	94.4	94.9	89.9	88.7	85.4	78.6	84.2	81.0	59.6	49.9	83.2	68.2	41.8
Total	99.7	96.6	94.5	95.6	88.6	87.0	80.6	67.3	76.7	72.5	57.0	44.7	72.8	54.2	27.2

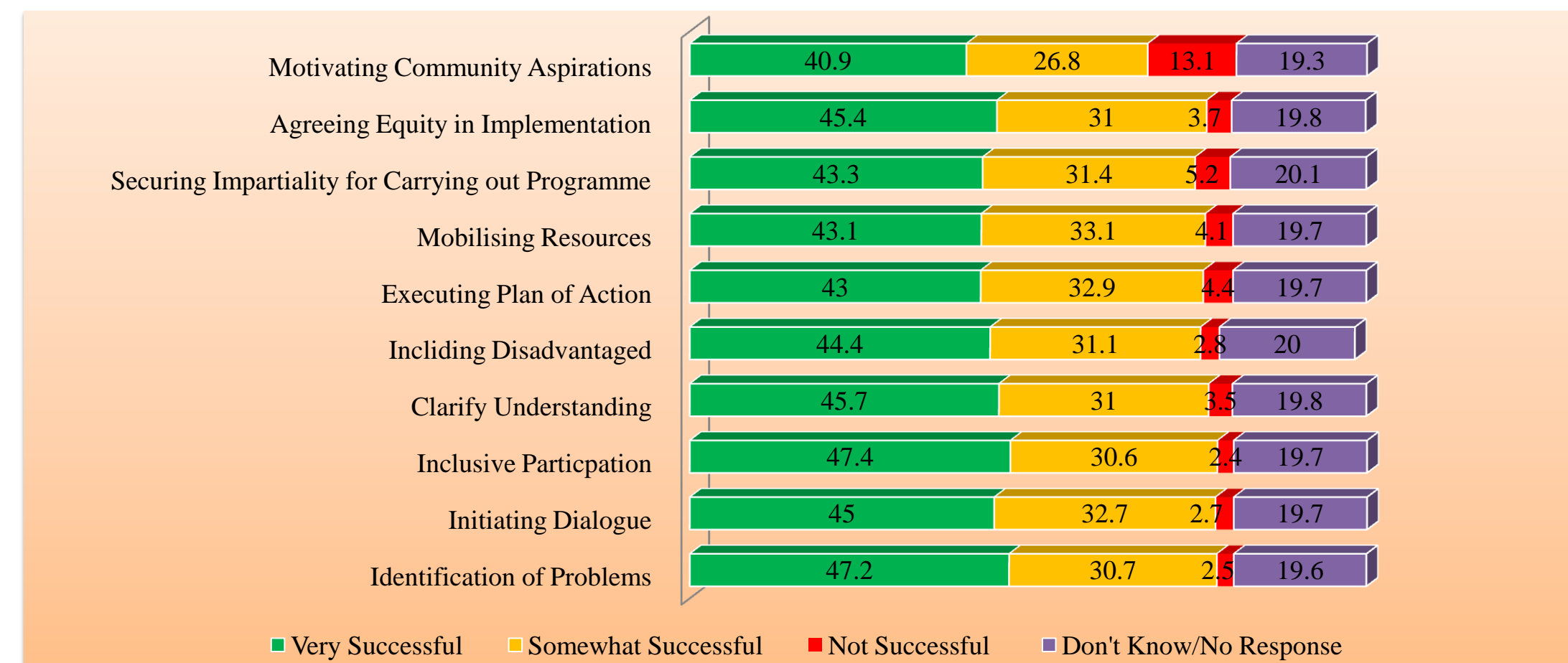
High Trust in Family, Friends and Neighbours



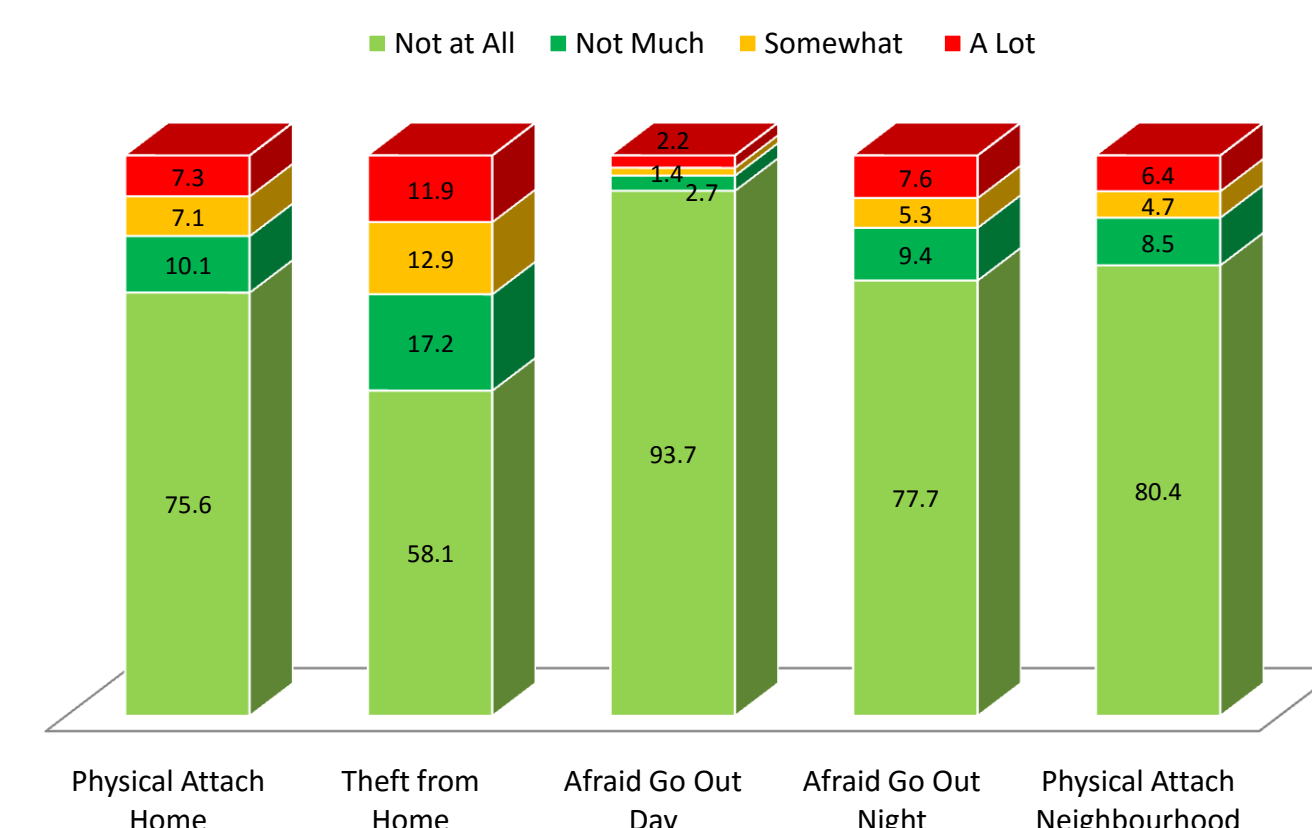
General Satisfaction with Life on a 10 Point Scale



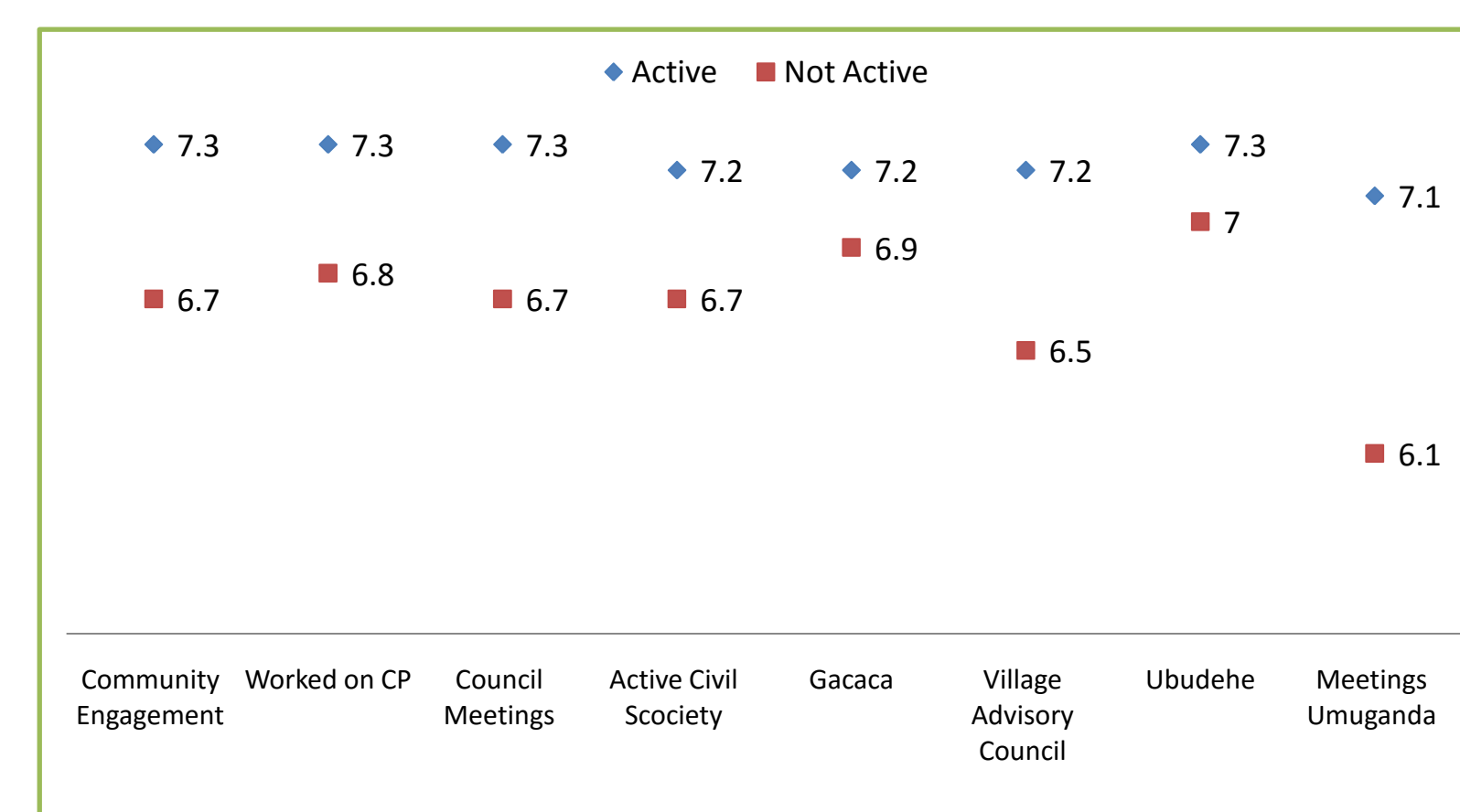
Perception of Effectiveness of Meetings after Umuganda in Dealing with Community Issues



Fear of Crime % of Respondents



Sample Means for Active and Non-Active Participation in Community Activities and Groups on Trust Scale





This work is licensed under a
Creative Commons
Attribution – NonCommercial - NoDerivs 4.0 License.

To view a copy of the license please see:
<http://creativecommons.org/licenses/by-nc-nd/4.0/>

This is a download from the BLDS Digital Library on OpenDocs
<http://opendocs.ids.ac.uk/opendocs/>