

# IDS at a critical juncture in international development

Since 1966, IDS has led path-breaking work in generating research and evidence together with partners across the research process and across regions, sectors and movements. We describe this approach in our most recent strategy (2015–20) as

“The Institute has played critical roles in pushing progress in gender and sexuality over 40 years.”

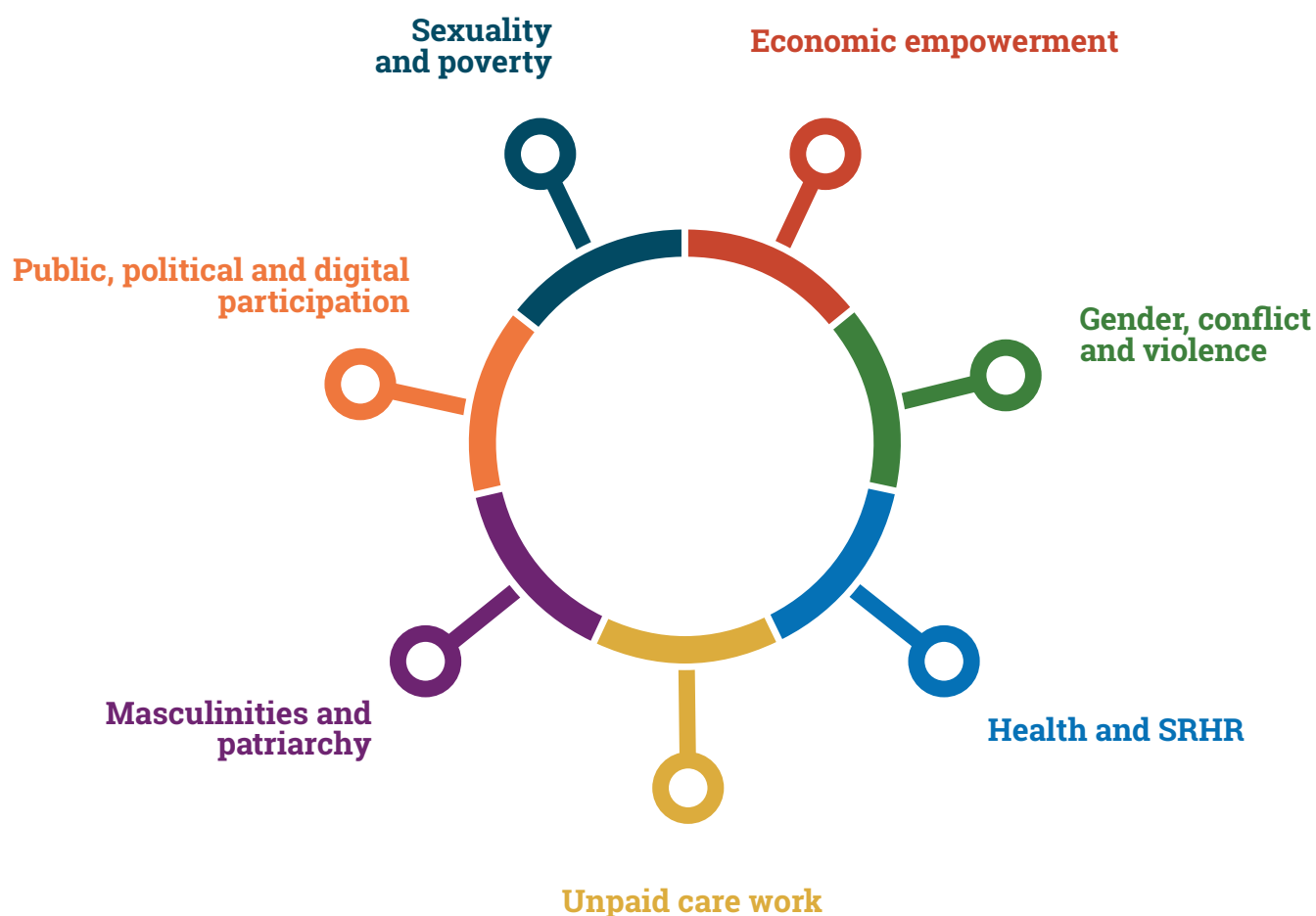
‘engaged excellence’. There has been a strong focus on human rights, gender equality, democratic development and citizen participation. The Institute has played critical roles in convening debates and pushing progress in gender and sexuality over the past 40 years: from influencing the shift from ‘women in development’ (WID) to ‘gender and development’ (GAD); getting sexuality, pleasure and poverty into the development discourse; politicising the field of integrating men and masculinities into

gender and development; introducing a gender relations approach to environmental change; and getting the issue of undervalued ‘care work’ onto the agenda (Nesbitt-Ahmed and Edwards 2016; Leach 2016; UN Women 2014b).

Building on a long track record of projects and research programmes, the Gender and Sexuality research cluster at IDS comprises an interdisciplinary group of experts, including anthropologists, economists, social scientists and political scientists, as well as digital media, policy and communications specialists. The group possesses strong qualitative and quantitative skills in academic, operational and action research, online platform development, policy engagement, organisational training and postgraduate teaching. Across the cluster, members are proficient in more than 13 languages and work in more than 30 countries across the world.<sup>2</sup>



◀ IDS 50th Conference panel on ‘Revolutions, Ruptures and Reframings: Gender and Sexuality’ with panellists (left to right) Diane Elson, Veena O’Sullivan, Bafana Khumalo and Wanja Muguongo, with co-chairs Deepta Chopra and Jerker Edström.



▲ Current and recent work by the Gender and Sexuality cluster.

Examples of IDS projects and research programmes include: **Pathways of Women’s Empowerment**, **Gender, Power and Sexuality** and the **Sexuality and Development programme**. More recent flagship programmes include the **Empowerment of Women and Girls programme**, **Balancing Unpaid Care Work and Paid Work** (part of the **Growth and Equal Opportunities for Women (GrOW)** programme), **Engendering Men: Evidence on Routes to Gender Equality (EMERGE)**, *Innovations from the Field – Gender Mainstreaming from the Ground Up* (Gender Hub Nigeria), the **Domestic Violence in Ghana** study, the **Sexuality, Poverty and Law programme**, and **Modern Slavery in India and Nepal** (with IDS’ Participation cluster). More examples of our current and recent work at IDS can be found on our Interactions site at <http://interactions.ids.ac.uk>